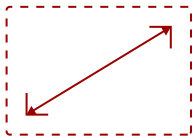


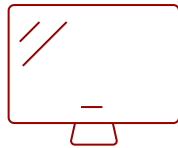
CDE7520-W - 75" DISPLAY, 3840 X 2160 RESOLUTION, 450 CD/M2 BRIGHTNESS

Key Features

- Ultra HD Resolution
- Powerful All-in-One SoC Platform
- Free ViewBoard® Cast Content Sharing Software
- Integrated Content Management System
- AV Control System Certified



75
DISPLAY



IPS
PANEL



RESOLUTION



Product Description

The ViewSonic® CDE7520-W is a 75" premium 4K large format presentation display. With features including a razor-sharp resolution of 3840 x 2160, 450-nit high brightness, 178-degree ultra-wide viewing angles, 2 x 16W speakers, and wireless screen sharing, the CDE7520-W transforms meeting rooms into a dynamic communications hub. The built-in ViewBoard® screen sharing software*, ViewBoard® Cast (along with the optional ViewSonic® vCastSender app), enables both on-site and online users to participate in conferences and simultaneously share content. Equipped with twin dual-core processors, 3GB RAM, and 16GB of internal memory, the CDE7520-W can play multimedia from internal storage or a USB flash drive. And with remote configuration and content management system support, the ViewSonic® CDE7520-W is also suitable for a wide array of diverse signage applications.

*Chrome, Android, Windows, Mac OS, and iOS compliant

Specifications

More Information

UPC	766907004199
Media Player Type	Yes
GPU	Dual-core MaliG51 MP2
CPU	2 Dual-core Processors - Cortex A73 + A53 1.4GHz
Memory	3GB DDR4
Storage	16GB eMMC
Internal Speakers	16W (x2)

HDMI 2.0 In (With CEC, HDCP 2.2)	2
VGA	1
DisplayPort	1
3.5mm Audio Out	1
SPDIF Audio Out	1
USB 3.0	1
USB 2.0	2
Slot-in PC Slot	1
RS232	1
Ethernet LAN (RJ45)	1
WIFI Module Slot	1
Voltage	100-240 VAC +/- 10% Wide Range, 50-60Hz +/-3 Hz
Consumption (max)	300W
Consumption (typical)	240W
Stand-by	<0.5W
Temperature	32-104° F (0 - 40° C)
Humidity (non-condensing)	10-80%
Net Without Stand (lbs)	64.6
Gross (lbs)	91.9
Net Without Stand (kg)	29.3
Gross (kg)	41.7
Packaging (in.)	71.97 x 43.23 x 8.66
Physical (in.)	65.83 x 37.59 x 2.76
Packaging (mm)	1828.0 x 1098.0 x 220.0
Physical (mm)	1672.0 x 955.0 x 70.0
VESA Compatible	400 x 200 mm
Screw Size	M8
AV Control	AMX Certified, Crestron Certified (Version 1.0), Extron Certified
Warranty	3-year limited warranty on parts, labor and backlight, onsite warranty
Recycle/Disposal	Please dispose of in accordance with local, state or federal laws.
Package Contents	CDE7520-W, Remote control with batteries, Quick Start Guide, Power cable (1.5m), HDMI Cable (3m), Wall Mount Screws and RS232 Adapter
Regulations	cTUVus, FCC, Energy Star, RoHS, Mexico CoC, Mexico Energy
Screen Size	75
Viewable Area (in.)	75
Light Source	DLED


Display Resolution	3840 x 2160
Panel Type	IPS
Static Contrast Ratio	1,200:1
Backlight Life (Hours)	50,000
Brightness	450 cd/m2
Response Time (Typical GTG)	8ms
Viewing Angles	178° horizontal, 178° vertical

UPC: 766907004199



Contact Sales

ViewSonic.com

888.881.8781 

email: salesinfo@viewsonic.com 