

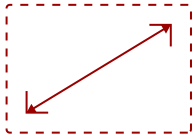
IFP6550-2-S

## Key Features

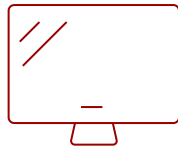
---

### REFURBISHED

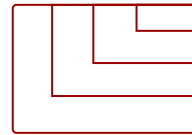
- Enhanced Touchscreen Performance
- Immersive Stereo Sound
- myViewBoard™ Annotation Software
- ViewBoard Cast Content Sharing Software
- SmartPort USB™
- 4K UHD Resolution



65  
DISPLAY



PANEL



RESOLUTION



## Product Description

---

Featuring 4K Ultra HD resolution and an advanced, next-generation touchscreen, the ViewSonic® ViewBoard® IFP6550 delivers incredible collaborative capabilities for 21st century boardrooms and classrooms. With integrated myViewBoard® annotation software and ViewBoard Cast streaming software, content creation and sharing has never been easier. What's more, this ENERGY STAR certified display delivers optional slot-in PC capability for more computing-intensive interactive applications. A VESA-compatible design allows for installation on a wall mount, or on an optional trolley cart for more flexible installation in classrooms and meeting rooms.

For more detailed information on how ViewSonic ViewBoards can best be utilized in a school environment, see our [ViewBoard FAQs](#).

## Specifications

---

### More Information

<b>UPC</b>	766907004267
<b>OS</b>	ViewBoard OS (embedded Android 7)
<b>GPU</b>	ARM Mali450 Quad Core
<b>CPU</b>	ARM Dual Core Cortex A73
<b>CPU Processor Speed</b>	1.2GHz
<b>Memory</b>	2GB
<b>Storage</b>	16GB

<b>Built-in Software</b>	myViewBoard, Chromium browser, Zoom, ViewBoard Cast
<b>Internal Speakers</b>	10W (x2)
<b>Subwoofer</b>	15W (x1)
<b>HDMI 2.0 In</b>	3
<b>HDMI Out</b>	1
<b>VGA</b>	1
<b>Composite RCA</b>	1
<b>3.5mm Audio In</b>	1
<b>3.5mm Audio Out</b>	1
<b>SPDIF Audio Out</b>	1
<b>USB 3.0</b>	2
<b>USB 2.0</b>	4
<b>Slot-in PC Slot</b>	1
<b>USB B Touch Port</b>	2
<b>RS232</b>	1
<b>Ethernet LAN (RJ45)</b>	1
<b>WIFI Module Slot</b>	1
<b>Intel® OPS Slot In (80-pin)</b>	1
<b>Voltage</b>	100-240 VAC
<b>Consumption (max)</b>	350W
<b>Consumption (typical)</b>	104W
<b>Stand-by</b>	<.5W
<b>On Screen Display</b>	Input, Volume, Backlight, Audio, Screen, Display, Adjust
<b>Remote Control</b>	Volume, Channel, Source, Mute, Back, Input, Menu
<b>Temperature</b>	32-104° F (0 - 40° C)
<b>Humidity (non-condensing)</b>	10-90%
<b>Touch Technology</b>	Infrared
<b>Touch Points</b>	Windows: 20, Android: 20
<b>Tip Detection</b>	Dual tips, 3mm and 8mm
<b>Net (lbs)</b>	88.9
<b>Gross (lbs)</b>	102.6
<b>Net (kg)</b>	40
<b>Gross (kg)</b>	47
<b>Packaging (in.)</b>	65.7 x 39.8 x 8.8
<b>Physical (in.)</b>	58.6 x 35.3 x 3.5
<b>Packaging (mm)</b>	1669.0 x 1010.0 x 223.0

<b>Physical (mm)</b>	1488.0 x 897.0 x 90.0
<b>VESA Compatible</b>	600 x 400 mm
<b>Camera Mounting Bracket</b>	1
<b>Warranty</b>	*Refurbished. 30-day DOA policy for full refund, with a 90-day repair warranty on parts and labor.
<b>Recycle/Disposal</b>	Please dispose of in accordance with local, state or federal laws.
<b>Package Contents</b>	IFP6550 display, stylus pen x 2, power cable, HDMI cable, USB cable, AV cable, remote control with batteries, Camera plate, M8 screw x 8, Quick Start Guide
<b>Regulations</b>	cTUVus, FCC, ENERGY STAR, Mexico Energy, CE, CB, RoHS, ErP, WEEE
<b>Classification</b>	Refurbished
<b>Ethernet LAN</b>	(10/100/1000M) (Android 10/100, PC 10/100/1000)
<b>Screen Size</b>	65
<b>Viewable Area (in.)</b>	65
<b>Light Source</b>	LED
<b>Display Resolution</b>	3840 x 2160
<b>Aspect Ratio</b>	16:9
<b>Static Contrast Ratio</b>	1,200:1
<b>Backlight Life (Hours)</b>	50,000
<b>Brightness</b>	350 cd/m2
<b>Response Time (Typical GTG)</b>	8ms
<b>Viewing Angles</b>	178° horizontal, 178° vertical
<b>Panel Surface</b>	Anti-glare 7H tempered glass
<b>Operation Rating</b>	16/7

UPC: 766907004267



## Contact Sales

[ViewSonic.com](https://www.viewsonic.com)

888.881.8781

email: [salesinfo@viewsonic.com](mailto:salesinfo@viewsonic.com)