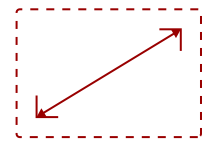


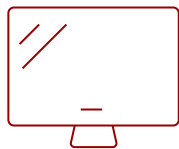
LS860WU - 5000 LUMENS WUXGA SHORT THROW LASER PROJECTOR WITH 1.3X OPTICAL ZOOM

Key Features

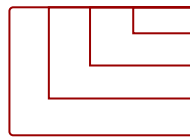
- Bright Images in Large Spaces
- Long-Lasting Laser Phosphor Light Source
- One-Wire HDBT® Input
- 360-Degree Orientation
- Portrait Mode Presentation
- Short Throw
- Software Updates Via Mini USB



60 - 200 in. / 1.5 - 5.1 m
DISPLAY



PANEL



1920 x 1200
RESOLUTION



Product Description

Bright and versatile for any professional installation, the ViewSonic® LS860WU WUXGA laser projector delivers everything you need for big screens in big venues. Delivering 5,000 lumens of advanced high brightness, 300,000:1 contrast ratio, and up to 20,000 hours* of light source life, this projector is ideal for auditoriums, lecture halls, large boardrooms, houses of worship, and more. Thanks to SuperColor™ technology, content is brought to life with captivating color, crisp graphics, and stunning videos no matter the environment. This top-notch performer is also easy to deploy and manage with its vertical/horizontal keystone, 4-corner adjustment, and a vertical/horizontal lens shift feature that provides extreme flexibility in even the most challenging installations. A short throw lens with a 0.8 throw ratio offers large projection images for smaller rooms. Thanks to the built-in HDBT receiver, the projector is capable of receiving uncompressed HD video and audio from over 200 feet away via network cable. Moreover, 360-degree tilt angle projection, portrait mode, and 24/7 operation allow for extreme mounting flexibility. The ViewSonic® LS860WU is the ideal WUXGA laser projector for professional installations, large venues, and business and education environments. *Light source life may vary based on actual usage and other factors.

Specifications

	More Information
UPC	766907003987
Light Source	DLP Laser
Display Resolution	WUXGA (1920x1200)
Display Resolution	1920 x 1200
Brightness (Lumens)	5,000 ANSI
Screen Size	60 - 200 in. / 1.5 - 5.1 m
Throw Distance	3.4 - 12.6 ft / 1.0 - 3.8 m
Throw Ratio	0.81-0.89
Keystone	Vertical (+/- 40°) / Horizontal (+/- 40°)
Lens	1.1x optical zoom
Light Source (watt)	Nichia 67W X 2
Light Source Life, Normal (hours)	20000
Light Source Life, Dynamic Eco-Mode (hours)	20000
Color Depth	1.07 Billion Colors
Dynamic Contrast Ratio	30,000,000:1
Aspect Ratio	16:10
Input Lag	37ms
Lens Shift	Verical: +/- 50%, Horizontal: +/- 23%
Operation Rating	24/7
Frequency Horizontal	15K-102KHz
Frequency Vertical	23-120Hz
PC Resolution (max)	1920 x 1200
PC Resolution (min)	640 x 480
Mac® Resolution (max)	1920 x 1200
Mac® Resolution (min)	640 x 480
USB 2.0 Type A	1
Ethernet LAN (RJ45)	1
3.5mm 12V Trigger	1
3.5mm Audio Out	1
3.5mm Audio In	1
Control (RS232)	1
HDMI 1.4 (with HDCP 1.4)	2
VGA In	1

VGA Out	1
Composite RCA Video In	1
S-Video In	1
RCA Audio In (L/R)	1
3D VESA	1
HDBT	1
Internal Speakers	10W (x2)
Stand-by	<0.5W
On Screen Display	Display, Image, Power Management, Basic, Advanced, System, Information (See user guide for full OSD functionality)
Temperature	32-104° F (0 - 40° C)
Humidity (non-condensing)	0-90%
Kensington Lock Slot	1
Net (lbs)	14.6
Gross (lbs)	20.1
Net (kg)	6.6
Gross (kg)	9.1
Packaging (in.)	20.3 x 19.3 x 10.9
Physical (in.)	15.9 x 12.0 x 5.7
Packaging (mm)	515.0 x 490.0 x 276.0
Physical (mm)	405.0 x 305.0 x 145.0
Regulations	FCC, cTUVus, ROHS
Package Contents	LS860WU projector, power cable, VGA cable, remote control, Quick Start Guide
Warranty	Five-year limited warranty on parts and labor, 1st year free Express Exchange® service. (One year Express Exchange Service requires product registration).
Recycle/Disposal	Please dispose of in accordance with local, state or federal laws.

UPC: 766907003987

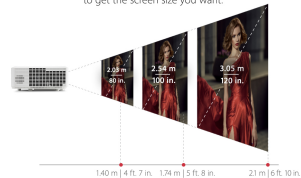


**BIG SCREEN PROJECTION
FOR BIG VENUES**



Projection Distance and Size

Where to place your projector to get the screen size you want.



Projection Distance (ft.)

*Based on throw ratio of 0.81-0.89

**Can project up to 508in | 200in.

5000 LUMENS and WUXGA RESOLUTION



Contact Sales

ViewSonic.com

888.881.8781

email:

salesinfo@viewsonic.com