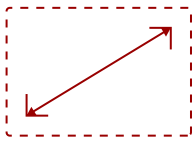


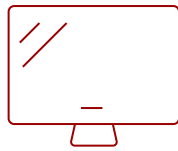
VS2210-H - 22" 1080P IPS MONITOR WITH HDMI

Key Features

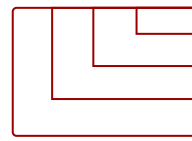
- Full HD 1080p Resolution
 - Enhanced Viewing Comfort
 - The Power of HDMI
 - Optimized View Settings
-



22
DISPLAY



IPS
PANEL



1920 x 1080
RESOLUTION



Product Description

The ViewSonic VS2210-h is a 22" (21.5" viewable) widescreen monitor with a LED backlight, and thin-bezel design ideal for use in the home or at the office. With Full HD 1920x1080 resolution and a 50M:1 MEGA Dynamic Contrast Ratio, the VS2210-h delivers stunning brightness and contrast, while a quick 5ms response time ensures crisp pictures and smooth playback. VGA and HDMI inputs provide flexible and convenient connectivity, while a VESA-compatible mount offers additional flexibility. With an efficient LED backlight and energy-saving Eco-mode, the VS2210-h is an environmentally friendly display choice.

Specifications

More Information

UPC	766907005165
Screen Size	22
Viewable Area (in.)	21.5
Panel Type	IPS
Display Resolution	1920 x 1080
Display Resolution	Full HD (1920x1080)
Static Contrast Ratio	1,000:1
Dynamic Contrast Ratio	50,000,000:1
Light Source	LED
Brightness	250 cd/m2
Colors	16.7M

Color Space Support	8 bit (6 bit + FRC)
Aspect Ratio	16:9
Response Time (Typical GTG)	14ms
Response Time (GTG w/OD)	5ms
Viewing Angles	178° horizontal, 178° vertical
Backlight Life (Hours)	30,000
Panel Surface	Anti-glare, Hard coating (3H)
PC Resolution (max)	1920 x 1080
Mac® Resolution (max)	1920 x 1080
3.5mm Audio Out	1
VGA	1
HDMI 1.4 In	1
Eco Mode (Conserve)	12W
Eco Mode (optimized)	15W
Consumption (typical)	19W
Consumption (max)	22W
Voltage	AC 100-240V (universal), 50-60Hz
Stand-by	0.5W
Power Supply	Internal
Cable Organization	No
Kensington Lock Slot	1
Physical Controls	Key Buttons 1, 2, 3, 4, 5 (Power)
On Screen Display	Auto Image Adjust, Contrast/Brightness, Input Select, Audio Adjust, Color Adjust, Information, Manual Image Adjust, Advanced Image Adjust, Setup Menu, Memory Recall (See user guide for complete OSD functionality)
Temperature	32-104° F (0 - 40° C)
Humidity (non-condensing)	20-90%
VESA Compatible	100 x 100 mm
Frequency Horizontal	24 ~ 82 KHz
Frequency Vertical	50 ~ 75 Hz
Digital Sync	TMDS
Tilt (Forward/Back)	5° / 20°
Regulations	cTUVus, FCC-B, ICES003, CEC
Net (lbs)	6.2
Net Without Stand (lbs)	5.5
Gross (lbs)	8.6
Net (kg)	2.8


Net Without Stand (kg)	2.5
Gross (kg)	3.9
Packaging (in.)	22.0 x 15.0 x 5.1
Physical (in.)	19.7 x 14.4 x 7.3
Physical Without Stand (in.)	19.7 x 11.9 x 1.9
Packaging (mm)	560.0 x 380.0 x 130.0
Physical (mm)	500.0 x 366.0 x 185.0
Physical Without Stand (mm)	500.0 x 302.0 x 47.0
Package Contents	VS2210-h, Power Cable, VGA Cable, Quick Start Guide
Recycle/Disposal	Please dispose of in accordance with local, state or federal laws.
Classification	Discontinued

UPC: 766907005165



Contact Sales

ViewSonic.com

888.881.8781 

email: salesinfo@viewsonic.com 