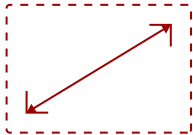
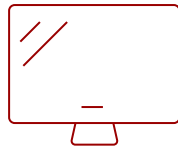


M1+-S

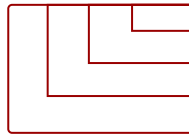
Key Features



24 - 100 in. / 0.6 - 2.54 m
DISPLAY



PANEL



1920 x 1080
RESOLUTION



Product Description

The ViewSonic® M1+ is an ultra-portable WVGA LED projector that delivers convenient entertainment in nearly any room. With a built-in battery and over 30,000 hours of operational life, this projector will deliver years of multimedia entertainment wherever it goes. Weighing less than two pounds, the M1+'s compact and lightweight design makes it ideal for moving from room to room, or for indoor/outdoor usage. An integrated smart stand provides for simple 360-degree setup, while also doubling as a lens cover. Once the lens is uncovered, the projector automatically powers on with full brightness for instant entertainment. The lens also includes a safety auto-off feature that powers down the projector when objects are detected too close to the lens. Dual Harman Kardon Bluetooth speakers provide crisp and clear sound for multimedia content, while a short throw lens can display large images in small spaces. Versatile connectivity options include a MicroSD card slot, USB Type-A and USB Type-C. What's more, integrated smart Wi-Fi connectivity lets you stream and binge from your favorite content providers like YouTube - making the M1+ a great option for sharing and displaying videos and other multimedia content.

Specifications

UPC	766907004168
Light Source	LED
Display Resolution	WVGA (854x480)
Display Resolution	854 x 480
Brightness (Lumens)	300 LED
Screen Size	24 - 100 in. / 0.6 - 2.54 m
Throw Distance	40 in / 1.0 m
Throw Ratio	1.2
Keystone	Vertical (+/- 40°)
Lens	Fixed Zoom
Light Source (watt)	10
Light Source Life, Normal (hours)	30000
Light Source Life, Dynamic Eco-Mode (hours)	30000
Color Depth	1.07B Color (R/G/B 10bit)
Dynamic Contrast Ratio	120,000:1
Aspect Ratio	16:9
Input Lag	37ms
Frequency Horizontal	15h~135kHz
Frequency Vertical	23~120Hz
PC Resolution (max)	1920 x 1080
PC Resolution (min)	640 x 480
Mac® Resolution (max)	1920 x 1080
Mac® Resolution (min)	640 x 480
USB 2.0 Type A	1
USB 3.1 Type C	1
Card Reader	Micro SD
3.5mm Audio Out	1
HDMI 1.4 In	1
Internal Speakers	3W (x2)
Voltage	100-240 VAC
Consumption (typical)	55W
Stand-by	<0.5W
Physical Controls	Power, keystone/arrow keys, left/blank, menu/exit, right/panel key lock, mode/enter, auto, source
On Screen Display	Display, Image, Power Management, Basic, Advanced, System, Information (See user guide for full OSD functionality)
Temperature	32-104° F (0 - 40° C)

Humidity (non-condensing)	0-90%
Net (lbs)	1.7
Gross (lbs)	3.7
Net (kg)	0.8
Gross (kg)	1.7
Packaging (in.)	16.0 x 9.2 x 15.0
Physical (in.)	5.7 x 1.6 x 5.0
Packaging (mm)	406.0 x 233.0 x 380.0
Physical (mm)	146.0 x 40.0 x 126.0
Regulations	FCC, cTUVus, ROHS, TUV-S, NOM, UL2054
Package Contents	M1+ projector, power cable, USB-C cable, remote control, Quick Start Guide
Warranty	*Refurbished. 30-day DOA policy for full refund, with a 90-day repair warranty on parts and labor.
Recycle/Disposal	Please dispose of in accordance with local, state or federal laws.
Battery Chemistry	Lithium-ion
Classification	Refurbished

UPC: 766907004168



Contact Sales
ViewSonic.com
 888.881.8781 📞
 email:
salesinfo@viewsonic.com