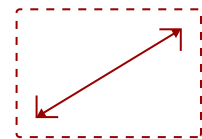


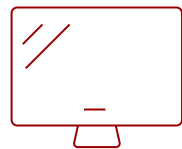
PG701WU - 3500 LUMENS WUXGA PROJECTOR WITH LOW INPUT LAG AND VERTICAL KEYSTONE

Key Features

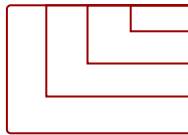
- High brightness 3500 Lumens WUXGA projector with advanced visual features
- 1.1x optical zoom, 40 degree vertical keystone for flexible setup
- A low 16ms input latency provides faster frame-by-frame action for smooth images without delay
- SuperEco Mode allows the lamp to shine bright for up to 20,000 hours
- Supports most media players, PCs, Macs, and mobile devices with inputs such as HDMI, USB



30 - 300 in. / 0.76 - 7.62 m
DISPLAY



PANEL



1920 x 1200
RESOLUTION

Flexible connectivity for your favorite devices.



1.1x Optical zoom lens



x2 HDMI 1.4 (HDCP 1.4)
x2 VGA (In/Out)
x1 USB 2.0 Type A
x1 Ethernet Lan (RJ45)
x1 S-Video In
x2 3.5mm Audio In/Out
x1 RS232 In
x1 Kensington Lock Slot

Product Description

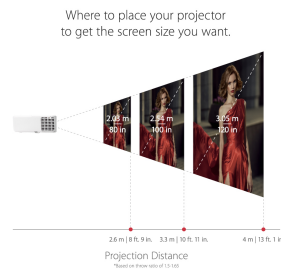
The ViewSonic® PG701WU WUXGA projector features 3,500 lumens, 1920x1200 native resolution, an intuitive, user-friendly design, and a sleek white chassis. Exclusive SuperColor™ technology offers a wide color gamut for beautiful image production in nearly any environment. With vertical keystone correction, and extensive connectivity options, the PG701WU provides flexible and quick set-up. What's more, an energy-saving SuperEco™ feature reduces power consumption and extends the lamp life by up to 20,000 hours. The PG701WU is the ideal projector for both high-definition presentations and vibrant multimedia entertainment.

Specifications

UPC	766907001747
Light Source	DLP Lamp
Display Resolution	WUXGA (1920x1200)
Display Resolution	1920 x 1200
Brightness (Lumens)	3,500 ANSI
Screen Size	30 - 300 in. / 0.76 - 7.62 m
Throw Distance	3.3 - 36.0 ft / 1.0 m - 11.0 m
Throw Ratio	1.5-1.65
Keystone	Vertical (+/- 40°)
Lens	1.1x optical zoom
Light Source (watt)	203
Light Source Life, Normal (hours)	5000
Light Source Life, Dynamic Eco-Mode (hours)	20000
Color Depth	1.07B Color (R/G/B 10bit)
Aspect Ratio	16:10
Input Lag	37ms
Frequency Horizontal	15K~102KHz
Frequency Vertical	23~120Hz
PC Resolution (max)	1920 x 1200
PC Resolution (min)	640 x 480
Mac® Resolution (max)	1920 x 1200
Mac® Resolution (min)	640 x 480
USB 2.0 Type A	1
3.5mm Audio Out	1
3.5mm Audio In	1
Control (RS232)	1
HDMI 1.4 In	1
HDMI 1.4 (with HDCP 1.4)	1
Internal Speakers	2W (x1)
Consumption (typical)	300W
Stand-by	<0.5W
Physical Controls	Power, keystone/arrow keys, left/blank, menu/exit, right/panel key lock, mode/enter, auto, source
On Screen Display	Display, Image, Power Management, Basic, Advanced, System, Information (See user guide for full OSD functionality)
Temperature	32-104° F (0 - 40° C)
Humidity (non-condensing)	0-90%

Kensington Lock Slot	1
Net (lbs)	5.7
Gross (lbs)	8.2
Net (kg)	2.6
Gross (kg)	3.7
Packaging (in.)	16.3 x 6.6 x 11.7
Physical (in.)	12.3 x 8.7 x 4.3
Packaging (mm)	415.0 x 168.0 x 297.0
Physical (mm)	312.0 x 222.0 x 108.0
Regulations	FCC, cTUVus, ROHS
Package Contents	PG701WU projector, Power Cable, VGA Cable, Remote Control, Quick Start Guide
Warranty	Three-year limited warranty on parts and labor, 1-year limited warranty on lamp, 1st year free Express Exchange® service. (One year Express Exchange Service requires product registration).
Recycle/Disposal	Please dispose of in accordance with local, state or federal laws.

UPC: 766907001747



Contact Sales
ViewSonic.com

888.881.8781
email:
salesinfo@viewsonic.com