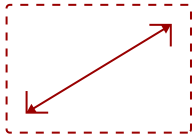


VG2448_H2-S

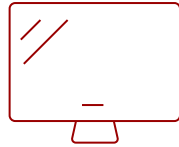
Key Features

REFURBISHED

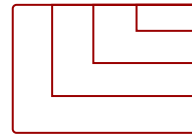
- SuperClear IPS Panel Technology
- Two Monitors in a Single Package
- Seamless Viewing Experience
- Environmentally Friendly Packaging
- Loaded with Connectivity



24
DISPLAY



IPS
PANEL



1920x1080
RESOLUTION



Product Description

Designed for the modern day office, the ViewSonic® VG2448_H2 dual monitor pack delivers an efficient end-to-end enterprise experience. From easy installation, to recycling, to long-term reliability, this dual monitor solution reduces the total cost of ownership beyond the initial purchase price. Sold as a dual pack of monitors without monitor stands, the VG2448_H2 ships in biodegradable packaging to minimize recycling costs and waste.

Standard VESA-compatible mounting offers easy dual-screen installation. SuperClear® IPS panel technology delivers wide-angle viewing and incredibly vivid colors. A variety of input options include VGA, HDMI, DisplayPort and USB 3.0 to deliver both legacy and future-proof connectivity.

Specifications

More Information

UPC	766907002935
Screen Size	24
Viewable Area (in.)	23.8
Panel Type	IPS
Display Resolution	1920 x 1080
Display Resolution	Full HD (1920x1080)
Static Contrast Ratio	1,000:1
Dynamic Contrast Ratio	50,000,000:1
Light Source	WLED

Brightness	250 cd/m2
Colors	16.7M
Color Space Support	6 bits
Aspect Ratio	16:9
Response Time (Typical GTG)	14ms
Response Time (GTG w/OD)	5ms
Viewing Angles	178° horizontal, 178° vertical
Backlight Life (Hours)	30,000
Panel Surface	Anti-glare, Hard coating 3H
PC Resolution (max)	1920x1080
Mac® Resolution (max)	1920x1080
USB 3.0 Type A	4
USB 3.0 Type B	1
VGA	1
HDMI 1.4 In	1
DisplayPort	1
Internal Speakers	2W (x2)
Eco Mode (Conserve)	14.6W
Eco Mode (optimized)	17.4W
Consumption (typical)	25W
Consumption (max)	57W
Voltage	AC 100-240V (universal), 50-60Hz
Stand-by	0.5W
Power Supply	Internal
Cable Organization	No
Kensington Lock Slot	1
Physical Controls	1,2,3,4,5, Power
On Screen Display	Auto Image Adjust, Contrast/Brightness, Input Select, Audio Adjust, Color Adjust, Information, Manual Image Adjust, Advanced Image Adjust, Setup Menu, Memory Recall (See user guide for complete OSD functionality)
Temperature	32-104° F (0 - 40° C)
Humidity (non-condensing)	20-90%
VESA Compatible	100 x 100 mm
Frequency Horizontal	24 ~ 82KHz
Frequency Vertical	50 ~ 75Hz
Digital Sync	TMDS for HDMI (v1.4), PCI-E for DisplayPort (v1.2)
Net (lbs)	15.2

Gross (lbs)	21.8
Net (kg)	6.9
Gross (kg)	9.9
Packaging (in.)	26.0 x 16.4 x 9.8
Physical Without Stand (in.)	21.7 x 12.8 x 2.0
Packaging (mm)	660.0 x 417.0 x 250.0
Physical Without Stand (mm)	549.4 x 325.6 x 50.0
Regulations	cTUVus, FCC-B, ICES003, Energy Star, EPEAT, MX-CoC, Mexico Energy
Package Contents	LCD Display x2, Power Cable x2, DP to DP Cable x1, HDMI Cable x1, USB3.0 Upstream Cable x2, Quick Start Guide x1
Recycle/Disposal	Please dispose of in accordance with local, state or federal laws.
Warranty	*Refurbished. 30-day DOA policy for full refund, with a 90-day repair warranty on parts and labor.
Classification	Refurbished

UPC: 766907002935



Contact Sales

ViewSonic.com

888.881.8781

email: salesinfo@viewsonic.com