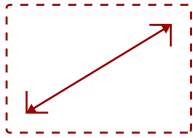


VA2456-MHD_H2-S

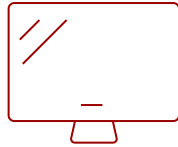
Key Features

REFURBISHED

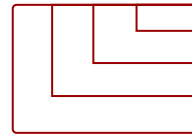
- Two Monitors in a Single Package
- SuperClear IPS Panel Technology
- Environmentally Friendly Packaging
- Frameless design
- Versatile Connectivity
- Full HD 1080p Resolution



24
DISPLAY



IPS
PANEL



1920x1080
RESOLUTION



Product Description

The ViewSonic® VA2456-mhd_H2 dual monitor pack delivers an efficient end-to-end enterprise experience. From easy installation, to recycling, to long-term reliability, this dual monitor solution reduces the total cost of ownership beyond the initial purchase price. Sold as a dual pack of monitors without monitor stands, the VA2456-mhd_H2 ships in biodegradable packaging to minimize recycling costs and waste. Standard VESA-compatible mounting offers easy dual-screen installation, while a 3-sided thin bezel design provides a seamless viewing experience for multi-monitor setups. SuperClear® IPS panel technology delivers wide-angle viewing and incredibly vivid colors. Extensive connectivity options include VGA, HDMI, and DisplayPort so that you can connect to a variety of HD and analog devices – today and tomorrow.

Specifications

More Information

UPC	766907002768
Screen Size	24
Viewable Area (in.)	23.8
Panel Type	IPS
Display Resolution	1920 x 1080
Display Resolution	Full HD (1920x1080)
Static Contrast Ratio	1,000:1
Dynamic Contrast Ratio	50,000,000:1

Light Source	LED
Brightness	250 cd/m2
Colors	16.7M
Color Space Support	8-Bit
Aspect Ratio	16:9
Response Time (Typical GTG)	14ms
Response Time (GTG w/OD)	5ms
Viewing Angles	178° horizontal, 178° vertical
Backlight Life (Hours)	30,000
Panel Surface	Anti-glare, Hard coating (3H)
PC Resolution (max)	1920x1080
Mac® Resolution (max)	1920x1080
3.5mm Audio In	1
3.5mm Audio Out	1
VGA	1
HDMI 1.4 In	1
DisplayPort	1
Internal Speakers	2W (x2)
Eco Mode (Conserve)	14W
Eco Mode (optimized)	18W
Consumption (typical)	22W
Consumption (max)	31W
Voltage	AC 100-240V (universal), 50-60Hz
Stand-by	0.5W
Power Supply	Internal
Cable Organization	No
Kensington Lock Slot	1
Physical Controls	Key Buttons 1, 2, 3, 4, 5, 6 (Power)
On Screen Display	Auto Image Adjust, Contrast/Brightness, Input Select, Audio Adjust, Color Adjust, Information, Manual Image Adjust, Advanced Image Adjust, Setup Menu, Memory Recall (See user guide for complete OSD functionality)
Temperature	32-104° F (0 - 40° C)
Humidity (non-condensing)	20-90%
VESA Compatible	100 x 100 mm
Frequency Horizontal	HDMI: 15 ~ 83KHz, DisplayPort: 24 ~ 83KHz
Frequency Vertical	HDMI: 50 ~ 75Hz, DisplayPort: 50 ~ 75Hz
Digital Sync	TMDS for HDMI, PCI-E for DisplayPort

Net (lbs)	15.4
Gross (lbs)	22.7
Net (kg)	7.0
Gross (kg)	10.3
Packaging (in.)	24.1 x 16.3 x 7.8
Physical (in.)	21.3 x 12.8 x 1.9
Packaging (mm)	611.0 x 414.0 x 199.0
Physical (mm)	539.8 x 324.6 x 49.3
Regulations	cULus, FCC-B, ICES003, Energy Star 7.0, EPEAT, Mexico Energy, MX-CoC
Package Contents	2X LCD Displays, 2x Power Cable, 1x HDMI Cable, 1 x Display Port Cable, 2x Audio Cable, 2x Quick Start Guide
Recycle/Disposal	Please dispose of in accordance with local, state or federal laws.
Warranty	*Refurbished. 30-day DOA policy for full refund, with a 90-day repair warranty on parts and labor.
Classification	Refurbished

UPC: 766907002768



Contact Sales

ViewSonic.com

888.881.8781

email: salesinfo@viewsonic.com