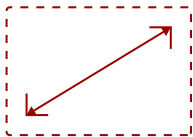


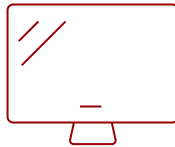
LS850WU - 5000 LUMENS WUXGA NETWORKABLE LASER PROJECTOR WITH 1.6X OPTICAL ZOOM

Key Features

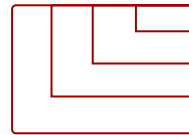
- Bright Images in Large Spaces
- Long-Lasting Laser Phosphor Light Source
- One-Wire HDBT® Input
- 360-Degree Orientation
- Portrait Mode Projection
- Peace of Mind



30 - 300 in. / 0.76 - 7.62 m
DISPLAY



PANEL



1920 x 1200
RESOLUTION



Product Description

Bright and versatile for any professional installation, the ViewSonic® LS850WU WUXGA laser projector delivers everything you need for big screens in big venues. Delivering 5,000 lumens of advanced high brightness, 300,000:1 contrast ratio, and up to 20,000 hours* of light source life, this projector is ideal for auditoriums, lecture halls, large boardrooms, houses of worship, and more. Thanks to SuperColor™ technology, content is brought to life with captivating color, crisp graphics, and stunning videos no matter the environment. This top-notch performer is also easy to deploy and manage with its wide 1.6x optical zoom adjustment, vertical/horizontal keystone, 4 corner adjustment, and a vertical/horizontal lens shift feature that provide extreme flexibility in even the most challenging installations. Thanks to the built-in HDBT receiver, the projector is capable of receiving uncompressed HD video and audio from over 200 feet away via network cable. Moreover, 360-degree tilt angle projection, portrait mode, and 24/7 operation allow for extreme mounting flexibility. The ViewSonic® LS850WU is the ideal WUXGA laser projector for professional installations, large venues, and business and education environments. *Light source life may vary based on actual usage and other factors.

Specifications

	More Information
UPC	766907003055
Light Source	DLP Laser
Display Resolution	WUXGA (1920x1200)
Display Resolution	1920 x 1200
Brightness (Lumens)	5,000 ANSI
Screen Size	30 - 300 in. / 0.76 - 7.62 m

Throw Distance	2.9 - 46.2 ft / 0.9 - 14.1 m
Throw Ratio	1.36 - 2.18
Keystone	Vertical (+/- 40°) / Horizontal (+/- 40°)
Lens	1.6x Manual optical zoom / manual optical focus
Light Source (watt)	Nichia 67W X 2
Light Source Life, Normal (hours)	20000
Light Source Life, Dynamic Eco-Mode (hours)	20000
Color Depth	1.07B Color (R/G/B 10bit)
Dynamic Contrast Ratio	3,000,000:1
Aspect Ratio	16:10
Input Lag	37ms
Lens Shift	V (+50%, -50%); H (+23%, -23%)
Frequency Horizontal	15K-102KHz
Frequency Vertical	23-120Hz
PC Resolution (max)	1920 x 1200
PC Resolution (min)	640 x 480
Mac® Resolution (max)	1920 x 1200
Mac® Resolution (min)	640 x 480
USB 2.0 Type A	1
Ethernet LAN (RJ45)	1
3.5mm 12V Trigger	1
3.5mm Audio Out	1
3.5mm Audio In	1
Control (RS232)	1
HDMI 1.4 In	1
HDMI 1.4 (with HDCP 1.4)	1
VGA In	1
VGA Out	1
Composite RCA Video In	1
S-Video In	1
RCA Audio In (L/R)	1
3D VESA	1
Internal Speakers	10W (x2)
Consumption (typical)	430W
Stand-by	<0.5W

On Screen Display	Display, Image, Power Management, Basic, Advanced, System, Information (See user guide for full OSD functionality)
Temperature	32-104° F (0 - 40° C)
Humidity (non-condensing)	0-90%
Kensington Lock Slot	1
Net (lbs)	14.1
Net (kg)	6.4
Physical (in.)	15.9 x 5.7 x 12.0
Physical (mm)	403.9 x 144.8 x 304.8
Regulations	FCC, cTUVus, ROHS
Package Contents	LS850WU projector, power cable, VGA cable, remote control, Quick Start Guide
Warranty	Five-year limited warranty on parts and labor, 1st year free Express Exchange® service. (One year Express Exchange Service requires product registration).
Recycle/Disposal	Please dispose of in accordance with local, state or federal laws.

UPC: 766907003055



Contact Sales

ViewSonic.com

888.881.8781

email: salesinfo@viewsonic.com