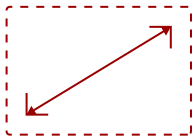
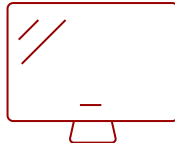


VX2458-MHD-S

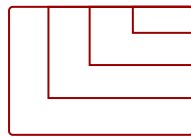
Key Features



24"
DISPLAY



TN
PANEL



1920x1080
RESOLUTION



Product Description

The ViewSonic® VX2458-mhd is a 24" (23.6" Viewable) Full HD price-performance monitor built for gaming and entertainment. With incredible image quality and 144hz refresh rate, this monitor is perfect for fast-moving multimedia like action-packed movies and high-speed games. AMD FreeSync™ technology virtually eliminates screen tearing and stuttering for fluid game play, while an ultra-fast 1ms response time and low input lag provides smooth blur-free screen performance. For a game winning competitive edge, a Game Mode hot key optimizes gameplay for FPS, RTS and MOBA. On top of that, a black stabilization function helps you target enemies lurking in the dark, while enabling the monitor to maintain brilliantly rich colors and contrast for total immersion. Flexible connectivity options such as DisplayPort and HDMI allow you to connect to your dedicated graphics card and gaming console. In addition, Flicker-Free technology and a Blue Light Filter help to minimize eyestrain from extended viewing periods. The VX2458-mhd is packed with all the features you need for multimedia entertainment.

Specifications

More Information

UPC

766907001877

Screen Size	24"
Viewable Area (in.)	23.6
Panel Type	TN
Display Resolution	1920 x 1080
Display Resolution	Full HD (1920x1080)
Static Contrast Ratio	1,000:1
Dynamic Contrast Ratio	80,000,000:1
Light Source	LED
Brightness	300 cd/m2
Colors	16.7M
Color Space Support	6 bits + FRC
Aspect Ratio	16:9
Response Time (Typical GTG)	5ms
Response Time (GTG w/OD)	1ms
Viewing Angles	170° horizontal, 160° vertical
Backlight Life (Hours)	30,000
Panel Surface	Anti-glare, Hard coating 3H
Refresh Rate	144Hz
PC Resolution (max)	1920x1080
Mac® Resolution (max)	1920x1080
3.5mm Audio Out	1
HDMI 1.4 In	2
DisplayPort	1
Internal Speakers	2W (x2)
Eco Mode (Conserve)	22W
Eco Mode (optimized)	28W
Consumption (typical)	40W
Consumption (max)	45W
Voltage	AC 100-240V (universal), 50-60Hz
Stand-by	0.5W
Power Supply	Internal
Cable Organization	No
Kensington Lock Slot	1
Physical Controls	Key Buttons 1, 2, 3, 4, 5, 6 (Power)
On Screen Display	Auto Image Adjust, Contrast/Brightness, Input Select, Audio Adjust, Color Adjust, Information, Manual Image Adjust, Advanced Image Adjust, Setup Menu, Memory Recall (See user guide for complete OSD functionality)

Temperature	32-104° F (0 - 40° C)
Humidity (non-condensing)	20-90%
VESA Compatible	100 x 100 mm
Frequency Horizontal	15 ~ 180KHz
Frequency Vertical	23 ~ 144Hz
Digital Sync	TMDS for HDMI, PCI-E for DisplayPort (v1.2)
Regulations	cULus, FCC-B, ICES003, Energy Star 7.0, EPEAT, Mexico Energy, MX-CoC
Net (lbs)	9.0
Net Without Stand (lbs)	8.0
Gross (lbs)	12.3
Net (kg)	4.1
Net Without Stand (kg)	3.6
Gross (kg)	5.6
Packaging (in.)	24.4 x 19.5 x 4.9
Physical (in.)	23.2 x 16.6 x 9.0
Physical Without Stand (in.)	23.2 x 13.9 x 1.8
Packaging (mm)	619.0 x 495.0 x 125.0
Physical (mm)	558.7 x 422.4 x 229.7
Physical Without Stand (mm)	558.7 x 352.6 x 45.5
Package Contents	VX2458-mhd Display, Power Cable x 1, HDMI Cable x 1, Quick Start Guide
Recycle/Disposal	Please dispose of in accordance with local, state or federal laws.
Warranty	*Refurbished. 30-day DOA policy for full refund, with a 90-day repair warranty on parts and labor.
Classification	Refurbished

UPC: 766907001877



Contact Sales
ViewSonic.com

888.881.8781
email:
salesinfo@viewsonic.com