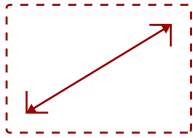


VSD243 - 24" DISPLAY, 250 CD/M2 BRIGHTNESS, INTEGRATED MEDIA PLAYER

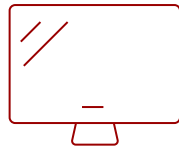
Key Features

REFURBISHED

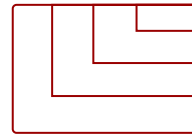
- Powerful Quad Core Processor
 - Android 8.1 Oreo OS
 - 10-Point Multi-Touch
 - Equipped With Wi-Fi, Bluetooth and RJ45
 - Versatile Connectivity
 - Optional Kiosk Stand
-



24
DISPLAY



PANEL



RESOLUTION

Product Description

The ViewSonic® VSD243 is a 24" (23.6" viewable) smart display with Full HD 1080p resolution, Quad-Core 1.8GHz processor, 10-point capacitive touch, and Android™ Oreo 8.1 OS. Versatile connectivity options include HDMI (In/Out), multiple USB ports, SD card reader, RJ45 Ethernet, Dual Band 2.4GHz/5GHz Wi-Fi, Bluetooth4.0, 5M pixel webcam with integrated microphone, and 2.5W speakers for video conferencing. With its sleek ID, thin bezel, fan-less design, 7H hardness screen coating, and VESA compatible mounting capabilities, the VSD243 is a flexible solution for information kiosks, public displays, or POS stations in business centers, libraries, or retail environments. The VSD243 can also be operated as a stand-alone PC replacement, or as a traditional 24" Full HD touch monitor via HDMI to your PC/Laptop. With a comprehensive set of enhanced features and functions, the VSD243 is perfect for a wide range of applications and commercial kiosk based solutions for business, restaurants, service counters, or retail environments.

Specifications

More Information

Energy Star Compliant

No

UPC

766907001297

CPU Processor Type

Rockchip® RK3288W Cortex-A17 Quad-Core

OS

8.1

Type

IPS

Static Contrast Ratio

3,000:1

Viewing Angles

178° horizontal, 178° vertical

Display Resolution	1920 x 1080
Viewable Area (in.)	23.6
Response Time (Typical GTG)	16ms
Light Source	LED
Brightness	250 cd/m2
Panel Surface	Anti-glare, Hard coating (3H)
Aspect Ratio	16:9
Display Resolution	Full HD (1920x1080)
Screen Size	24
Voltage	100-240 VAC
Consumption (max)	40W
Consumption (typical)	16W
Stand-by	<2W
Off	<0.5W
Temperature	32-95° F (0 - 35° C)
Humidity (non-condensing)	20-90%
Touch Technology	Capacitive
Touch Points	10-Point Touch
HDMI 1.4 In	1
HDMI 1.4 Out	1
3.5mm Mic In	1
3.5mm Audio Out	1
Mini USB	1
Ethernet LAN (RJ45)	1
USB 2.0 Type A	4
USB 2.0 Type B	1
SD Card Slot	1
DC Jack (12V/4A)	1
RAM	2GB
Memory Type	DDR3
Storage Capacity	16GB
Storage Type	eMMC
Wifi	802.11a/b/g/n/ac
Bluetooth	Bluetooth 4.0
Webcam	5MP
Microphone	Built In, Echo cancelling

Internal Speakers	2.5W (x2)
Net (kg)	5.6
Gross (kg)	7.6
Net (lbs)	12.4
Gross (lbs)	16.7
Packaging (mm)	643.0 x 435.0 x 140.0
Physical (mm)	572.9 x 351.8 x 47.0
Packaging (in.)	25.3 x 17.1 x 4.9
Physical (in.)	22.6 x 13.9 x 1.9
VESA Compatible	100 x 100 mm
Screw Size	M4
Screw Length (mm)	4
Package Contents	VSD243 smart display, power adapter and cord, Quick Start Guide
Recycle/Disposal	Please dispose of in accordance with local, state or federal laws.
Regulations	cTUVus, FCC-B(including ICES003), FCC-ID, CA IC
Warranty	Three-year limited warranty on parts, labor and backlight

UPC: 766907001297



Contact Sales

ViewSonic.com

888.881.8781

email: salesinfo@viewsonic.com