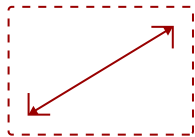
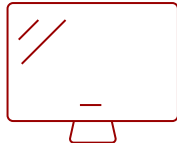


TD2210-S

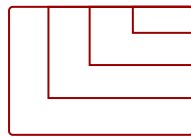
Key Features



22"
DISPLAY



TN
PANEL



1920 x 1080
RESOLUTION



Product Description

The TD2210 is a 22" (21.5" viewable) Full HD monitor with resistive touch technology. With a robust, pressure-sensing touchscreen that is resistant to screen contamination, the TD2210 is ideal for use in retail, POS, and commercial environments. Resistive touch technology on the TD2210 is also fully functional in gloved environments and compatible with styluses. Featuring stunning Full HD resolution and 20M:1 MEGA Dynamic Contrast Ratio, the TD2210 delivers extremely sharp and crisp images. Flexible connectivity options include VGA, DVI, and USB ports, and a VESA-mountable design offers additional convenience for use as a wall-mounted display. Industry-leading warranty protection and ViewSonic product quality makes this durable touch display a great long-term investment for a variety of environments.

Specifications

More Information

UPC	766907927719
Screen Size	22"

Viewable Area (in.)	21.5
Panel Type	TN
Display Resolution	1920 x 1080
Static Contrast Ratio	1,000:1
Dynamic Contrast Ratio	20M:1
Light Source	LED
Brightness	250 cd/m ²
Colors	16.7M
Aspect Ratio	16:9
Response Time (Typical GTG)	5ms
Viewing Angles	170° horizontal, 160° vertical
Backlight Life (Hours)	40,000
Panel Surface	3H Scratch Resistant Surface Hardness
PC Resolution (max)	1920 x 1080
USB 2.0 Type A	1
USB 2.0 Type B	1
VGA	1
DVI-I	1
Touch Technology	Resistive
Touch Points	1-Point Touch
Internal Speakers	2W (x2)
Eco Mode (Conserve)	11.5W
Eco Mode (optimized)	14W
Consumption (typical)	17.5W
Consumption (max)	29.5W
Voltage	AC 100-240V (universal), 50-60Hz
Stand-by	0.5W
Cable Organization	No
Kensington Lock Slot	1
Physical Controls	GameMode, 1, 2, 3, 4, Power
On Screen Display	Auto Image Adjust, Contrast/Brightness, Input Select, Audio Adjust, Color Adjust, Information, Manual Image Adjust, Advanced Image Adjust, Setup Menu, Memory Recall (See user guide for complete OSD functionality)
Temperature	32-104° F (0 - 40° C)
Humidity (non-condensing)	20-90%
VESA Compatible	100 x 100 mm
Frequency Horizontal	24 ~ 83KHz

Frequency Vertical	50 ~ 76Hz
Analog Sync	Separate Sync / Composite Sync / Sync on Green
Tilt (Forward/Back)	5° / 20°
Regulations	cULus, FCC-B, ICES003, Energy Star, EPEAT, UL-MX-CoC, Mexico Energy
Net (lbs)	10.5
Net Without Stand (lbs)	8.7
Gross (lbs)	14.4
Net (kg)	4.8
Net Without Stand (kg)	3.9
Gross (kg)	6.5
Packaging (in.)	22.4 x 16.8 x 8.4
Physical (in.)	20.1 x 14.3 x 9.5
Physical Without Stand (in.)	20.1 x 12.2 x 2.5
Packaging (mm)	570 x 427 x 214
Physical (mm)	512 x 364 x 240
Physical Without Stand (mm)	512 x 311 x 64
Package Contents	LCD Display, Power Cable, VGA Cable, DVI Cable, USB2.0 Cable, Audio Cable, Quick Start Guide, ViewSonic Wizard CD-ROM
Recycle/Disposal	Please dispose of in accordance with local, state or federal laws.
Warranty	*Refurbished. 30-day DOA policy for full refund, with a 90-day repair warranty on parts and labor.
Classification	Refurbished

UPC: 766907927719



Contact Sales

ViewSonic.com

888.881.8781

email:

salesinfo@viewsonic.com