



## VA2456-MHD - 24" 1080P IPS MONITOR WITH ADAPTIVE SYNC, HDMI, DISPLAYPORT, AND VGA

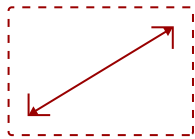
### Key Features

---

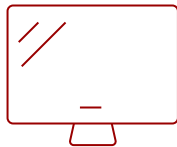
- 24 Inch Full HD (1920x1080p) IPS monitor with thin bezels and 100Hz refresh rate
- Flicker-Free technology and Blue Light Filter for reduced eye fatigue
- Adaptive Sync technology enables smooth frame rates to aid you in battle
- Optimized view settings offer "Game," "Movie," "Web," "Text," and "Mono" presets
- The VA2456-MHD supports laptops, PCs, Macs and more with HDMI, DisplayPort and VGA inputs



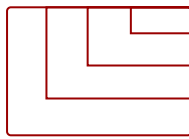
What's in the box.



24  
**DISPLAY**



IPS  
**PANEL**



1920 x 1080  
**RESOLUTION**



VA2456-MHD Monitor  
\*Power Cable varies by region



Power Cable\*



HDMI Cable



Quick Start Guide

### Product Description

---

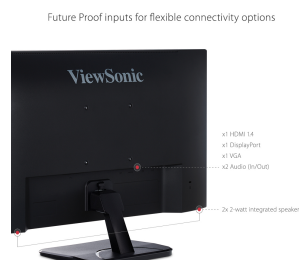
With future-proof connectivity, the ViewSonic® VA2456-mhd is a productivity-boosting monitor perfect for business professionals. Designed with SuperClear® IPS panel technology for wide-angle viewing and incredibly vivid colors, this monitor also features a 3-sided frameless design for a seamless viewing experience in multi-monitor setups. Extensive connectivity options include VGA, HDMI, and DisplayPort so that you can connect to a variety of HD and analog devices – today and tomorrow. In addition, Flicker-Free technology and a Blue Light Filter help to minimize eye strain from extended viewing periods. With ViewSonic's industry-leading 3-year limited warranty, this monitor is a solid long-term investment for enterprise and home applications.

# Specifications

	More Information
UPC	766907961911
Screen Size	24
Viewable Area (in.)	23.8
Panel Type	IPS
Display Resolution	1920 x 1080
Static Contrast Ratio	1,000:1
Dynamic Contrast Ratio	50,000,000:1
Light Source	LED
Brightness	250 cd/m2
Colors	16.7M
Color Space Support	6 bits + Hi FRC
Aspect Ratio	16:9
Response Time (Typical GTG)	14ms
Response Time (GTG w/OD)	5ms
Viewing Angles	178º horizontal, 178º vertical
Backlight Life (Hours)	30,000
Panel Surface	Anti-glare, Hard coating (3H)
Refresh Rate	100Hz
PC Resolution (max)	1920 x 1080
Mac® Resolution (max)	1920 x 1080
3.5mm Audio In	1
3.5mm Audio Out	1
VGA	1
HDMI 1.4 In	1
DisplayPort	1
Internal Speakers	2W (x2)
Eco Mode (Conserve)	14W
Eco Mode (optimized)	18W
Consumption (typical)	22W
Consumption (max)	31W
Voltage	AC 100-240V (universal), 50-60Hz
Stand-by	0.5W
Power Supply	Internal

<b>Cable Organization</b>	No
<b>Kensington Lock Slot</b>	1
<b>Physical Controls</b>	Key Buttons 1, 2, 3, 4, 5, 6 (Power)
<b>On Screen Display</b>	Auto Image Adjust, Contrast/Brightness, Input Select, Audio Adjust, Color Adjust, Information, Manual Image Adjust, Advanced Image Adjust, Setup Menu, Memory Recall (See user guide for complete OSD functionality)
<b>Temperature</b>	32-104° F (0 - 40° C)
<b>Humidity (non-condensing)</b>	20-90%
<b>VESA Compatible</b>	100 x 100 mm
<b>Frequency Horizontal</b>	HDMI (v1.4): 15~83KHz, DisplayPort (v1.2): 24~83KHz
<b>Frequency Vertical</b>	50 ~ 75Hz
<b>Digital Sync</b>	TMDS for HDMI 1.4, PCI-E for DisplayPort 1.2
<b>Tilt (Forward/Back)</b>	4° / 20°
<b>Net (lbs)</b>	8.6
<b>Net Without Stand (lbs)</b>	7.7
<b>Gross (lbs)</b>	11.9
<b>Net (kg)</b>	3.9
<b>Net Without Stand (kg)</b>	3.5
<b>Gross (kg)</b>	5.4
<b>Packaging (in.)</b>	23.6 x 16.3 x 5.2
<b>Physical (in.)</b>	21.3 x 15.3 x 7.8
<b>Physical Without Stand (in.)</b>	21.3 x 12.8 x 1.9
<b>Packaging (mm)</b>	600.0 x 414.0 x 131.0
<b>Physical (mm)</b>	539.8 x 389.6 x 198.4
<b>Physical Without Stand (mm)</b>	539.8 x 324.6 x 49.3
<b>Regulations</b>	cULus, FCC-B, ICES003, Energy Star 8.0, EPEAT, Mexico Energy, MX-CoC
<b>Package Contents</b>	VA2456-mhd Display, Power Cable, HDMI to HDMI (1.5m), Quick Start Guide
<b>Recycle/Disposal</b>	Please dispose of in accordance with local, state or federal laws.

UPC: 766907961911



**Contact Sales**  
[ViewSonic.com](https://www.viewsonic.com)  
888.881.8781  
email:  
[salesinfo@viewsonic.com](mailto:salesinfo@viewsonic.com)