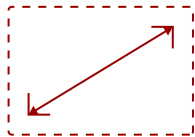


## PX747-4K - BRIGHT 3500 LUMENS 4K HOME THEATER PROJECTOR WITH HDR SUPPORT

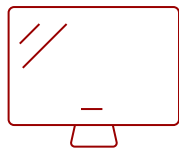
### Key Features

---

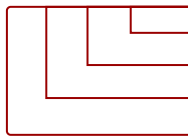
- Stunning 4K Ultra HD Resolution
- HDR Content Support
- 3,500 lumen brightness
- Dual HDMI Connectivity
- Long Lamp Life



30 - 300 in. / 0.76 - 7.62 m  
**DISPLAY**



**PANEL**



3840 x 2160  
**RESOLUTION**



### Product Description

---

4K all day. With incredible Ultra HD resolution and a high brightness of 3,500 lumens, the ViewSonic® PX747-4K projector delivers stunning home entertainment around the clock: day or night, in bright rooms or dark. Featuring HDR compatibility, exclusive SuperColor™ technology, and true Ultra HD 3840 x 2160 resolution, the PX747-4K delivers a breathtaking home cinema experience you expect to only get at the movie theater. With high brightness and room-filling sound, this projector provides bright visuals and immersive audio in nearly any room or environment. What's more, an energy-saving SuperEco® feature reduces power consumption and extends the lamp life by up to 15,000 hours\*. Set-up is a breeze too: 1.2x optical zoom and versatile connectivity options allow for more flexible mounting and easy installation. For an amazing home theater viewing experience with lifelike color and razor-sharp details, the PX747-4K delivers.

\*Lamp life may vary based on actual usage and other factors.

### Specifications

---

|  |                              |
|--|------------------------------|
| <b>UPC</b>   | 766907961416                 |
| <b>Light Source</b>                                | DLP Lamp                     |
| <b>Display Resolution</b>                          | 4K (3840x2160)               |
| <b>Display Resolution</b>                          | 3840 x 2160                  |
| <b>Brightness (Lumens)</b>                         | 3,500 ANSI                   |
| <b>Screen Size</b>                                 | 30 - 300 in. / 0.76 - 7.62 m |
| <b>Throw Distance</b>                              | 3.2 - 38.4 ft / 1.0 - 11.7 m |
| <b>Throw Ratio</b>                                 | 1.47 - 1.76                  |
| <b>Keystone</b>                                    | Vertical (+/- 40°)           |
| <b>Lens</b>  | 1.2x optical zoom            |
| <b>Light Source (watt)</b>                         | 240                          |
| <b>Light Source Life, Normal (hours)</b>           | 4000                         |
| <b>Light Source Life, Dynamic Eco-Mode (hours)</b> | 15000                        |
| <b>Color Depth</b>                                 | 1.07B Color (R/G/B 10bit)    |
| <b>Dynamic Contrast Ratio</b>                      | 12,000:1                     |
| <b>Aspect Ratio</b>                                | 16:9                         |
| <b>Input Lag</b>                                   | 37ms                         |
| <b>Frequency Horizontal</b>                        | 15K~135KHz                   |
| <b>Frequency Vertical</b>                          | 23~120Hz                     |
| <b>PC Resolution (max)</b>                         | 3840 x 2160                  |
| <b>PC Resolution (min)</b>                         | 640 x 480                    |
| <b>Mac® Resolution (max)</b>                       | 3840 x 2160                  |
| <b>Mac® Resolution (min)</b>                       | 640 x 480                    |
| <b>USB 2.0 Type A</b>                              | 1                            |
| <b>3.5mm 12V Trigger</b>                           | 1                            |
| <b>3.5mm Audio Out</b>                             | 1                            |
| <b>3.5mm Audio In</b>                              | 1                            |
| <b>Control (RS232)</b>                             | 1                            |
| <b>HDMI 1.4 (with HDCP 1.4)</b>                    | 1                            |
| <b>HDMI 2.0 (with HDCP 2.2)</b>                    | 1                            |
| <b>VGA In</b>                                      | 1                            |
| <b>Mini USB</b>                                    | 1                            |
| <b>Internal Speakers</b>                           | 10W (x1)                     |
| <b>Voltage</b>                                     | 100-240V+/- 10%, 50/60Hz AC  |
| <b>Consumption (typical)</b>                       | 310W                         |
| <b>Stand-by</b>                                    | <0.5W                        |

|                                  |  |
|----------------------------------|--|
| <b>Physical Controls</b>         | Power, keystone/arrow keys, left/blank, menu/exit, right/panel key lock, mode/enter, auto, source  |
| <b>On Screen Display</b>         | Display, Image, Power Management, Basic, Advanced, System, Information (See user guide for full OSD functionality)   |
| <b>Temperature</b>               | 32-104° F (0 - 40° C)  |
| <b>Humidity (non-condensing)</b> | 0-90%  |
| <b>Kensington Lock Slot</b>      | 1  |
| <b>Net (lbs)</b>                 | 9.3  |
| <b>Gross (lbs)</b>               | 11.0   |
| <b>Net (kg)</b>                  | 4.2  |
| <b>Gross (kg)</b>                | 5.0  |
| <b>Packaging (in.)</b>           | 16.4 x 8.2 x 13.2  |
| <b>Physical (in.)</b>            | 13.1 x 5.3 x 10.3  |
| <b>Packaging (mm)</b>            | 417.0 x 207.0 x 336.0  |
| <b>Physical (mm)</b>             | 332.0 x 135.0 x 261.0  |
| <b>Regulations</b>               | FCC, cTUVus, ROHS  |
| <b>Package Contents</b>          | PX747-4K projector, power cable, VGA cable, remote control, Quick Start Guide  |
| <b>Warranty</b>                  | Three-year limited warranty on parts and labor, 1-year limited warranty on lamp, 1st year free Express Exchange® service. (One year Express Exchange Service requires product registration). |
| <b>Recycle/Disposal</b>          | Please dispose of in accordance with local, state or federal laws.   |

UPC: 766907961416



**Contact Sales**  
[ViewSonic.com](http://ViewSonic.com)

888.881.8781  
 email:  
[salesinfo@viewsonic.com](mailto:salesinfo@viewsonic.com)