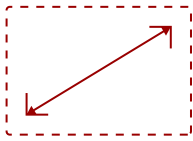


VA2459-SMH-S

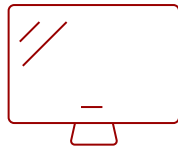
Key Features

REFURBISHED

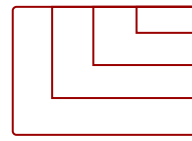
- SuperClear® IPS Panel Technology
 - Frameless Design
 - Versatile Connectivity
 - Full HD 1080p resolution
 - Optimized View Settings
-



24
DISPLAY



IPS
PANEL



1920 x 1080
RESOLUTION



Product Description

With flexible connectivity, wide-angle viewing, and amazing screen performance, the ViewSonic® VA2459-smh delivers solid multimedia features and a sleek design at a great value. Featuring SuperClear® IPS panel technology, the VA2459-smh delivers stunning brightness and contrast at nearly any viewing angle. A minimalistic design, edge-to-edge screen, and frameless bezel make this an ideal monitor for nearly seamless multi-screen setups. Whether for working at the office, or enjoying entertainment at home, the VA2459-smh also features an HDMI port for flexible connectivity to PCs, laptops, gaming consoles, and other multimedia devices. In addition, a 3-year limited warranty, along with one of the industry's best pixel performance policies, makes the VA2459-smh a great overall value choice.

Specifications

More Information

UPC	766907926415
Screen Size	24
Viewable Area (in.)	23.8
Panel Type	IPS
Display Resolution	1920 x 1080
Static Contrast Ratio	1,000:1
Dynamic Contrast Ratio	80M:1
Light Source	LED

Brightness	250 cd/m2
Colors	16.7M
Color Space Support	6-Bit+ HI-FRC
Aspect Ratio	16:9
Response Time (Typical GTG)	14ms
Response Time (GTG w/OD)	7ms
Viewing Angles	178° horizontal, 178° vertical
Panel Surface	Anti-glare, Hard coating (3H)
PC Resolution (max)	1920 x 1080
Mac® Resolution (max)	1920 x 1080
3.5mm Audio In	1
3.5mm Audio Out	1
VGA	1
HDMI 1.4 In	1
Internal Speakers	2W (x2)
Eco Mode (Conserve)	14W
Eco Mode (optimized)	18W
Consumption (typical)	21W
Consumption (max)	28W
Voltage	AC 100-240V (universal), 50-60Hz
Stand-by	0.5W
Cable Organization	No
Kensington Lock Slot	1
Physical Controls	1, 2, 3, 4, 5, Power
On Screen Display	Auto Image Adjust, Contrast/Brightness, Input Select, Audio Adjust, Color Adjust, Information, Manual Image Adjust, Advanced Image Adjust, Setup Menu, Memory Recall (See user guide for complete OSD functionality)
Temperature	32-104° F (0 - 40° C)
Humidity (non-condensing)	20-90%
VESA Compatible	100 x 100 mm
Frequency Horizontal	24 ~ 83KHz
Frequency Vertical	50 ~ 76Hz
Digital Sync	TMDS
Net (lbs)	7.2
Net Without Stand (lbs)	6.2
Gross (lbs)	10.8
Net (kg)	3.3

Net Without Stand (kg)	2.8
Gross (kg)	4.9
Packaging (in.)	24.1 x 18.0 x 6.3
Physical (in.)	21.3 x 15.4 x 7.9
Physical Without Stand (in.)	21.3 x 12.8 x 1.8
Packaging (mm)	613 x 457 x 160
Physical (mm)	540.4 x 389.9 x 200
Physical Without Stand (mm)	540.4 x 323.8 x 45.5
Regulations	cULus, FCC-B, ICES003, Energy Star, Mexico-CoC, Mexico Energy
Package Contents	LCD Display, Power Cable , VGA Cable , Audio Cable , Quick Start Guide
Recycle/Disposal	Please dispose of in accordance with local, state or federal laws.
Warranty	*Refurbished. 30-day DOA policy for full refund, with a 90-day repair warranty on parts and labor.
Classification	Refurbished

UPC: 766907926415



Contact Sales

ViewSonic.com

888.881.8781

email: salesinfo@viewsonic.com