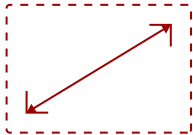


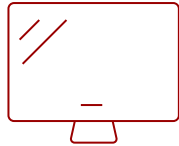
VA2452SM\_H2-S

## Key Features

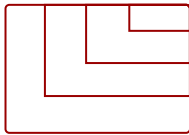
---



24"  
**DISPLAY**



MVA  
**PANEL**



Up to 1920x1080 non-interlaced  
**RESOLUTION**



## Product Description

---

The dual pack ViewSonic® VA2452Sm\_H2 is exclusively designed for corporate users in need of high-performance desktop displays with easy deployment and mounting capabilities. Sold as a dual pack without monitor stands, the VA2452Sm\_H2 requires less packaging for a reduced environmental footprint, while still providing VESA compatible mounting for easy installation. With ViewSonic SuperClear® MVA panel technology and 3000:1 static contrast ratio, this monitor delivers an incredible front-of-screen work experience at nearly any viewing angle. Versatile input options include future-proof DisplayPort, as well as DVI and VGA inputs, for productivity-boosting connectivity to PC systems, laptops, and other work devices. ViewSonic's exclusive ViewMode feature provides intuitive presets that deliver optimized screen performance in different applications. In addition, Flicker-Free technology and a Blue Light Filter help to eliminate eye strain from extended viewing periods for improved productivity. Lastly, a 3-year limited warranty, along with one of the industry's best pixel performance policies, provides great value for the high-performance VA2452Sm\_H2 dual monitor pack.

## Specifications

---


<b>UPC</b>	766907956016
<b>Screen Size</b>	24"
<b>Viewable Area (in.)</b>	23.6
<b>Panel Type</b>	MVA
<b>Display Resolution</b>	1920 x 1080
<b>Static Contrast Ratio</b>	3,000:1
<b>Light Source</b>	LED
<b>Brightness</b>	250 cd/m2
<b>Colors</b>	16.7M
<b>Response Time (Typical GTG)</b>	6.5ms
<b>Viewing Angles</b>	178° horizontal, 178° vertical
<b>Backlight Life (Hours)</b>	40,000
<b>Panel Surface</b>	Anti-glare, hard-coating (3H)
<b>PC Resolution (max)</b>	Up to 1920x1080 non-interlaced
<b>Mac® Resolution (max)</b>	Up to 1920x1080
<b>3.5mm Audio In</b>	1
<b>VGA</b>	1
<b>DVI-D</b>	1
<b>DisplayPort</b>	1
<b>Internal Speakers</b>	1.5-watt (x2)
<b>Eco Mode (Conserve)</b>	15W
<b>Consumption (typical)</b>	23W
<b>Consumption (max)</b>	30W
<b>Voltage</b>	AC 100-240V (universal), 50-60Hz
<b>Cable Organization</b>	No
<b>Kensington Lock Slot</b>	1
<b>Physical Controls</b>	Power, 1, Up, Down, 2
<b>On Screen Display</b>	Auto Image Adjust, Contrast/Brightness, Input Select, Audio Adjust, Color Adjust, Information, Manual Image Adjust, Setup Menu, Memory Recall
<b>Temperature</b>	32-104° F (0 - 40° C)
<b>Humidity (non-condensing)</b>	10-90%
<b>VESA Compatible</b>	100 x 100 mm
<b>Frequency Horizontal</b>	24~82kHz
<b>Frequency Vertical</b>	50~75Hz
<b>Analog Sync</b>	Separate Sync
<b>Regulations</b>	cTUVus, FCC-B, ICES003, UL-MX-CoC, Mexico Energy, Reach, WEEE

<b>Net Without Stand (lbs)</b>	7.8
<b>Gross (lbs)</b>	19.8
<b>Net Without Stand (kg)</b>	3.5
<b>Gross (kg)</b>	9.0
<b>Packaging (in.)</b>	24.3 x 16.1 x 9.5
<b>Physical Without Stand (in.)</b>	23.3 x 13.2 x 2.0
<b>Packaging (mm)</b>	617 x 409 x 240
<b>Physical Without Stand (mm)</b>	591.8 x 335.3 x 50.8
<b>Package Contents</b>	VA2452Sm monitor (x2) , Power cable, VGA cable, DisplayPort cable, Quick Start Guide
<b>Recycle/Disposal</b>	Please dispose of in accordance with local, state or federal laws.
<b>Classification</b>	Discontinued, Refurbished

UPC: 766907956016



**Contact Sales**  
[ViewSonic.com](http://ViewSonic.com)

888.881.8781   
 email:  
[salesinfo@viewsonic.com](mailto:salesinfo@viewsonic.com)