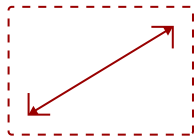


VG2449-S

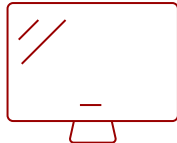
Key Features

REFURBISHED

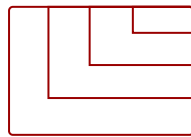
- SuperClear MVA Panel Technology
- High-definition Daisy Chain Capability
- Versatile Connectivity
- Ergonomic Design
- Optimized View Settings



24
DISPLAY



MVA
PANEL



1920 x 1080
RESOLUTION



Product Description

With future-proof connectivity and advanced ergonomics, the ViewSonic® VG2449 is a productivity-boosting monitor perfect for corporate, government, and education environments. Designed with both a DisplayPort input and output, this monitor delivers easy, single-cable daisy-chaining of multiple monitors for increased productivity. With SuperClear® MVA panel technology for wide-angle viewing, and a 20M:1 dynamic contrast ratio, incredibly sharp images and vivid color remain consistent across multiple daisy-chained screens. For maximum comfort and a customized fit, a robust fully ergonomic stand gives you tilt, pivot, swivel, and height-adjustable options. Additional connectivity options include VGA, HDMI, and Mini DisplayPort so that you can connect to a variety of high-definition and analog devices - today and tomorrow.

Specifications

More Information

UPC

766907890716

Screen Size

24

Viewable Area (in.)	23.6
Panel Type	MVA
Display Resolution	1920 x 1080
Static Contrast Ratio	3,000:1
Dynamic Contrast Ratio	20M:1
Light Source	WLED
Brightness	250 cd/m ²
Colors	16.7M
Aspect Ratio	16:9
Response Time (Typical GTG)	5ms
Viewing Angles	178° horizontal, 178° vertical
Backlight Life (Hours)	40,000
Panel Surface	Anti-glare, hard-coating (3H)
PC Resolution (max)	1920 x 1080
Mac® Resolution (max)	1920 x 1080
USB 3.0 Type A	2
USB 3.0 Type B	1
VGA	1
HDMI 1.4 In	1
DisplayPort	1
DisplayPort Out	1
Mini DisplayPort	1
Internal Speakers	2W (x2)
Eco Mode (Conserve)	16
Eco Mode (optimized)	20
Consumption (typical)	20
Consumption (max)	46
Voltage	AC 100-240V (universal), 50-60Hz
Stand-by	0.5W
Cable Organization	No
Kensington Lock Slot	1
Physical Controls	1,2, Up, Down, Power
On Screen Display	Auto Image Adjust, Contrast/Brightness, Input Select, Audio Adjust, Color Adjust, Information, Manual Image Adjust, Advanced Image Adjust, Setup Menu, Memory Recall (See user guide for complete OSD functionality)
Temperature	32-104° F (0 - 40° C)
Humidity (non-condensing)	20-90%

VESA Compatible	100 x 100 mm
Frequency Horizontal	Analog: 24 ~ 82KHz. Digital: 15 ~ 82KHz
Frequency Vertical	Analog: 50 ~ 75Hz. Digital: 50 ~ 75Hz
Analog Sync	Separate Sync / Composite Sync / Sync on Green , TMD5, PCI-E
Height Adjust	135 mm / 5.3 in
Swivel	360°
Pivot (Right/Left)	90° / 0°
Tilt (Forward/Back)	6° / 25°
Regulations	cULus, FCC, ICES003, Energy Star 7.0, EPEAT, UL-MX-CoC, Mexico Energy
Net (lbs)	11.1
Net Without Stand (lbs)	7.9
Gross (lbs)	15.3
Net (kg)	5
Net Without Stand (kg)	3.6
Gross (kg)	7
Packaging (in.)	25.1 x 19.8 x 7.1
Physical (in.)	22.5 x 17.2 x 9.4
Physical Without Stand (in.)	22.5 x 13.4 x 2.1
Packaging (mm)	637 x 502 x 180
Physical (mm)	571 x 436 x 240
Physical Without Stand (mm)	570 x 340 x 54
Package Contents	LCD Display Power Cable (1.8m) Mini DP to DP Cable (1.8m) USB3.0 Upstream Cable (1.5m) Quick Start Guide ViewSonic Wizard CD-ROM
Recycle/Disposal	Please dispose of in accordance with local, state or federal laws.
Warranty	*Refurbished. 30-day DOA policy for full refund, with a 90-day repair warranty on parts and labor.
Classification	Discontinued, Refurbished

UPC: 766907890716



Contact Sales

ViewSonic.com

888.881.8781

email:

salesinfo@viewsonic.com