

## PA503W - 3800 LUMENS WXGA HOME WITH HDMI AND VERTICAL KEYSTONE

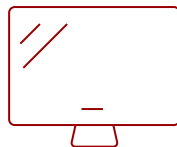
### Key Features

---

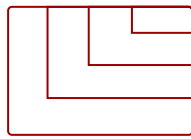
- High brightness 3800 Lumens WXGA projector with advanced visual features
- 1.1x optical zoom, 40 degree vertical keystone for flexible setup
- A low 16ms input latency provides faster frame-by-frame action for smooth images without delay
- SuperEco Mode allows the lamp to shine bright for up to 15,000 hours
- Supports most media players, PCs, Macs, and mobile devices with inputs such as HDMI, VGA, mini USB



30 - 300 in. / 0.76 - 7.62 m  
**DISPLAY**



**PANEL**



VGA(640 x 480) to FullHD(1920 x 1080)  
**RESOLUTION**



### Product Description

---

The ViewSonic® PA503W price-performance projector features 3,800 lumens, native WXGA 1280x800 resolution, and an intuitive, user-friendly design. Exclusive SuperColor™ technology offers a wider color range for lifelike image projection. The PA503W also features extensive connectivity including HDMI, 2 x VGA in, Composite Video, 1 x VGA output, and Audio in/out. An energy-saving SuperEco™ feature reduces power consumption by up to 70%, and extends the lamp life by up to 15,000 hours\*. With advanced audiovisual features, flexible connectivity options, and an affordable price, the PA503W is ideal for use in education and small business environments.

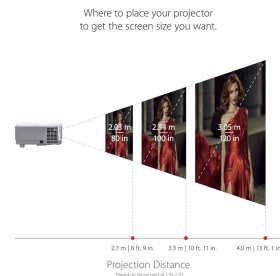
\*Energy consumption and lamp life may vary based on actual usage and other factors.

# Specifications

	More Information
UPC	766907904918
Light Source	DLP Lamp
Display Resolution	WXGA (1280x800)
Display Resolution	1280 x 800
Brightness (Lumens)	3,800 ANSI
Screen Size	30 - 300 in. / 0.76 - 7.62 m
Throw Distance	3.28 - 36.02 ft / .99 - 10.98 m
Throw Ratio	1.55~1.70
Keystone	Vertical (+/- 40°)
Lens	1.1x optical zoom
Light Source (watt)	200
Light Source Life, Normal (hours)	5000
Light Source Life, Dynamic Eco-Mode (hours)	15000
Color Depth	1.07B Color (R/G/B 10bit)
Dynamic Contrast Ratio	22,000:1
Aspect Ratio	16:10
Input Lag	37ms
Frequency Horizontal	15K~102KHz
Frequency Vertical	23~120MHz
PC Resolution (max)	VGA(640 x 480) to FullHD(1920 x 1080)
Mac® Resolution (max)	VGA(640 x 480) to FullHD(1920 x 1080)
3.5mm Audio Out	1
3.5mm Audio In	1
Control (RS232)	1
HDMI In	1
VGA In	2
VGA Out	1
Composite RCA Video In	1
Mini USB	1
Internal Speakers	2W (x1)
Voltage	100-240V+/- 10%, 50/60Hz AC
Consumption (typical)	260W
Stand-by	<0.5W

<b>Temperature</b>	32-104º F (0 - 40º C)
<b>Net (lbs)</b>	4.9
<b>Gross (lbs)</b>	7.1
<b>Net (kg)</b>	2.2
<b>Gross (kg)</b>	3.2
<b>Packaging (in.)</b>	14.4 x 7.4 x 11.8
<b>Physical (in.)</b>	11.6 x 4.3 x 8.6
<b>Packaging (mm)</b>	365 x 188 x 300
<b>Physical (mm)</b>	294 x 110 x 218
<b>Regulations</b>	FCC (including ICES003), cTUVus, NOM, TUV-Rheinland S Mark
<b>Package Contents</b>	PA503W projector, power cable, VGA cable, laser remote control with batteries, Quick Start Guide
<b>Warranty</b>	Three-year limited warranty on parts and labor, 1-year limited warranty on lamp, 1st year free Express Exchange® service. (One year Express Exchange Service requires product registration).
<b>Recycle/Disposal</b>	Please dispose of in accordance with local, state or federal laws.

UPC: 766907904918



**Contact Sales**  
[ViewSonic.com](http://ViewSonic.com)  
 888.881.8781  
 email:  
[salesinfo@viewsonic.com](mailto:salesinfo@viewsonic.com)