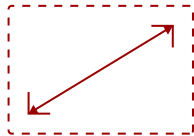
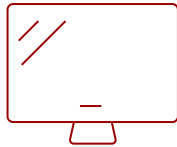


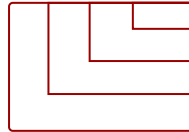
IFP6550 - 65" 4K TOUCH ENABLED VIEWBOARD SMART DISPLAY

Key Features

- Ultra HD Resolution
- 20-point Multi-touch Interactive Screen
- myViewBoard™ Annotation Software
- Out-of-Box Collaboration
- Free Download Available (For More Info, See Below)
- Share With Air Class
- Camera Mounting Bracket Included

65
DISPLAY

PANEL



RESOLUTION



Product Description

This item has been discontinued. Please see our replacement sku [here](#). Featuring 4K Ultra HD resolution and an immersive 20-point touch screen, the ViewSonic® ViewBoard® IFP6550 delivers incredible collaborative capabilities for 21st century boardrooms and classrooms. With vBoard™ embedded software, this 65" interactive flat panel lets multiple users write or draw on the screen with their fingers and styluses. For more robust annotation options, ViewBoard® Interactive Annotation Software for Windows PC is available via a free download. With a built-in quad-core processor, as well as versatile connectivity options including multiple HDMI, VGA, RS232, RJ45, and USB ports, this display provides powerful computing for annotation and multimedia playback without the need for a PC. This display delivers optional slot-in PC capability for more computing-intensive interactive applications. The IFP6550 features a VESA-compatible design and can be placed on a wall mount, or on an optional trolley cart for flexible installation in classrooms and corporate meeting rooms.

For more detailed information on how ViewSonic ViewBoards can best be utilized in a school environment, see our [ViewBoard FAQs](#).

Specifications

More Information

UPC	766907912814
OS	ViewBoard OS (embedded Android 5)
GPU	ARM Mali450 MP4
CPU	ARM Cortex A53 Quad Core Processor 1.5GHz
Memory	2GB

Storage	16GB
Built-in Software	OSD / Remote Control / Annotation overlay
Internal Speakers	16W (x2)
HDMI 1.4 In	2
HDMI 2.0 In	1
VGA	1
DisplayPort	1
Composite RCA	1
3.5mm Audio In	1
3.5mm Audio Out	1
SPDIF Audio Out	1
USB 3.0	2
USB 2.0	4
Slot-in PC Slot	1
USB B Touch Port	2
Ethernet LAN (RJ45)	1
WIFI Module Slot	1
Intel® OPS Slot In (80-pin)	1
Expansion Slot	1
Voltage	100-240 VAC, 50-60Hz
Consumption With Slot-In PC (typical)	285W
Consumption Without Slot-In PC (typical)	190W
Stand-by	<.5W
On Screen Display	Input, Volume, Backlight, Audio, Screen, Display, Adjust
Remote Control	Volume, Channel, Source, Mute, Back, Input, Menu
Temperature	32-104° F (0 - 40° C)
Humidity (non-condensing)	10-90%
Touch Technology	Infrared
Touch Points	Windows: 20, Android: 20
Net (lbs)	103.62
Gross (lbs)	132.28
Net (kg)	47
Gross (kg)	60
Packaging (in.)	66.81 x 42.17 x 8.66
Physical (in.)	59.9 x 36.3 x 3.9
Packaging (mm)	1697 x 1071 x 220

Physical (mm)	1521 x 992 x 99
VESA Compatible	600 x 400 mm
Camera Mounting Bracket	1
Warranty	3-year limited warranty on parts, labor and backlight, onsite warranty
Recycle/Disposal	Please dispose of in accordance with local, state or federal laws.
Package Contents	IFP6550 display, stylus pen x 3, power cable, remote control with batteries, ViewSonic Wizard CD (User Guide), Quick Start Guide, USB cable, audio cable, camera bracket, VGA cable, power cords
Regulations	cTUVus, FCC, Mexico Energy, CE, CB, RoHS, ErP, WEEE
Ethernet LAN	(10/100/1000M) (Android 10/100, PC 10/100/1000)
Screen Size	65
Viewable Area (in.)	65
Light Source	LED
Display Resolution	3840 x 2160
Refresh Rate	60Hz
Aspect Ratio	16:9
Static Contrast Ratio	1,200:1
Backlight Life (Hours)	50,000
Brightness	350 cd/m2
Response Time (Typical GTG)	8ms
Viewing Angles	178° horizontal, 178° vertical
Panel Surface	Anti-glare 7H tempered glass
Operation Rating	16/7

UPC: 766907912814



Contact Sales

ViewSonic.com

888.881.8781

email:

salesinfo@viewsonic.com