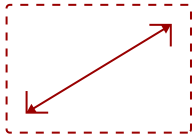


TD2230-S

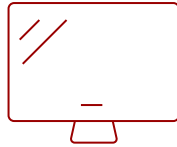
## Key Features

### REFURBISHED

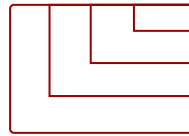
- 10-point projected capacitive touch
- SuperClear® IPS panel technology
- Frameless design
- Versatile connectivity
- Durable, scratch-resistant screen



22  
**DISPLAY**



IPS  
**PANEL**



Up to 1920x1080 non-interlaced  
**RESOLUTION**



## Product Description

The ViewSonic® TD2230 is a 22" (21.5" viewable) Full HD multi-touch display. With a SuperClear® IPS panel and 10-point projected capacitive touch technology, this display delivers stunning front-of-screen performance with a responsive and accurate touch experience. Featuring a 7H hardness touch screen, edge-to-edge frameless design, and up to 10 simultaneous touch points, this durable display allows users to tap, swipe, pinch, and zoom with ease – perfect for retail, education, or enterprise. An advanced ergonomic bookstand design provides a full range of motion for the desktop, and a VESA-compatible mount allows for flexible mounting options on a monitor stand or wall. Future-proof connectivity options include HDMI, DisplayPort, and USB 3.0, while VGA is also available for legacy systems. Cross compatibility with a wide range of operating systems include Windows 10, and certain Android and Linux versions. ViewSonic's exclusive ViewMode™ feature provides intuitive presets for optimized screen performance in different applications. In addition, Flicker-Free technology and a Blue Light Filter help to minimize eye strain from extended viewing periods. Industry-leading warranty protection and legendary ViewSonic product quality makes this high performance multi-touch display a great long-term investment for all touch applications.

## Specifications

### More Information

<b>UPC</b>	766907951011
<b>Screen Size</b>	22
<b>Viewable Area (in.)</b>	21.5
<b>Panel Type</b>	IPS
<b>Display Resolution</b>	1920 x 1080
<b>Static Contrast Ratio</b>	1,000:1
<b>Dynamic Contrast Ratio</b>	50,000,000:1

<b>Light Source</b>	LED
<b>Brightness</b>	250 cd/m2
<b>Colors</b>	16.7M
<b>Response Time (Typical GTG)</b>	14ms
<b>Viewing Angles</b>	178° horizontal, 178° vertical
<b>Backlight Life (Hours)</b>	30,000
<b>Panel Surface</b>	Anti-glare, Hard coating 7H
<b>PC Resolution (max)</b>	Up to 1920x1080 non-interlaced
<b>Mac® Resolution (max)</b>	Up to 1920x1080
<b>USB 3.0 Type A</b>	2
<b>USB 3.0 Type B</b>	1
<b>3.5mm Audio In</b>	1
<b>3.5mm Audio Out</b>	1
<b>HDMI In</b>	1
<b>VGA</b>	1
<b>DisplayPort</b>	1
<b>Power in</b>	DC 19V/2.37A
<b>Touch Technology</b>	Capacitive
<b>Touch Points</b>	10-Point Touch
<b>Internal Speakers</b>	3W (x2)
<b>Eco Mode (Conserve)</b>	16W
<b>Eco Mode (optimized)</b>	18W
<b>Consumption (typical)</b>	25W
<b>Consumption (max)</b>	28W
<b>Voltage</b>	AC 100-240V (universal), 50-60Hz
<b>Cable Organization</b>	No
<b>Physical Controls</b>	1, 2, Down, Up, Power
<b>On Screen Display</b>	Auto Image Adjust, Contrast/Brightness, Input Select, Audio Adjust, Color Adjust, Information, Manual Image Adjust, Setup Menu, Memory Recall (See user guide for complete OSD functionality)
<b>Temperature</b>	32-104° F (0 - 40° C)
<b>Humidity (non-condensing)</b>	20-90%
<b>VESA Compatible</b>	100 x 100 mm
<b>Frequency Horizontal</b>	24~82kHz
<b>Frequency Vertical</b>	50~76Hz
<b>Analog Sync</b>	Separate Sync, Composite Sync, Sync on Green, TMDS, PCI-E
<b>Tilt (Forward/Back)</b>	20°~70°, lay flat

<b>Net (lbs)</b>	7.9
<b>Net Without Stand (lbs)</b>	7.9
<b>Gross (lbs)</b>	10.4
<b>Net (kg)</b>	3.6
<b>Net Without Stand (kg)</b>	3.6
<b>Gross (kg)</b>	4.7
<b>Packaging (in.)</b>	21.7 x 14.6 x 4.5
<b>Physical (in.)</b>	19.3 x 11.8 x 5.1
<b>Physical Without Stand (in.)</b>	19.3 x 11.8 x 1.9
<b>Packaging (mm)</b>	550 x 371 x 114
<b>Physical (mm)</b>	490.3 x 298.8 x 129.7
<b>Physical Without Stand (mm)</b>	490.3 x 298.8 x 47.3
<b>Regulations</b>	cULus, FCC-B w/ICES003, Energy Star 7.0, DOE EPEAT, UL-MX-CoC, Mexico Energy
<b>Package Contents</b>	TD2230 monitor, Power cable, Power adapter, HDMI cable, USB 3.0 cable, Audio cable, Quick Start Guide, ViewSonic Wizard CD
<b>Recycle/Disposal</b>	Please dispose of in accordance with local, state or federal laws.
<b>Warranty</b>	*Refurbished. 30-day DOA policy for full refund, with a 90-day repair warranty on parts and labor.
<b>Classification</b>	Discontinued, Refurbished

UPC: 766907951011



## Contact Sales

[ViewSonic.com](http://ViewSonic.com)

888.881.8781

email: [salesinfo@viewsonic.com](mailto:salesinfo@viewsonic.com)