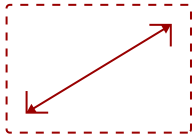


VX2276-SMHD-S

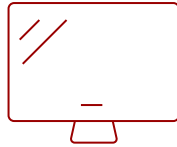
## Key Features

### REFURBISHED

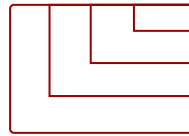
- Ultra-slim panel with frameless design
- SuperClear® IPS panel technology
- Versatile connectivity
- Full HD 1080p resolution
- Superior color rendering and intuitive settings



22  
**DISPLAY**



IPS  
**PANEL**



Up to 1920x1080 non-interlaced  
**RESOLUTION**



## Product Description

The ViewSonic® VX2276-smhd is a sleek 22" (21.5" viewable) Full HD monitor with a modern and minimalist style perfect for home use. With SuperClear® IPS Panel technology, this monitor offers best-in-class screen performance with ultra-wide viewing angles. A premium ID includes an ultra-slim profile, unique desktop stand, and a sleek edge-to-edge frameless design, that when combined with vivid 1920x1080 resolution and dual speakers, deliver an immersive viewing experience for home entertainment and multimedia applications. HDMI, DisplayPort, and VGA inputs offer flexible connectivity options for both computing and gaming environments, while ViewSonic's exclusive ViewMode™ feature provides intuitive presets for optimized screen performance in different applications. In addition, Flicker-Free technology and a Blue Light Filter help to minimize eye strain from extended viewing periods. With ViewSonic's industry-leading 3-year limited warranty, this monitor is a solid long-term investment that combines style and high performance for the home.

## Specifications

### More Information

<b>UPC</b>	766907878110
<b>Screen Size</b>	22
<b>Viewable Area (in.)</b>	21.5
<b>Panel Type</b>	IPS
<b>Display Resolution</b>	1920 x 1080
<b>Static Contrast Ratio</b>	1,000:1
<b>Dynamic Contrast Ratio</b>	80M:1
<b>Light Source</b>	LED

<b>Brightness</b>	250 cd/m2
<b>Colors</b>	16.7M
<b>Response Time (Typical GTG)</b>	14ms
<b>Response Time (GTG w/OD)</b>	7ms
<b>Viewing Angles</b>	178° horizontal, 178° vertical
<b>Backlight Life (Hours)</b>	30,000
<b>Panel Surface</b>	Anti-glare, hard-coating (3H)
<b>PC Resolution (max)</b>	Up to 1920x1080 non-interlaced
<b>Mac® Resolution (max)</b>	Up to 1920x1080
<b>3.5mm Audio In</b>	1
<b>3.5mm Audio Out</b>	1
<b>HDMI In</b>	1
<b>VGA</b>	1
<b>DisplayPort</b>	1
<b>Internal Speakers</b>	3-watt (x2)
<b>Eco Mode (Conserve)</b>	15W
<b>Eco Mode (optimized)</b>	18W
<b>Consumption (typical)</b>	21W
<b>Consumption (max)</b>	30W
<b>Voltage</b>	AC 100-240V (universal), 50-60Hz
<b>Cable Organization</b>	No
<b>Kensington Lock Slot</b>	1
<b>Physical Controls</b>	GameMode, 1, 2, 3, 4, Power
<b>On Screen Display</b>	Auto Image Adjust, Contrast/Brightness, Input Select, Audio Adjust, Color Adjust, Information, Manual Image Adjust, Advanced Image Adjust, Setup Menu, Memory Recall (See user guide for complete OSD functionality)
<b>Temperature</b>	32-104° F (0 - 40° C)
<b>Humidity (non-condensing)</b>	20-90%
<b>Frequency Horizontal</b>	24~82kHz
<b>Frequency Vertical</b>	50~75Hz
<b>Analog Sync</b>	Separate Sync,TMDS, PCI-E
<b>Tilt (Forward/Back)</b>	5° / 15°
<b>Net (lbs)</b>	5.4
<b>Gross (lbs)</b>	10.2
<b>Net (kg)</b>	2.4
<b>Gross (kg)</b>	4.6
<b>Packaging (in.)</b>	22.2 x 15.0 x 4.5


<b>Physical (in.)</b>	19.6 x 15.5 x 8.2
<b>Packaging (mm)</b>	563 x 382 x 115
<b>Physical (mm)</b>	497.9 x 392.8 x 209
<b>Regulations</b>	cULus, FCC, ICES-003, Energy Star, EPEAT, NRCan, UL-MXCoC, Mexico Energy, CE, WEEE, Energy Efficiency (EEL), EAC, CEC
<b>Package Contents</b>	VX2276-smhd monitor, Power cable, AC/DC adapter, Audio cable, VGA cable, HDMI cable, Quick Start Guide
<b>Recycle/Disposal</b>	Please dispose of in accordance with local, state or federal laws.
<b>Warranty</b>	*Refurbished. 30-day DOA policy for full refund, with a 90-day repair warranty on parts and labor.
<b>Classification</b>	Discontinued, Refurbished

UPC: 766907878110



**Contact Sales**

[ViewSonic.com](http://ViewSonic.com)

888.881.8781 

email: [salesinfo@viewsonic.com](mailto:salesinfo@viewsonic.com) 