

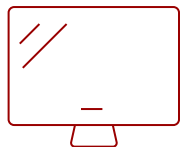
PJD6552LW-S

## Key Features

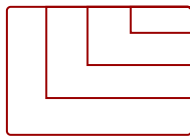
---



30 - 300 in. / 0.76 - 7.62 m  
**DISPLAY**



**PANEL**



1920 x 1080  
**RESOLUTION**



## Product Description

---

The ViewSonic® LightStream® PJD6552LW WXGA projector features 3,500 lumens, WXGA 1280 x 800 native resolution, an intuitive, user-friendly design and a sleek white chassis. Exclusive SuperColor™ technology offers a wide color gamut for beautiful image production in nearly any environment, while SonicExpert®, ViewSonic's proprietary sound enhancement technology, powers a 10W cube speaker to deliver incredibly clear and audible sound. PortAll®—a hidden compartment with an integrated and secure MHL/HDMI port—lets you discretely stream multimedia content from a wireless dongle, or lets you connect to other devices via an HDMI cable. A cable management hood eliminates unsightly cable clutter, and a top lamp door enables easy access for lamp maintenance. With shorter throw ratio, 1.3x optical zoom, H/V keystone correction, corner adjustments, and extensive connectivity, the PJD6552LW provides for flexible and quick set-ups. The PJD6552LW is the ideal projector for both high definition presentations and vibrant multimedia entertainment.

# Specifications

	More Information
<b>UPC</b>	766907951615
<b>Light Source</b>	DLP Lamp
<b>Display Resolution</b>	WXGA (1280x800)
<b>Display Resolution</b>	1280 x 800
<b>Brightness (Lumens)</b>	3,500 ANSI
<b>Screen Size</b>	30 - 300 in. / 0.76 - 7.62 m
<b>Throw Distance</b>	3.3 - 32.8 ft. / 1.0 - 10.0 m
<b>Throw Ratio</b>	1.21~1.57
<b>Keystone</b>	Vertical ( $\pm 30^\circ$ ) / Horizontal ( $\pm 30^\circ$ )
<b>Lens</b>	1.3x Manual optical zoom / manual optical focus
<b>Light Source (watt)</b>	210
<b>Light Source Life, Normal (hours)</b>	4000
<b>Light Source Life, Dynamic Eco-Mode (hours)</b>	10000
<b>Color Depth</b>	30 bits, 1.07B Color (10+10+10)
<b>Dynamic Contrast Ratio</b>	22,000:1
<b>Aspect Ratio</b>	16:10
<b>Input Lag</b>	37ms
<b>Frequency Horizontal</b>	15-102KHz
<b>Frequency Vertical</b>	23-120Hz
<b>PC Resolution (max)</b>	1920 x 1080
<b>Mac® Resolution (max)</b>	1920 x 1080
<b>Ethernet LAN (RJ45)</b>	1
<b>3.5mm Audio Out</b>	1
<b>3.5mm Audio In</b>	2
<b>Control (RS-232)</b>	1
<b>HDMI 1.4 In</b>	1
<b>HDMI MHL</b>	1
<b>VGA In</b>	2
<b>VGA Out</b>	1
<b>Composite RCA Video In</b>	1
<b>Mini USB</b>	1
<b>RGB Input</b>	15-pin mini D-Sub (x2)
<b>Internal Speakers</b>	10W (x1)

<b>Voltage</b>	100~240VAC (Auto Switching), 50-60Hz (universal)
<b>Consumption (max)</b>	330W
<b>Stand-by</b>	<0.5W
<b>Physical Controls</b>	Power, keystone/arrow keys, left/blank, menu/exit, right/panel key lock, mode/enter, auto, source
<b>On Screen Display</b>	Display, Picture, Source, System Setup (Basic), System Setup (Advanced), Information(See user guide for full OSD functionality)
<b>Temperature</b>	32-104° F (0 - 40° C)
<b>Humidity (non-condensing)</b>	10-90%
<b>Normal</b>	32dB
<b>Eco-Mode</b>	27dB
<b>Net Without Stand (lbs)</b>	5.1
<b>Gross (lbs)</b>	8.8
<b>Net Without Stand (kg)</b>	2.3
<b>Gross (kg)</b>	4
<b>Packaging (in.)</b>	16.0 x 17.72 x 8.85
<b>Physical Without Stand (in.)</b>	12.44 x 8.98 x 4.08
<b>Packaging (mm)</b>	410 x 450 x 225
<b>Physical Without Stand (mm)</b>	316 x 228 x 103.7
<b>AV Control</b>	AMX Certified, ATEN Certified, Crestron Certified, PJ Link Certified
<b>Regulations</b>	CB, TUV-GS, UL/cUL, FCC (including ICES-003),CE, C-Tick, Mexico Energy test/Registration, EAC, UkrSEPRO/EMC DOC, UL COC, TUV- Mark (Argentina), PSB, KCC, KC, SASO, CCC, WEEE, RoHS, REACH, SVHC, ErP
<b>Package Contents</b>	PJD6552LW projector, power cable, VGA cable, remote control with laser (batteries included), Quick Start Guide, ViewSonic Wizard CD (with User Guide)
<b>Warranty</b>	*Refurbished. 30-day DOA policy for full refund, with a 90-day repair warranty on parts and labor.
<b>Recycle/Disposal</b>	Please dispose of in accordance with local, state or federal laws.
<b>Classification</b>	Discontinued

UPC: 766907951615



**Contact Sales**  
[ViewSonic.com](http://ViewSonic.com)

888.881.8781  
 email:  
[salesinfo@viewsonic.com](mailto:salesinfo@viewsonic.com)