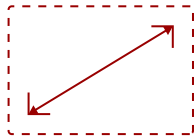


## VP2468\_H2 - 24" COLORPRO™ 1080P DUAL PACK HEAD-ONLY IPS MONITORS WITH DAISY CHAIN

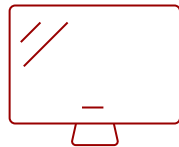
### Key Features

---

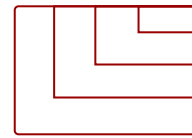
- 24 Inch Full HD (1920x1080p) IPS monitors with 60Hz refresh rate
- Sold as a dual pack without monitor stands for easy dual-screen installation
- Flicker-Free technology and Blue Light Filter for reduced eye fatigue
- 100% sRGB, EBU, SMPTE-C, Rec. 709, and DICOM-SIM color spaces and Delta E<2 accuracy
- The VP2468\_H2 supports laptops, PCs, Macs and more with USB, HDMI, DP (DaisyChain enabled) and mini DP inputs



24"  
**DISPLAY**



IPS  
**PANEL**



1920x1080  
**RESOLUTION**



### Product Description

---

If you're looking for professional monitors that deliver unmatched color accuracy, as well as easy deployment and mounting capabilities, look no further than the ViewSonic® VP2468\_H2. Sold as a dual pack of monitors without monitor stands, the VP2468\_H2 requires less packaging for a reduced environmental footprint, while still providing VESA-compatible mounting for easy dual-screen installation. With edge-to-edge SuperClear® IPS panels and one of the world's thinnest bezels, the VP2468\_H2 provides a sleek and frameless viewing experience ideal for dual-monitor setup. For simple, single-cable daisy chaining, these monitors are equipped with future-proof DisplayPort technology, in addition to HDMI ports. To ensure precise, uniform color, these monitors are factory calibrated to deliver an amazing Delta E<2 value. An integrated color uniformity function ensures consistent chromaticity across the screen, while a 14-bit 3D look-up table generates a stunningly smooth palette of 4.39 trillion colors. Add to that 6-axis color adjustment functionality, and this monitor provides the ultimate color processing capability for professional applications.

[Download the ColorPro brochure.](#)

### Specifications

---

<b>UPC</b>	766907895728
<b>Screen Size</b>	24"
<b>Viewable Area (in.)</b>	23.8
<b>Panel Type</b>	IPS
<b>Display Resolution</b>	1920 x 1080
<b>Static Contrast Ratio</b>	1,000:1
<b>Dynamic Contrast Ratio</b>	20,000,000:1
<b>Light Source</b>	LED
<b>Brightness</b>	250 cd/m2
<b>Colors</b>	16.7M
<b>Color Space Support</b>	6-bit+A-FRC
<b>Aspect Ratio</b>	16:9
<b>Response Time (Typical GTG)</b>	14ms
<b>Response Time (GTG w/OD)</b>	7ms
<b>Viewing Angles</b>	178° horizontal, 178° vertical
<b>Backlight Life (Hours)</b>	30,000
<b>Panel Surface</b>	Anti-glare, Hard coating (3H)
<b>PC Resolution (max)</b>	1920x1080
<b>USB Type A</b>	4
<b>USB Type B</b>	1
<b>HDMI 1.4 In</b>	2
<b>DisplayPort</b>	1
<b>DisplayPort Out</b>	1
<b>Mini DisplayPort</b>	1
<b>Eco Mode (Conserve)</b>	17W
<b>Eco Mode (optimized)</b>	19W
<b>Consumption (typical)</b>	22W
<b>Consumption (max)</b>	48W
<b>Voltage</b>	AC 100-240V (universal), 50-60Hz
<b>Stand-by</b>	0.3W
<b>Cable Organization</b>	No
<b>Kensington Lock Slot</b>	1
<b>Physical Controls</b>	Power, 1, 2, 3, 4, 5
<b>On Screen Display</b>	Input Select, Audio Adjust, ViewMode, Color Adjust, Manual Image Adjust, Setup Menu (See user guide for complete OSD functionality)
<b>Temperature</b>	32-104° F (0 - 40° C)

<b>Humidity (non-condensing)</b>	20-90%
<b>VESA Compatible</b>	100 x 100 mm
<b>Frequency Horizontal</b>	HDMI (v.1.4): 15 ~ 90KHz. DisplayPort (v1.2) & Mini DP (v1.2): 15 ~ 88KHz
<b>Frequency Vertical</b>	24 ~ 75Hz
<b>Digital Sync</b>	TMDS, PCI-E
<b>Regulations</b>	CB, CE, WEEE, RoHS Green, ErP, REACH, UL, FCC-B, Mexico CoC, EPEAT, ENERGY STAR, Mexico Energy
<b>Net (lbs)</b>	7.03
<b>Gross (lbs)</b>	22.16
<b>Net (kg)</b>	3.19
<b>Gross (kg)</b>	10.05
<b>Packaging (in.)</b>	25.0 x 16.5 x 10.0
<b>Physical (in.)</b>	21.2 x 12.2 x 1.9
<b>Packaging (mm)</b>	635 x 420 x 252
<b>Physical (mm)</b>	538.7 x 310.5 x 48.1
<b>Package Contents</b>	LCD Display x2, Power Cable x2, Mini DP to DP Cable x2, USB 3.0 UP Stream Cable (Type B to A) x2, Quick Start Guide, ViewSonic Wizard CD-ROM
<b>Recycle/Disposal</b>	Please dispose of in accordance with local, state or federal laws.
<b>Warranty</b>	Three-year limited warranty on parts, labor and backlight

UPC: 766907895728



## Contact Sales

[ViewSonic.com](http://ViewSonic.com)

888.881.8781

email: [salesinfo@viewsonic.com](mailto:salesinfo@viewsonic.com)