

VX2478-SMHD - 24" 1440P THIN-BEZEL IPS MONITOR WITH HDMI AND DISPLAYPORT

Key Features

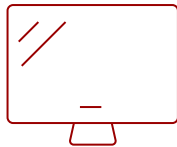
- Frameless Design
- SuperClear® IPS Panel Technology
- Wide Quad HD Resolution
- Versatile Connectivity
- Optimized View Settings



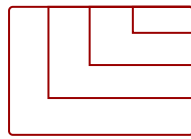
What's in the box.



24
DISPLAY



IPS
PANEL



2560 x 1440 @60Hz
RESOLUTION



*Power Cable varies by region

Product Description

Style and substance go hand-in-hand with the ViewSonic® VX2478-smhd 24" (23.8" viewable) WQHD monitor. SuperClear® IPS panel technology, wide viewing angles, and best-in-class screen performance deliver outstanding visual clarity perfect for office use, graphic design, and home entertainment. A premium ID includes a sleek edge-to-edge frameless screen, that when combined with vivid 2560x1440 resolution and dual speakers, deliver an immersive viewing experience for multimedia applications. Versatile HDMI, DisplayPort, and Mini DisplayPort inputs keep you connected to your favorite devices, while the modern, flush-mount frameless bezel design makes a standout statement in any home or office.

Specifications

More Information

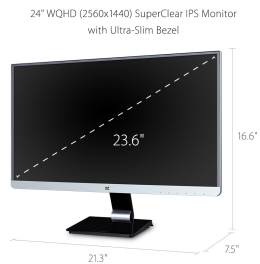
UPC

766907851212

Screen Size	24
Viewable Area (in.)	23.8
Panel Type	IPS
Display Resolution	2560 x 1440
Display Resolution	WQHD (2560x1440)
Static Contrast Ratio	1,000:1
Dynamic Contrast Ratio	80M:1
Light Source	LED
Brightness	300 cd/m2
Colors	16.7M
Aspect Ratio	16:9
Response Time (Typical GTG)	14ms
Response Time (GTG w/OD)	4ms
Viewing Angles	178° horizontal, 178° vertical
Backlight Life (Hours)	30,000
Panel Surface	Anti-glare, hard-coating (3H)
PC Resolution (max)	2560 x 1440 @60Hz
3.5mm Audio Out	1
HDMI 1.4 In	1
DisplayPort	1
Mini DisplayPort	1
Internal Speakers	2W (x2)
Eco Mode (Conserve)	20W
Eco Mode (optimized)	25W
Consumption (typical)	29W
Consumption (max)	35W
Voltage	AC 100-240V (universal), 50-60Hz
Stand-by	<0.5W
Cable Organization	No
Kensington Lock Slot	1
Physical Controls	GameMode, 1, 2, 3, 4, Power
On Screen Display	Auto Image Adjust, Contrast/Brightness, Input Select, Audio Adjust, Color Adjust, Information, Manual Image Adjust, Advanced Image Adjust, Setup Menu, Memory Recall (See user guide for complete OSD functionality)
Temperature	32-104° F (0 - 40° C)
Humidity (non-condensing)	20-90%
VESA Compatible	100 x 100 mm

Frequency Horizontal	15 ~ 120KHz
Frequency Vertical	24 ~ 85Hz
Analog Sync	PCI-E, TMDS
Tilt (Forward/Back)	6° / 15°
Regulations	cULus, FCC-B, ICES003, NRCAN, UL-MX-CoC, Mexico Energy, CE, EEL, WEEE, EAC, CEC
Net (lbs)	7.7
Net Without Stand (lbs)	6.1
Gross (lbs)	11.4
Net (kg)	3.5
Net Without Stand (kg)	2.8
Gross (kg)	5.2
Packaging (in.)	23.8 x 16.3 x 5.1
Physical (in.)	21.3 x 16.6 x 7.5
Physical Without Stand (in.)	21.3 x 12.9 x 1.6
Package Contents	LCD Display, Power Cable, Mini DP to DisplayPort Cable, Quick Start Guide, ViewSonic Wizard CD-ROM
Recycle/Disposal	Please dispose of in accordance with local, state or federal laws.
Warranty	Three-year limited warranty on parts and labor

UPC: 766907851212



Contact Sales
ViewSonic.com
 888.881.8781
 email:
salesinfo@viewsonic.com