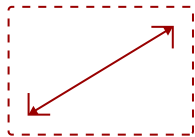
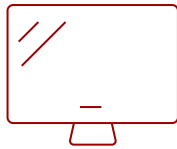


SD-T225-S

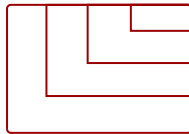
Key Features



22"
DISPLAY



PANEL



RESOLUTION



Product Description

The ViewSonic SD-T225 is a 22" (21.5" viewable) integrated thin client display that is perfect for any organization seeking cost-effective and flexible solutions for their virtual desktop computing needs. Equipped with a TI 1GHz ARI Cortex-A8 CPU and ARM Linux, the SD-T225 is optimized for all major remote networking protocols including Microsoft RDP with RemoteFX, Citrix HDX, and PCoIP for VMware View—making it a versatile virtualization solution with endless possibilities. With the additional DVI output, flexible support is provided for dual monitor productivity. The eco-friendly design with LED display also consumes up to 80% less energy than standard PCs. ViewSonic thin clients are the smart choice for your virtual desktop deployments.

Specifications

More Information

Energy Star Compliant

No

UPC

766907757811

CPU Processor Type	TI DM8148, Cortex A8
CPU Processor Speed	1.0 GHz
RAM	1GB
Memory Type	DDR3
Protocols	Citrix Receiver HDX 12.5.1, VMware PCoIP, RDP 7.1 with RemoteFX
Operating System	Linux
Static Contrast Ratio	1,000:1
Viewing Angles	170° horizontal, 160° vertical
Display Resolution	1920 x 1080
Viewable Area (in.)	21,5
Dynamic Contrast Ratio	20,000,000:1
Response Time (Typical GTG)	5ms
Light Source	LED
Brightness	250 cd/m2
Panel Surface	Anti-glare, hard-coating (3H)
Screen Size	22"
Analog Sync	Separate Sync
USB 2.0 Type A	4
VGA	1
DVI-D Out	1
Ethernet LAN (RJ45)	1
3.5mm Audio In	1
3.5mm Audio Out	1
3.5mm Mic In	1
Internal Speakers	2W (x2)
Voltage	AC 90-240V (universal), 50-60Hz
Physical Controls	Client, 2, Down, Up, 1, Power
Consumption (typical)	26W
Eco Mode (optimized)	20W
Eco Mode (Conserve)	18W
Storage Capacity	4GB
Pivot (Right/Left)	90° / 0°
Swivel	340°
Height Adjust	100 mm / 3.9 in
Tilt (Forward/Back)	5° / 25°

On Screen Display	Auto Image Adjust, Contrast/Brightness, Input Select, Audio Adjust, Color Adjust, Information, Manual Image Adjust, Setup Menu, Memory Recall(See user guide for complete OSD functionality)
Ethernet LAN	10/100/1000 Mbps
Temperature	32-95° F (0 - 35° C)
Humidity (non-condensing)	15-90%
Kensington Lock Slot	1
Frequency Horizontal	24~82kHz
Frequency Vertical	50~75Hz
Gross (kg)	6,3
Net (kg)	4,9
Net Without Stand (kg)	3,3
Packaging (in.)	22.48 x 15.35 x 6.73
Packaging (mm)	571 x 390 x 171
Physical (mm)	512.4 x 367.4 x 204.3
VESA Compatible	100 x 100 mm
Regulations	CB, FCC, cTUVus, CE, WEEE, RoHS Compliant, REACH Compliant
Package Contents	SD-T225 integrated thin client display, power cord, VGA cable, Quick Start Guide, ViewSonic Wizard CD (User Guide and software)
Recycle/Disposal	Please dispose of in accordance with local, state or federal laws.
Part #	SD-T225_BK_US0-S
Warranty	*Refurbished. 30-day DOA policy for full refund, with a 90-day repair warranty on parts and labor.
Classification	Discontinued
Physical (in.)	20.17 x 14.46 x 8.01
Physical Without Stand (in.)	20.17 x 11.96 x 2.1
Net (lbs)	10,8
Net Without Stand (lbs)	7,2
Gross (lbs)	13,9

UPC: 766907757811



Contact Sales

ViewSonic.com

888.881.8781

email:

salesinfo@viewsonic.com