

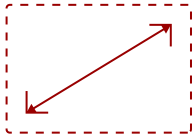
SD-T245-S

## Key Features

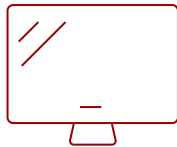
---

REFURBISHED

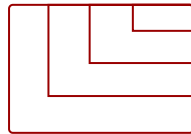
- All-in-one integrated thin client display with PC-like functionality
- TI 1GHz ARM® Cortex®-A8 CPU and ARM Linux OS
- Dual display productivity
- Ergonomic design for comfort and productivity
- Simplified and secure management



24  
DISPLAY



PANEL



RESOLUTION



## Product Description

---

The ViewSonic SD-T245 is a 24" (23.6" viewable) integrated thin client display that is perfect for any organization seeking cost-effective and flexible solutions for their virtual desktop computing needs. Equipped with a TI 1GHz ARM Cortex-A8 CPU and ARM Linux, the SD-T245 is optimized for all major remote networking protocols including Microsoft RDP with RemoteFX, Citrix HDX, and PCoIP for VMware View—making it a versatile virtualization solution with endless possibilities. With the additional DVI output, flexible support is provided for dual monitor productivity. The eco-friendly design with LED display also consumes up to 80% less energy than standard PCs. ViewSonic thin clients are the smart choice for your virtual desktop deployments.

## Specifications

---

More Information

Energy Star Compliant

No

UPC

766907757118

<b>CPU Processor Type</b>	TI DM8148, Cortex A8
<b>CPU Processor Speed</b>	1.0 GHz
<b>RAM</b>	1GB
<b>Memory Type</b>	DDR3
<b>Protocols</b>	Citrix Receiver H
<b>Operating System</b>	Linux
<b>Static Contrast Ratio</b>	1,000:1
<b>Viewing Angles</b>	170° horizontal, 160° vertical
<b>Display Resolution</b>	1920 x 1080
<b>Viewable Area (in.)</b>	23,6
<b>Dynamic Contrast Ratio</b>	20,000,000:1
<b>Response Time (Typical GTG)</b>	5ms
<b>Light Source</b>	LED
<b>Brightness</b>	300 cd/m2
<b>Panel Surface</b>	Anti-glare, hard-coating (3H)
<b>Screen Size</b>	24
<b>Analog Sync</b>	Separate Sync
<b>USB 2.0 Type A</b>	4
<b>VGA</b>	1
<b>DVI-D Out</b>	1
<b>Ethernet LAN (RJ45)</b>	1
<b>3.5mm Audio In</b>	1
<b>3.5mm Audio Out</b>	1
<b>3.5mm Mic In</b>	1
<b>Internal Speakers</b>	2W (x2)
<b>Voltage</b>	AC 90-240V (universal), 50-60Hz
<b>Physical Controls</b>	Client, 2, Down, Up, 1, Power
<b>Consumption (typical)</b>	29W
<b>Eco Mode (optimized)</b>	26W
<b>Eco Mode (Conserve)</b>	21W
<b>Storage Capacity</b>	4GB
<b>Pivot (Right/Left)</b>	90° / 0°
<b>Swivel</b>	340°
<b>Height Adjust</b>	100 mm / 3.9 in
<b>Tilt (Forward/Back)</b>	5° / 25°

<b>On Screen Display</b>	Auto Image Adjust, Contrast/Brightness, Input Select, Audio Adjust, Color Adjust, Information, Manual Image Adjust, Setup Menu, Memory Recall(See user guide for complete OSD functionality)
<b>Ethernet LAN</b>	10/100/1000 Mbps
<b>Temperature</b>	32-95° F (0 - 35° C)
<b>Humidity (non-condensing)</b>	15-90%
<b>Kensington Lock Slot</b>	1
<b>Frequency Horizontal</b>	24~82kHz
<b>Frequency Vertical</b>	50~75Hz
<b>Gross (kg)</b>	7,22
<b>Net (kg)</b>	5,4
<b>Net Without Stand (kg)</b>	3,8
<b>Packaging (in.)</b>	24.9 x 16.6 x 6.7
<b>Packaging (mm)</b>	632 x 421 x 170
<b>Physical (mm)</b>	566.4 x 382.7 x 204.3
<b>Physical Without Stand (mm)</b>	566.4 x 344.4 x 48
<b>VESA Compatible</b>	100 x 100 mm
<b>Regulations</b>	CB, FCC, cTUVus, CE, WEEE, RoHS Compliant, REACH Compliant
<b>Package Contents</b>	SD-T245 integrated thin client display, power cord, VGA cable, Quick Start Guide, ViewSonic Wizard CD (User Guide and software)
<b>Recycle/Disposal</b>	Please dispose of in accordance with local, state or federal laws.
<b>Part #</b>	SD-T245_BK_US0-S
<b>Warranty</b>	*Refurbished. 30-day DOA policy for full refund, with a 90-day repair warranty on parts and labor.
<b>Classification</b>	Discontinued
<b>Physical (in.)</b>	22.3 x 15.07 x 8.04
<b>Physical Without Stand (in.)</b>	22.3 x 13.56 x 1.9
<b>Net (lbs)</b>	11,91
<b>Net Without Stand (lbs)</b>	8,3
<b>Gross (lbs)</b>	15,92

UPC: 766907757118



**Contact Sales**  
[ViewSonic.com](http://ViewSonic.com)

888.881.8781  
 email:  
[salesinfo@viewsonic.com](mailto:salesinfo@viewsonic.com)