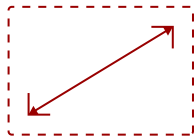


VX2457-MHD-S

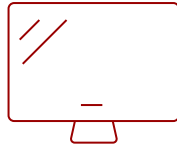
Key Features

REFURBISHED

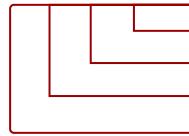
- Ultra-fast response time
- AMD FreeSync™ technology
- Low input lag
- Black stabilization for ultimate visibility
- Game Mode hotkey and user-customized settings



24
DISPLAY



TN
PANEL



Up to 1920x1080 non-interlaced
RESOLUTION



Product Description

The ViewSonic® VX2457-mhd is a 24" (23.6" viewable) Full HD price-performance monitor built for gaming and entertainment. Equipped with VESA Adaptive-Sync Technology, this monitor's variable refresh rate capabilities virtually eliminate screen tearing and stuttering for fluid game play during fast-paced action scenes. An ultra-fast 2ms response time and low input lag mode also provides smooth screen performance free from blurring or ghosting. For a game winning competitive edge, a Game Mode hot key optimizes gameplay for FPS, RTS and MOBA. On top of that, a black stabilization function helps you target enemies lurking in the dark, while enabling the monitor to maintain brilliantly rich colors and contrast for total immersion. Flexible connectivity options such as DisplayPort, HDMI, and VGA allow you to connect to your dedicated graphics card and gaming console. The VX2457-mhd features all the perks needed to dominate all your gaming and entertainment quests.

Specifications

More Information

UPC	766907872217
Screen Size	24
Viewable Area (in.)	23.6
Panel Type	TN
Display Resolution	1920 x 1080
Static Contrast Ratio	1,000:1
Dynamic Contrast Ratio	80M:1
Light Source	LED

Brightness	300 cd/m2
Colors	16.7M
Response Time (Typical GTG)	2ms
Viewing Angles	170° horizontal, 160° vertical
Backlight Life (Hours)	40,000
Panel Surface	3H Anti-glare, hard-coating
PC Resolution (max)	Up to 1920x1080 non-interlaced
Mac® Resolution (max)	Up to 1920x1080
3.5mm Audio In	1
3.5mm Audio Out	1
HDMI In	1
VGA	1
DisplayPort	1
Power in	3-pin plug (CEE22)
Internal Speakers	2-watt (x2)
Eco Mode (Conserve)	14W
Eco Mode (optimized)	18W
Consumption (typical)	24W
Consumption (max)	26W
Voltage	AC 100-240V (universal), 50-60Hz
Cable Organization	No
Kensington Lock Slot	1
Temperature	32-104° F (0 - 40° C)
Humidity (non-condensing)	20-90%
VESA Compatible	100 x 100 mm
Frequency Horizontal	24~84kHz
Frequency Vertical	47~75Hz
Analog Sync	Separate Sync, Composite Sync, Sync on Green, TMDS, PCI-E
Tilt (Forward/Back)	5° / 23°
Gross (lbs)	12.3
Net (kg)	4.1
Net Without Stand (kg)	3.6
Gross (kg)	5.6
Packaging (in.)	24.4 x 19.5 x 4.9
Physical (in.)	23.2 x 16.6 x 9.0
Physical Without Stand (in.)	23.2 x 13.9 x 1.8

Packaging (mm)	619 x 495 x 125
Physical (mm)	558.7 x 422.4 x 229.7
Physical Without Stand (mm)	558.7 x 352.6 x 45.5
Regulations	cULus, FCC-B, ICES003, Energy Star, Mexico-CoC, Mexico Energy, ST mark, WEEE, RoHS Green BOM & RoHS DoC, CE EMC, CB, REACH SVHC List & DoC, EEL, ErP, EAC, UkrSEPRO + DoC
Package Contents	VX2457-mhd monitor, Power cable, Audio cable, VGA cable, HDMI cable, Quick Start Guide
Recycle/Disposal	Please dispose of in accordance with local, state or federal laws.
Warranty	*Refurbished. 30-day DOA policy for full refund, with a 90-day repair warranty on parts and labor.
Classification	Discontinued

UPC: 766907872217



Contact Sales

ViewSonic.com

888.881.8781

email: salesinfo@viewsonic.com