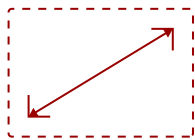


VG2439SMH-S

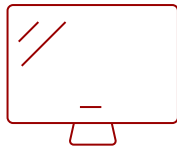
Key Features

REFURBISHED

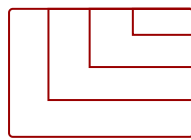
- SuperClear® MVA panel technology for stunning color performance and wide-angle viewing
- Future-proof HDMI, DisplayPort, VGA, and USB inputs
- Ergonomic tilt, pivot, swivel and height-adjustable design for maximum comfort and productivity
- Exclusive ViewMode technology delivers superior color rendering and intuitive settings
- Flicker-free and Blue Light Filter technology for more comfortable viewing.
- ENERGY STAR Certification



24
DISPLAY



MVA
PANEL



1920 x 1080
RESOLUTION



Product Description

The ViewSonic® VG2439Smh is a 24" (23.6" viewable) Full HD LED multimedia monitor with future-proof connectivity and full ergonomic functionality ideal for corporate, government and education. With SuperClear® MVA panel technology for wide-angle viewing, and 20M:1 dynamic contrast ratio, this monitor delivers incredibly sharp images and video playback. Integrated with HDMI, DisplayPort, VGA and 2 USB ports, the VG2439Smh allows flexible connection to PC systems, laptops and other multimedia peripheral devices. ViewSonic's exclusive ViewMode provides intuitive presets to deliver optimized screen performance in different applications. In addition, Flicker-Free and Blue Light Filter technology help to eliminate eye strain from extended viewing periods. The LED backlight design makes this display Energy Star certified.

Specifications

More Information

UPC	766907871319
Screen Size	24
Viewable Area (in.)	23.6
Panel Type	MVA
Display Resolution	1920 x 1080

Dynamic Contrast Ratio	20,000,000:1
Light Source	LED
Brightness	250 cd/m ²
Colors	16.7M
Response Time (Typical GTG)	5ms
Viewing Angles	178° horizontal, 178° vertical
Backlight Life (Hours)	40,000
Panel Surface	3H Anti-glare, hard-coating
PC Resolution (max)	1920 x 1080
Mac® Resolution (max)	1920 x 1080
USB 2.0 Type A	2
USB 2.0 Type B	1
3.5mm Audio In	1
3.5mm Audio Out	1
HDMI In	1
VGA	1
DisplayPort	1
Internal Speakers	2-watt (x2)
Eco Mode (Conserve)	16W
Eco Mode (optimized)	19W
Consumption (typical)	23W
Consumption (max)	36W
Voltage	AC 100-240V (universal), 50-60Hz
Cable Organization	No
Kensington Lock Slot	1
Physical Controls	1, 2, Down, Up, Power
On Screen Display	Auto Image Adjust, Contrast/Brightness, Input Select, Audio Adjust, Color Adjust, Information, Manual Image Adjust, Setup Menu, Memory Recall (See user guide for complete OSD functionality)
Temperature	32-104° F (0 - 40° C)
Humidity (non-condensing)	20-90%
VESA Compatible	100 x 100 mm
Frequency Horizontal	24~82kHz
Frequency Vertical	50~75Hz
Analog Sync	Separate Sync, Composite Sync, Sync on Green
Height Adjust	135 mm / 5.3 in
Swivel	360°

Pivot (Right/Left)	90° / 0°
Net (lbs)	11.4
Net Without Stand (lbs)	8.2
Gross (lbs)	15.3
Net (kg)	5.2
Net Without Stand (kg)	3.7
Gross (kg)	6.9
Packaging (in.)	25 x 20 x 7.5
Physical (in.)	22.1 x 17.1 x 9.4
Physical Without Stand (in.)	22.1 x 13.1 x 2.3
Packaging (mm)	634 x 508 x 190
Physical (mm)	560.3 x 435.2 x 239.6
Physical Without Stand (mm)	560.3 x 332.7 x 58.2
Regulations	WEEE, RoHS, CE, CB, WHQL, UL/cUL, FCC-B, ENERGY STAR 7.0, REACH SVHC list & DoC, EEL, Mexico Energy, UkrSEPRO+Doc, ErP,
Package Contents	VG2439Smh monitor, Power cable, VGA cable, DisplayPort cable, Audio cable, USB cable, Quick Start Guide, ViewSonic Wizard CD (User Guide)
Recycle/Disposal	Please dispose of in accordance with local, state or federal laws.
Warranty	*Refurbished. 30-day DOA policy for full refund, with a 90-day repair warranty on parts and labor.
Classification	Discontinued, Refurbished

UPC: 766907871319



Contact Sales
ViewSonic.com

888.881.8781 ☎
 email:
salesinfo@viewsonic.com