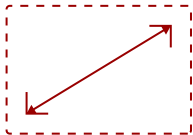


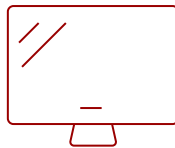
CDP4635

Key Features

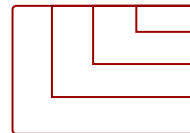
- DISCONTINUED
- 46" full HD 1920x1080p resolution
- Thin 19.5mm bezel width
- Designed for 24/7 applications



46"
DISPLAY



PANEL



RESOLUTION

Product Description

****This product has been replaced by [New Product](#).***

ViewSonic's new CDP4635 Full HD Commercial display features a FHD 1920x1080 panel with 4000:1 contrast and Intel's Open Pluggable Specification (OPS) for applications requiring an integrated media player. Additional features include versatile inputs - HDMI, DVI, VGA, S video and composite, YPbPr and built in 10W x 2 speakers. The CDP4635 will support up to a 5x5 display video wall with internal clock and scheduler. RS232 daisy chain and RJ45 are provided for automated remote control.

Specifications

More Information

UPC	766907631012
Internal Speakers	10W (x2)
HDMI In	1
Humidity (non-condensing)	20-80%

Net (lbs)	58.1
Net Without Stand (lbs)	57.3
Gross (lbs)	68.3
Net (kg)	26.5
Net Without Stand (kg)	22.6
Gross (kg)	31
VESA Compatible	400 x 400 mm
Package Contents	LCD display, power cable, remote control with batteries, User Guide CD
Regulations	FCC, ICES003, UL, cUL, CE, CB, C-Tick, BSM
Classification	Discontinued
Screen Size	46"
Display Resolution	1920 x 1080
Aspect Ratio	16:9
Static Contrast Ratio	4,000:1
Backlight Life (Hours)	50,000
Brightness	400 cd/m2
Response Time (Typical GTG)	11ms
Viewing Angles	178° horizontal, 178° vertical
Panel Surface	Anti-glare, Hard coating 3H

UPC: 766907631012



Contact Sales
ViewSonic.com
 888.881.8781
 email:
salesinfo@viewsonic.com