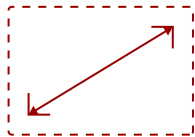


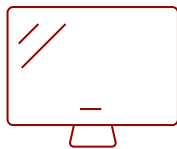
CDP4237-L

Key Features

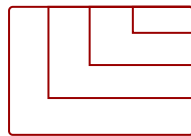
- [DISCONTINUED]
- 42" LED Full HD 1920x1080p resolution - 1300:1 contrast / 50,000:1 DCR
- 120Hz (MEMC) double frame rate processing
- Energy saving LED technology



42"
DISPLAY



PANEL



RESOLUTION



Product Description

The ViewSonic® CDP4237-L commercial display features Full HD 1920x1080p IPS panel technology, fast 120Hz response, and 50,000:1 dynamic contrast ratio. Slim ID design, combined with 27.6mm bezel width makes the CDP4237-L an ideal large screen solution for your digital signage application. Additional features include versatile inputs - HDMI, DVI, VGA, YPbPr and built-in media player utilizing USB storage. Other key features include up to 5x5 tiling for video walls and VGA and DVI loop through support.

Specifications

More Information

UPC	766907628012
Internal Speakers	10W (x2)
HDMI In	1

VGA	1
Consumption (typical)	115W
Humidity (non-condensing)	10-80%
Gross (lbs)	34.8
Gross (kg)	15.8
VESA Compatible	400 x 400 mm
Recycle/Disposal	Please dispose of in accordance with local, state or federal laws.
Package Contents	CDP4237-L display, power cable, remote control with batteries, User Guide CD
Regulations	FCC, ICES003, UL, cUL, CE, CB, PSB/C-Tick, GOST-R
Classification	Discontinued
Screen Size	42"
Light Source	LED
Display Resolution	1920 x 1080
Aspect Ratio	16:9
Static Contrast Ratio	1,300:1
Dynamic Contrast Ratio	50,000:1
Backlight Life (Hours)	50,000
Brightness	450 cd/m2
Response Time (Typical GTG)	12ms
Viewing Angles	178° horizontal, 178° vertical
Panel Surface	Anti-glare, Hard coating 3H

UPC: 766907628012



Contact Sales

ViewSonic.com

888.881.8781

email:

salesinfo@viewsonic.com