

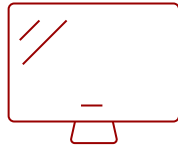
VIEWSONIC 24" 1080P IPS DUAL PACK HEAD-ONLY MONITORS WITH 120HZ, VARIABLE REFRESH RATE, HDMI, DP, AND VGA | VA2456A-MHD_H2

Key Features

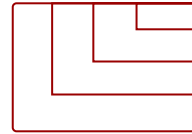
- Versatile Monitors: 24 Inch Full HD (1920x1080p) IPS monitor with thin bezels and 120Hz refresh rate
- Two Monitors: Sold as a dual pack without monitor stands for easy dual-screen installation
- Accurate From All Angles: Enjoy accurate and vivid colors with consistent levels of brightness with SuperClear IPS technology
- Enhanced Viewing Comfort: Flicker-Free technology and Blue Light Filter for reduced eye fatigue
- Optimized View Settings: Offers "Game," "Movie," "Web," "Text," and "Mono" presets
- Flexible Connectivity: The VA2456A-MHD_H2 supports laptops, PCs, Macs and more with HDMI, DisplayPort and VGA inputs



24"
DISPLAY



IPS
PANEL



1920x1080
RESOLUTION



Product Description

Skyrocket productivity and optimize your workflow with the ViewSonic® VA2456-MHD_H2 dual monitor pack. Featuring hassle-free installation and long-term reliability, this dual 24" monitor solution substantially lowers your total cost of ownership. And with biodegradable packaging and VESA-compatible mounting, you can easily cut down on waste and do your part to contribute to a greener planet. Featuring a 3-sided ultra-thin bezel, the VA2456-MHD_H2 provides a seamless multi-monitor viewing experience that dramatically increases visual clarity and helps to reduce eye strain.

And with SuperClear® IPS panel technology, you can enjoy wide-angle viewing and vibrant, true-to-life colors. Connect your favorite devices with ease using the HDMI, DisplayPort, and VGA inputs. Upgrade your setup and enhance productivity with the ViewSonic VA2456-MHD_H2 dual monitor pack today.

Specifications

More Information

UPC	766907029628
Screen Size	24"
Viewable Area (in.)	23.8
Panel Type	IPS
Display Resolution	1920 x 1080
Display Resolution	Full HD (1920x1080)
Static Contrast Ratio	1,500:1

Dynamic Contrast Ratio	50,000,000:1
Light Source	LED
Brightness	250 cd/m ²
Colors	16.7M
Color Space Support	6 bit + FRC
Aspect Ratio	16:9
Response Time (Typical GTG)	4ms
Response Time (MPRT)	1ms
Viewing Angles	178° horizontal, 178° vertical
Backlight Life (Hours)	30,000
Panel Surface	Anti-Glare type, Hard-coating (3H), Haze 25%
Refresh Rate	120Hz
PC Resolution (max)	1920x1080
Mac® Resolution (max)	1920x1080
3.5mm Audio In	1
3.5mm Audio Out	1
VGA	1
HDMI 1.4 In	1
DisplayPort	1
Internal Speakers	2W (x2)
Eco Mode (Conserve)	14.5w
Eco Mode (optimized)	17.5w
Consumption (typical)	19.5w
Consumption (max)	27w
Voltage	100-240 VAC
Stand-by	.3w
Power Supply	Internal
Cable Organization	No
Kensington Lock Slot	1
Physical Controls	U, R, D, L, EN (power)
On Screen Display	Input Select, Audio Adjust, ViewMode, Color Adjust, Manual Image Adjust, Setup Menu
Temperature	32-104° F (0 - 40° C)
Humidity (non-condensing)	20-90%
VESA Compatible	100 x 100 mm
Frequency Horizontal	VGA = 24 ~ 86 KHz / HDMI & DisplayPort = 30 ~ 135 KHz
Frequency Vertical	VGA = 48 ~ 75 Hz / HDMI & DisplayPort = 48 ~ 120 Hz

Regulations	cTUVus, FCC-B, ICES003, Energy Star 8.0, EPEAT Silver, CEC, RoHS, WEEE
Net Without Stand (lbs)	11.9
Gross (lbs)	18.3
Net Without Stand (kg)	5.4
Gross (kg)	8.3
Packaging (in.)	24.1 " (W) x 16.3 " (H) x 7.8 " (D)
Physical Without Stand (in.)	21.2 " (W) x 12.4 " (H) x 2 " (D)
Packaging (mm)	611 mm (W) x 414 mm (H) x 199 mm (D)
Physical Without Stand (mm)	539.2 mm (W) x 314.6 mm (H) x 49.9 mm (D)
Package Contents	LCD Display x2, Power Cable x2, HDMI Cable, DisplayPort Cable, Quick Start Guide x2
Recycle/Disposal	Please dispose of in accordance with local, state or federal laws.
Warranty	Three-year limited warranty on parts, labor and backlight

UPC: 766907029628



Contact Sales

ViewSonic.com

888.881.8781

email: salesinfo@viewsonic.com