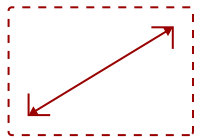
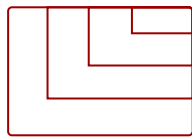
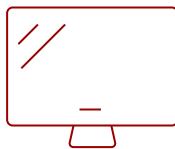


PA700S - 4500 LUMENS SVGA HIGH BRIGHTNESS PROJECTOR WITH DUAL HDMI, USB, VGA, RS232

Key Features



30 - 300 in. / 0.76 - 7.62 m
DISPLAY **PANEL**



VGA(640 x 480) to FullHD(1920 x 1080)
RESOLUTION



Product Description

Put your presentations in the best light with the ViewSonic® PA700S SVGA projector. This state-of-the-art high brightness projector combines a powerful 4,500 ANSI lumens and SVGA resolution for stunning images on a 300" screen. Dual HDMI ports empower you to seamlessly switch between different devices while a USB Type-A port lets you connect wireless dongles directly into the projector. And with easy USB software updates, you can effortlessly keep your projector up-to-date with the latest features. Whether you consider the PA700S a business projector or an education projector, this powerful device is the perfect presentation tool for any environment.

Specifications

UPC	766907023343
Light Source	DLP Lamp
Display Resolution	SVGA (800x600)
Display Resolution	800 x 600
Brightness (Lumens)	4,500 ANSI
Screen Size	30 - 300 in. / 0.76 - 7.62 m
Throw Distance	1.18m-13.17m (100"@3.94m)
Throw Ratio	1.94-2.16
Keystone	Vertical (+/- 40°)
Lens	1.1x optical zoom
Light Source (watt)	240
Light Source Life, Normal (hours)	4000
Light Source Life, Dynamic Eco-Mode (hours)	12000
Color Depth	1.07 Billion Colors
Dynamic Contrast Ratio	22,000:1
Aspect Ratio	4:3
Input Lag	37ms
Frequency Horizontal	15K~102KHz
Frequency Vertical	23-120Hz
PC Resolution (max)	VGA(640 x 480) to FullHD(1920 x 1080)
Mac® Resolution (max)	480i, 480p, 576i, 576p, 720p, 1080i, 1080p
USB 2.0 Type A	1
3.5mm Audio Out	1
3.5mm Audio In	1
Control (RS232)	1
HDMI 1.4 (with HDCP 1.4)	2
VGA In	1
VGA Out	1
Internal Speakers	3W (x1)
Voltage	100-240V+/- 10%, 50/60Hz AC
Consumption (typical)	256W
Stand-by	<0.5W
Physical Controls	Keypad, Power key
On Screen Display	Display, Image, Power Management, Basic, Advanced, System, Information (See user guide for full OSD functionality)
Temperature	32-104° F (0 - 40° C)

Kensington Lock Slot	1
Net (lbs)	6
Gross (lbs)	8.4
Net (kg)	2.7
Gross (kg)	3.8
Packaging (in.)	15.7 x 13.3 x 6.6
Physical (in.)	12.2 x 9.2 x 4.5
Packaging (mm)	400 x 337 x 168
Physical (mm)	309 x 234 x 115
Regulations	cTUVus
Package Contents	Projector, power cable, remote control, Quick Start Guide
Warranty	*Refurbished. 30-day DOA policy for full refund, with a 90-day repair warranty on parts and labor.
Recycle/Disposal	Please dispose of in accordance with local, state or federal laws.

UPC: 766907023343



4,500 ANSI LUMENS
and SVGA resolution



CRYSTAL CLEAR IMAGES
in bright environments



**IMAGE SIZE AND
PROJECTOR DISTANCE**

Contact Sales
ViewSonic.com

888.881.8781
email:
salesinfo@viewsonic.com