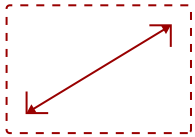
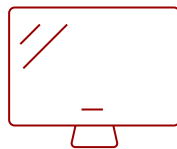


PA504W - 4000 LUMENS WXGA HIGH BRIGHTNESS PROJECTOR WITH LAN CONTROL, DUAL HDMI, .65" DMD CHIP

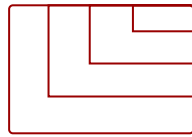
Key Features



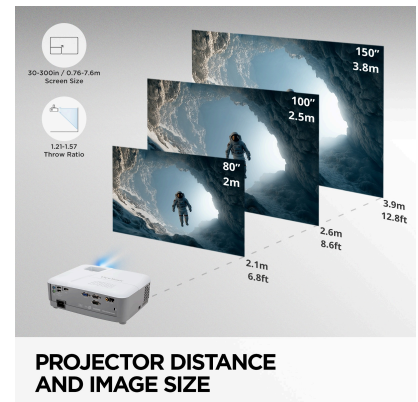
30 - 300 in. / 0.76 - 7.62 m
DISPLAY



PANEL



VGA(640 x 480) to FullHD(1920 x 1080)
RESOLUTION



Product Description

Upgrade your projector setup with the ViewSonic® PA504W high-brightness projector. Featuring a versatile 1.21 – 1.57 throw ratio, this projector can be easily installed onto most existing projector mounts. Plus, with 4,000 ANSI lumens of brightness, audiences can enjoy stunning clarity – even in environments with strong ambient lighting. A Texas Instruments .65" DMD chip delivers a high native contrast ratio to make images clearer and more compelling. Each PA504W projector features a sealed optical engine that reduces maintenance as well as state-of-the-art DLP® technology that enables users to enjoy consistent colors and enhanced clarity over an extended period. Connect your projector to Crestron, AMX, PJ Link, ATEN, Extron or other LAN control systems for streamlined device management. Dual HDMI ports enable users to easily switch between content sources. Add an optional ViewSonic WPD-700 Wireless Screen Casting Kit to the projector's USB-A port to make casting content both faster and cable-free.

Specifications

	More Information
UPC	766907028935
Light Source	DLP Lamp
Display Resolution	WXGA (1280x800)
Display Resolution	1280 x 800
Brightness (Lumens)	4,000 ANSI
Screen Size	30 - 300 in. / 0.76 - 7.62 m
Throw Distance	2.5-33.3ft (100"@8.56ft)
Throw Ratio	1.21-1.57
Keystone	Vertical (+/- 40°)
Lens	1.3x optical zoom
Light Source Life, Normal (hours)	6000
Light Source Life, Dynamic Eco-Mode (hours)	15000
Color Depth	1.07B Color (R/G/B 10bit)
Dynamic Contrast Ratio	22,000:1
Aspect Ratio	16:10
Frequency Horizontal	15K~102KHz
Frequency Vertical	23~120MHz
PC Resolution (max)	VGA(640 x 480) to FullHD(1920 x 1080)
Mac® Resolution (max)	480i, 480p, 576i, 576p, 720p, 1080i, 1080p
USB 2.0 Type A	1
Ethernet LAN (RJ45)	1
3.5mm Audio Out	1
3.5mm Audio In	1
Control (RS232)	1
HDMI 1.4 (with HDCP 1.4)	2
VGA In	1
VGA Out	1
Composite RCA Video In	1
Internal Speakers	10W (x1)
Voltage	100-240V+/- 10%, 50/60Hz AC
Consumption (typical)	255W
Stand-by	<0.5W
Physical Controls	Keypad, Power key

On Screen Display	Display, Image, Power Management, Basic, Advanced, System, Information (See user guide for full OSD functionality)
Temperature	32-104° F (0 - 40° C)
Kensington Lock Slot	1
Net (lbs)	5.14
Gross (lbs)	7.81
Net (kg)	2.33
Gross (kg)	3.54
Packaging (in.)	16.3 x 6.6 x 11.7
Physical (in.)	11.6 x 8.5 x 4.3
Packaging (mm)	415.0 x 168.0 x 297.0
Physical (mm)	294.0 x 218.0 x 110.0
Regulations	cTUVus
Package Contents	PA503HD, power cable, remote control, Quick Start Guide,
Warranty	*Refurbished. 30-day DOA policy for full refund, with a 90-day repair warranty on parts and labor.
Recycle/Disposal	Please dispose of in accordance with local, state or federal laws.

UPC: 766907028935



STUNNING IN ANY ENVIRONMENT
4,000 ANSI Lumens



EFFORTLESS SETUP

Contact Sales
ViewSonic.com

888.881.8781
email:
salesinfo@viewsonic.com