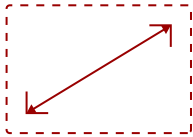
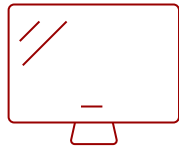


PX701HDH - 1080P HOME THEATER PROJECTOR WITH 3500 LUMENS AND POWERED USB

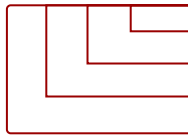
Key Features



30 - 300 in. / 0.76 - 7.62 m
DISPLAY



PANEL



1920 x 1200
RESOLUTION



Product Description

Ideal for both home entertainment and office use, the ViewSonic® PX701HDH delivers stunning Full HD images for versatile projection. With 3,500 ANSI lumens, this high-brightness projector delivers clear pictures even in brightly lit rooms. What's more, an energy-saving SuperEco™ feature reduces power consumption and extends the lamp life by up to 20,000 hours,* effectively reducing lamp replacement and maintenance costs. A cloud-based vColorTuner™ feature allows users to customize and save color profiles, while exclusive SuperColor™ technology offers a wide color gamut for beautiful image production in nearly any environment. Dual HDMI inputs and USB power supply delivers flexible connectivity options for gaming, movies, wireless dongles, and more.

Specifications

	More Information
UPC	766907018691
Light Source	DLP Lamp
Display Resolution	Full HD (1920x1080)
Display Resolution	1920 x 1080
Brightness (Lumens)	3,500 ANSI
Screen Size	30 - 300 in. / 0.76 - 7.62 m
Throw Distance	1m~10.96m (100"@3.32m)
Throw Ratio	1.5-1.65
Keystone	Vertical (+/- 40°)
Lens	1.1x optical zoom
Light Source (watt)	203
Light Source Life, Normal (hours)	5000
Light Source Life, Dynamic Eco-Mode (hours)	20000
Color Depth	1.07 Billion Colors
Dynamic Contrast Ratio	12,000:1
Aspect Ratio	16:9
Input Lag	37ms
Frequency Horizontal	15K-102KHz
Frequency Vertical	23-120Hz
PC Resolution (max)	1920 x 1200
PC Resolution (min)	640 x 480
Mac® Resolution (max)	1920 x 1200
Mac® Resolution (min)	640 x 480
USB 2.0 Type A	1
3.5mm Audio Out	1
3.5mm Audio In	1
Control (RS232)	1
HDMI 1.4 (with HDCP 1.4)	2
Internal Speakers	10W (x1)
Voltage	100-240V+/- 10%, 50/60Hz AC
Consumption (typical)	300W
Stand-by	<0.5W
Physical Controls	Keypad, Power key

On Screen Display	Display, Image, Power Management, Basic, Advanced, System, Information (See user guide for full OSD functionality)
Temperature	32-95° F (0 - 35° C)
Kensington Lock Slot	1
Net (lbs)	5.7
Gross (lbs)	8.3
Net (kg)	2.6
Gross (kg)	3.8
Packaging (in.)	16.3 x 6.6 x 11.7
Physical (in.)	12.2 x 4.4 x 8.7
Packaging (mm)	415.0 x 168.0 x 297.0
Physical (mm)	312.0 x 108.0 x 222.0
Regulations	cTUVus
Package Contents	PX701HDH projector, power cable, remote control, Quick Start Guide
Warranty	*Refurbished. 30-day DOA policy for full refund, with a 90-day repair warranty on parts and labor.
Recycle/Disposal	Please dispose of in accordance with local, state or federal laws.

UPC: 766907018691



Contact Sales
ViewSonic.com
 888.881.8781
 email:
salesinfo@viewsonic.com