

## PA503S - 4000 LUMENS SVGA HOME WITH HDMI AND VERTICAL KEYSTONE

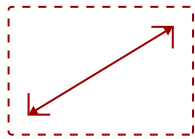
### Key Features

REFURBISHED

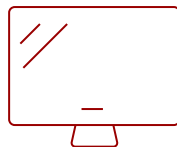
- High brightness 4000 Lumens SVGA projector with advanced visual features
- 1.1x optical zoom, 40 degree vertical keystone for flexible setup
- A low 16ms input latency provides faster frame-by-frame action for smooth images without delay
- SuperEco Mode allows the lamp to shine bright for up to 15,000 hours
- Supports most media players, PCs, Macs, and mobile devices with inputs such as HDMI, VGA, mini USB



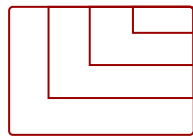
Flexible connectivity for your favorite devices.



30 - 300 in. / 0.76 - 7.62 m  
**DISPLAY**



**PANEL**



VGA (640 x 480) to WUXGA\_RB (1920 x 1200)  
**RESOLUTION**



1.1x optical zoom lens  
15,000 hours lamp life (SuperEco Mode)



1x HDMI 1.4  
2x VGA  
1x RS232  
1x Video In  
1x Audio In/Out  
1x Monitor Out  
1x USB mini Type B

### Product Description

The ViewSonic® PA503S price-performance projector features 4,000 lumens, native SVGA 800 x 600 resolution, and intuitive, user-friendly design. Exclusive SuperColor™ technology offers a wide color gamut for beautiful image production in nearly any environment. The PA503S also features extensive connectivity including HDMI, 2 x VGA, VGA out, Composite Video and audio in/out. An energy-saving SuperEco™ feature reduces power consumption and extends the lamp life by up to 15,000 hours. With advanced audio-visual features, flexible connectivity options, and an affordable price, the PA503S is ideal for use in education and small business environments.

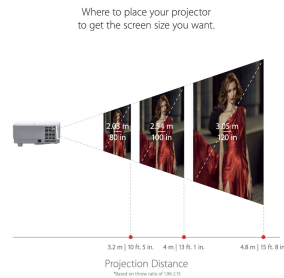
\*Energy consumption and lamp life may vary based on actual usage and other factors.

### Specifications

<b>UPC</b>	766907942415
<b>Light Source</b>	DLP Lamp
<b>Display Resolution</b>	SVGA (800x600)
<b>Display Resolution</b>	800 x 600
<b>Brightness (Lumens)</b>	4,000 ANSI
<b>Screen Size</b>	30 - 300 in. / 0.76 - 7.62 m
<b>Throw Distance</b>	3.9 - 43 ft / 1.19 - 13.11 m
<b>Throw Ratio</b>	1.96 ~ 2.15
<b>Keystone</b>	Vertical (+/- 40°)
<b>Lens</b>	1.1x optical zoom
<b>Light Source (watt)</b>	190
<b>Light Source Life, Normal (hours)</b>	5000
<b>Light Source Life, Dynamic Eco-Mode (hours)</b>	15000
<b>Color Depth</b>	1.07B Color (R/G/B 10bit)
<b>Dynamic Contrast Ratio</b>	22,000:1
<b>Aspect Ratio</b>	4:3
<b>Input Lag</b>	37ms
<b>Frequency Horizontal</b>	15K~102KHz
<b>Frequency Vertical</b>	23~120Hz
<b>PC Resolution (max)</b>	VGA (640 x 480) to WUXGA_RB (1920 x 1200)
<b>Mac® Resolution (max)</b>	VGA (640 x 480) to WUXGA_RB (1920 x 1200)
<b>Mini USB Type B</b>	1
<b>3.5mm Audio Out</b>	1
<b>3.5mm Audio In</b>	1
<b>Control (RS232)</b>	1
<b>HDMI 1.4 In</b>	1
<b>VGA In</b>	2
<b>VGA Out</b>	1
<b>Composite RCA Video In</b>	1
<b>Internal Speakers</b>	2W (x1)
<b>Voltage</b>	AC 100-240V (universal), 50-60Hz
<b>Consumption (typical)</b>	260W
<b>Stand-by</b>	<0.5W
<b>Temperature</b>	32-104° F (0 - 40° C)
<b>Net (lbs)</b>	4.9
<b>Gross (lbs)</b>	7.1

<b>Net (kg)</b>	2.2
<b>Gross (kg)</b>	3.2
<b>Packaging (in.)</b>	14.4 x 7.4 x 11.8
<b>Physical (in.)</b>	11.6 x 4.3 x 8.6
<b>Packaging (mm)</b>	365 x 188 x 300
<b>Physical (mm)</b>	294 x 110 x 218
<b>Regulations</b>	FCC (including ICES-003), cTUVus
<b>Package Contents</b>	PA503S projector, power cable, VGA cable, remote control, Quick Start Guide
<b>Warranty</b>	*Refurbished. 30-day DOA policy for full refund, with a 90-day repair warranty on parts and labor.
<b>Recycle/Disposal</b>	Please dispose of in accordance with local, state or federal laws.

UPC: 766907942415



**Contact Sales**  
[ViewSonic.com](http://ViewSonic.com)  
 888.881.8781  
 email:  
[salesinfo@viewsonic.com](mailto:salesinfo@viewsonic.com)