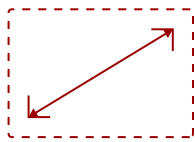


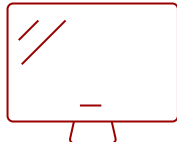
VA2055SM - 20" 1080P LED MONITOR WITH VGA, DVI AND ENHANCED VIEWING COMFORT

Key Features

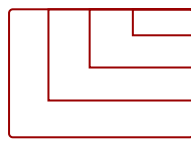
- 20 Inch Full HD (1920x1080p) LED monitor with 60Hz refresh rate
- Flicker-Free technology and Blue Light Filter for reduced eye fatigue
- Optimized view settings offer "Game," "Movie," "Web," "Text," and "Mono" presets
- The VA2055SM supports laptops, PCs, Macs and more with DVI-D, and VGA inputs



20
DISPLAY



MVA
PANEL



1920 x 1080
RESOLUTION



Product Description

The ViewSonic® VA2055Sm features a 20" (19.5" viewable) Full HD SuperClear® MVA widescreen panel with integrated dual 2W speakers. The monitor offers 1920x1080 resolution, 3,000:1 Contrast Ratio, VGA & DVI inputs, and a VESA-compatible mount design. In addition, Flicker-Free and Blue Light Filter technology help to eliminate eye strain from extended viewing periods. ViewSonic's exclusive ViewMode™ provides intuitive presets to deliver optimized screen performance in different applications. Lastly, with a 3-year limited warranty, one of the industry's best pixel performance policies, ENERGY STAR and EPEAT certification, and an energy-saving Eco-mode, the VA2055Sm is a great long-term investment for any of your entertainment or office needs.

Specifications

[More Information](#)

UPC

766907806311

Screen Size	20
Viewable Area (in.)	19.5
Panel Type	MVA
Display Resolution	1920 x 1080
Static Contrast Ratio	3,000:1
Light Source	LED
Brightness	250 cd/m ²
Colors	16.7M
Aspect Ratio	16:9
Response Time (Typical GTG)	25ms
Viewing Angles	178° horizontal, 178° vertical
Backlight Life (Hours)	40,000
Panel Surface	3H Anti-glare, hard-coating
PC Resolution (max)	1920 x 1080
Mac® Resolution (max)	1920 x 1080
3.5mm Audio In	1
3.5mm Audio Out	1
VGA	1
DVI-D	1
Internal Speakers	2-watt (x2)
Eco Mode (Conserve)	14W
Eco Mode (optimized)	18W
Consumption (typical)	22W
Consumption (max)	35W
Voltage	AC 100-240V (universal), 50-60Hz
Cable Organization	No
Kensington Lock Slot	1
Physical Controls	1, 2, Down, Up, Power
On Screen Display	Auto Image Adjust, Contrast/Brightness, Input Select, Audio Adjust, Color Adjust, Information, Manual Image Adjust, Setup Menu, Memory Recall (See user guide for complete OSD functionality)
Humidity (non-condensing)	20-90%
VESA Compatible	100 x 100 mm
Frequency Horizontal	24~82kHz
Frequency Vertical	50~75Hz
Analog Sync	Separate Sync, Composite Sync, Sync on Green
Tilt (Forward/Back)	6° / 22°

Regulations	US NRTL w/CA (cULus/cTUVus/cETLus/cBVus), FCC-Bw/ ICES003, ENERGY STAR, Mexico, Mexico Energy,
Net (lbs)	6.2
Net Without Stand (lbs)	5.4
Gross (lbs)	8.8
Net (kg)	2.8
Net Without Stand (kg)	2.5
Gross (kg)	4.0
Packaging (in.)	20.9 x 15.9 x 4.3
Physical (in.)	18.6 x 13.7 x 8.3
Physical Without Stand (in.)	18.6 x 11.3 x 1.9
Packaging (mm)	531 x 405 x 110
Physical (mm)	472.2 x 349.1 x 211.7
Physical Without Stand (mm)	472.2 x 287.8 x 47.5
Package Contents	VA2055Sm monitor, Power cable, VGA cable, Quick Start Guide
Recycle/Disposal	Please dispose of in accordance with local, state or federal laws.

UPC: 766907806311



Contact Sales
ViewSonic.com

888.881.8781
 email:
salesinfo@viewsonic.com