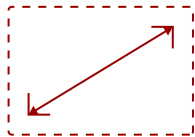




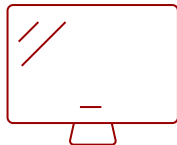
VG2239SMH - 22" 1080P ERGONOMIC MONITOR WITH HDMI, DISPLAYPORT, AND VGA

Key Features

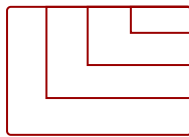
- 22 Inch Full HD (1920x1080p) LED monitor with 60Hz refresh rate
- Advanced ergonomics (tilt, swivel, rotate and height) for all-day comfort
- Flicker-Free technology and Blue Light Filter for reduced eye fatigue
- Optimized view settings offers "Game," "Movie," "Web," "Text," and "Mono" presets
- The VG2239SMH supports laptops, PCs, Macs and more with HDMI, USB, DisplayPort, VGA inputs



22"
DISPLAY



MVA
PANEL



1920 x 1080
RESOLUTION



Product Description

The ViewSonic® VG2239Smh is a 22" (21.5" viewable) Full HD LED multimedia monitor with future-proof connectivity and full ergonomic functionality ideal for corporate, government and education. With SuperClear® MVA panel technology for wide-angle viewing, and 20M:1 dynamic contrast ratio, this monitor delivers incredibly sharp images and video playback. Integrated with HDMI, DisplayPort, VGA and 2 USB ports, the VG2239Smh allows flexible connection to PC systems, laptops and other multimedia peripheral devices. ViewSonic's exclusive ViewMode provides intuitive presets to deliver optimized screen performance in different applications. In addition, Flicker-Free and Blue Light Filter technology help to eliminate eye strain from extended viewing periods.

Specifications

More Information

UPC

766907801811

Screen Size

22"

Viewable Area (in.)	21.5
Panel Type	MVA
Display Resolution	1920 x 1080
Static Contrast Ratio	3,000:1
Dynamic Contrast Ratio	20,000,000:1
Light Source	LED
Brightness	250 cd/m2
Colors	16.7M
Response Time (Typical GTG)	5ms
Viewing Angles	178° horizontal, 178° vertical
Backlight Life (Hours)	40,000
Panel Surface	3H Anti-glare, hard-coating
PC Resolution (max)	1920 x 1080
Mac® Resolution (max)	1920 x 1080
USB Type A	2
USB Type B	1
3.5mm Audio In	1
3.5mm Audio Out	1
HDMI In	1
VGA	1
DisplayPort	1
Internal Speakers	2-watt (x2)
Eco Mode (Conserve)	15W
Eco Mode (optimized)	18W
Consumption (typical)	20.5W
Consumption (max)	30W
Voltage	AC 100-240V (universal), 50-60Hz
Cable Organization	No
Kensington Lock Slot	1
Physical Controls	1, 2, Down, Up, Power
On Screen Display	Auto Image Adjust, Contrast/Brightness, Input Select, Audio Adjust, Color Adjust, Information, Manual Image Adjust, Setup Menu, Memory Recall(See user guide for complete OSD functionality)
Humidity (non-condensing)	10-90%
VESA Compatible	100 x 100 mm
Frequency Horizontal	24~82kHz
Frequency Vertical	50~75Hz

Analog Sync	Separate Sync, Composite Sync, Sync on Green
Height Adjust	135 mm / 5.3 in
Swivel	360°
Pivot (Right/Left)	90° / 0°
Regulations	WEEE, RoHS, CE, CB, WHQL, cULus, ICES003, FCC-B, Mexico Energy, EMC, EAC, UkrSEPRO + DoC, ErP, REACH SVHC List & DoC, EEL, UL-MX-CoC
Net (lbs)	10.6
Net Without Stand (lbs)	7.4
Gross (lbs)	14.9
Net (kg)	4.8
Net Without Stand (kg)	3.3
Gross (kg)	6.8
Packaging (in.)	22.9 x 19.0 x 7.4
Physical (in.)	20.2 x 16.5 x 9.4
Physical Without Stand (in.)	20.2 x 12.0 x 2.2
Packaging (mm)	581 x 483 x 187
Physical (mm)	512.4 x 418.0 x 239.6
Physical Without Stand (mm)	512.4 x 304.4 x 56.4
Package Contents	VG2239Smh monitor, Power cable, VGA cable, DisplayPort cable, Audio cable, USB cable, Quick Start Guide, ViewSonic Wizard CD (User Guide)
Recycle/Disposal	Please dispose of in accordance with local, state or federal laws.
Warranty	Three-year limited warranty on parts, labor and backlight

UPC: 766907801811



Contact Sales

ViewSonic.com

888.881.8781

email:

salesinfo@viewsonic.com