

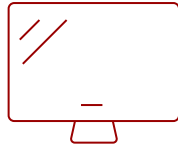
## VG2439SMH - 24" 1080P ERGONOMIC MONITOR WITH HDMI, DISPLAYPORT, AND VGA

## Key Features

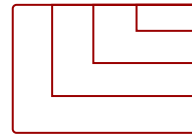
- SuperClear MVA panel technology
- Future-proof inputs
- Ergonomic tilt, pivot, swivel and height-adjustable design
- Exclusive ViewMode technology
- Flicker-free and Blue Light Filter technology
- ENERGY STAR Certification



24  
**DISPLAY**



MVA  
**PANEL**



1920 x 1080  
**RESOLUTION**



## Product Description

The ViewSonic® VG2439Smh is a 24" (23.6" viewable) Full HD LED multimedia monitor with future-proof connectivity and full ergonomic functionality ideal for corporate, government and education. With SuperClear® MVA panel technology for wide-angle viewing, and 20M:1 dynamic contrast ratio, this monitor delivers incredibly sharp images and video playback. Integrated with HDMI, DisplayPort, VGA and 2 USB ports, the VG2439Smh allows flexible connection to PC systems, laptops and other multimedia peripheral devices. ViewSonic's exclusive ViewMode provides intuitive presets to deliver optimized screen performance in different applications. In addition, Flicker-Free and Blue Light Filter technology help to eliminate eye strain from extended viewing periods. The LED backlight design makes this display Energy Star certified.

## Specifications

### More Information

<b>UPC</b>	766907801910
<b>Screen Size</b>	24
<b>Viewable Area (in.)</b>	23.6
<b>Panel Type</b>	MVA
<b>Display Resolution</b>	1920 x 1080
<b>Static Contrast Ratio</b>	3,000:1
<b>Dynamic Contrast Ratio</b>	20,000,000:1
<b>Light Source</b>	LED
<b>Brightness</b>	250 cd/m2

<b>Colors</b>	16.7M
<b>Response Time (Typical GTG)</b>	5ms
<b>Viewing Angles</b>	178° horizontal, 178° vertical
<b>Backlight Life (Hours)</b>	40,000
<b>Panel Surface</b>	3H Anti-glare, hard-coating
<b>PC Resolution (max)</b>	1920 x 1080
<b>Mac® Resolution (max)</b>	1920 x 1080
<b>USB Type A</b>	2
<b>USB Type B</b>	1
<b>3.5mm Audio In</b>	1
<b>3.5mm Audio Out</b>	1
<b>HDMI In</b>	1
<b>VGA</b>	1
<b>DisplayPort</b>	1
<b>Internal Speakers</b>	2-watt (x2)
<b>Eco Mode (Conserve)</b>	16W
<b>Eco Mode (optimized)</b>	19W
<b>Consumption (typical)</b>	23W
<b>Consumption (max)</b>	36W
<b>Voltage</b>	AC 100-240V (universal), 50-60Hz
<b>Cable Organization</b>	No
<b>Kensington Lock Slot</b>	1
<b>Physical Controls</b>	1, 2, Down, Up, Power
<b>On Screen Display</b>	Auto Image Adjust, Contrast/Brightness, Input Select, Audio Adjust, Color Adjust, Information, Manual Image Adjust, Setup Menu, Memory Recall (See user guide for complete OSD functionality)
<b>Humidity (non-condensing)</b>	20-90%
<b>VESA Compatible</b>	100 x 100 mm
<b>Frequency Horizontal</b>	24~82kHz
<b>Frequency Vertical</b>	50~75Hz
<b>Analog Sync</b>	Separate Sync, Composite Sync, Sync on Green
<b>Height Adjust</b>	135 mm / 5.3 in
<b>Swivel</b>	360°
<b>Pivot (Right/Left)</b>	90° / 0°
<b>Regulations</b>	WEEE, RoHS, CE, CB, WHQL, UL/cUL, FCC-B, ENERGY STAR 7.0, REACH SVHC list & DoC, EEL, Mexico Energy, UkrSEPRO+Doc, ErP
<b>Net (lbs)</b>	11.4
<b>Net Without Stand (lbs)</b>	8.2

<b>Gross (lbs)</b>	15.3
<b>Net (kg)</b>	5.2
<b>Net Without Stand (kg)</b>	3.7
<b>Gross (kg)</b>	6.9
<b>Packaging (in.)</b>	25 x 20 x 7.5
<b>Physical (in.)</b>	22.1 x 17.1 x 9.4
<b>Physical Without Stand (in.)</b>	22.1 x 13.1 x 2.3
<b>Packaging (mm)</b>	634 x 508 x 190
<b>Physical (mm)</b>	560.3 x 435.2 x 239.6
<b>Physical Without Stand (mm)</b>	560.3 x 332.7 x 58.2
<b>Package Contents</b>	VG2439Smh monitor, Power cable, VGA cable, DisplayPort cable, Audio cable, USB cable, Quick Start Guide, ViewSonic Wizard CD (User Guide)
<b>Recycle/Disposal</b>	Please dispose of in accordance with local, state or federal laws.

UPC: 766907801910



### Contact Sales

[ViewSonic.com](http://ViewSonic.com)

888.881.8781

email: [salesinfo@viewsonic.com](mailto:salesinfo@viewsonic.com)