

VX2252MH-S

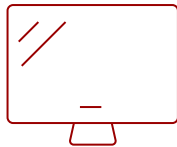
Key Features

REFURBISHED

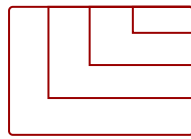
- ClearMotiv II delivers ultra-fast 2ms response time for blur-free gaming and entertainment
- Full HD 1080p resolution shows multimedia content in greater detail
- Ultra-high 50M:1 MEGA Dynamic Contrast Ratio delivers sharp, crisp images
- Dual 2W stereo speakers
- HDMI input to connect with high-definition multimedia devices
- VESA-mountable design for flexible placement



22
DISPLAY



TN
PANEL



1920x1080
RESOLUTION



Product Description

ViewSonic's VX2252mh is a 22" (21.5" viewable) Full HD, glossy-finish display that offers the ultimate visual experience for gaming and multimedia entertainment. The VX2252mh features ClearMotiv II technology that delivers 2ms ultra-fast response time for blur-free images during extreme gaming, and an ultra-high 50M:1 MEGA Dynamic Contrast Ratio for sharp, crisp color performance for enjoying movies. Integrated D-sub, DVI and HDMI inputs provide flexible connectivity for high-definition multimedia devices and gaming consoles, and dual built-in 2W stereo speakers complete the package for multimedia enjoyment. With a VESA-mountable design, the VX2252mh offers flexible mounting options for any of your gaming and video entertainment needs. A 3-year limited warranty and the industry's best pixel performance policy make the VX2252mh a great long-term investment.

Specifications

UPC	766907882117
Screen Size	22
Panel Type	TN
Display Resolution	1920 x 1080
Static Contrast Ratio	1,000:1
Dynamic Contrast Ratio	20M:1
Light Source	LED
Brightness	250 cd/m2
Response Time (Typical GTG)	2ms
Viewing Angles	170° horizontal, 160° vertical
Backlight Life (Hours)	30,000
Panel Surface	Anti-glare, hard-coating (3H)
PC Resolution (max)	1920x1080
Mac® Resolution (max)	1920x1080
3.5mm Audio In	1
3.5mm Audio Out	1
HDMI In	1
VGA	1
DVI-D	1
Internal Speakers	2W (x2)
Eco Mode (Conserve)	16W
Eco Mode (optimized)	19W
Consumption (typical)	22W
Voltage	AC 100-240V (universal), 50-60Hz
Cable Organization	No
Kensington Lock Slot	1
Physical Controls	Power, 1, 2, up, down
On Screen Display	uto Image Adjust, Contrast/Brightness, Input Select, Color Adjust, Audio Adjust, Information, Manual Image Adjust, Setup Menu, Memory Recall (See user guide for complete OSD functionality)
Temperature	32-104° F (0 - 40° C)
Humidity (non-condensing)	20-90%
Analog Sync	Separate Sync
Tilt (Forward/Back)	0° / 20°
Net (lbs)	7.3
Net Without Stand (lbs)	6.4
Gross (lbs)	10.6

Net (kg)	3.3
Net Without Stand (kg)	2.9
Gross (kg)	4.8
Packaging (in.)	22.1 x 17.8 x 5.0
Physical (in.)	20.1 x 15.8 x 8.8
Physical Without Stand (in.)	20.1 x 12.9 x 2.1
Packaging (mm)	560.0 x 452.0 x 128.0
Physical (mm)	511.1 x 402 x 222.5
Physical Without Stand (mm)	511.1 x 327.2 x 53.0
Regulations	cULus, FCC-B, ICES003, Energy Star 7.0 (by panel), Mexico Energy, UL-MX-CoC, CE EMC, CB, RoHS Green BOM List & RoHS DoC, ErP, REACH SVHC List & DoC, WEEE, UkrSEPRO+DoC, EAC
Package Contents	VX2252mh display, power cable, VGA cable, DVI cable, audio cable, Quick Start Guide, ViewSonic Wizard CD
Power Management	ENERGY STAR® standards
Recycle/Disposal	Please dispose of in accordance with local, state or federal laws.
Warranty	*Refurbished. 30-day DOA policy for full refund, with a 90-day repair warranty on parts and labor.
Classification	Discontinued, Refurbished

UPC: 766907882117



Contact Sales

ViewSonic.com

888.881.8781

email:

salesinfo@viewsonic.com