

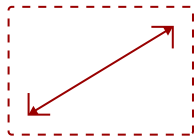
VX2252MH - 22" 1080P 2MS MONITOR WITH HDMI, VGA AND DVI

Key Features

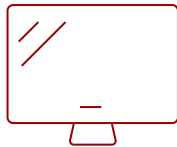
- 22 Inch Full HD (1920x1080p) monitor with thin bezels
- An arsenal of pre-set customizable visual modes keeps you ready for any FPS, RTS, or MOBA games
- MEGA Dynamic Contrast Ratio delivers sharp, crisp images
- The VX2252MH supports laptops, PCs, and Macs with HDMI, DVI-D, and VGA inputs



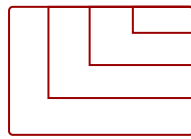
What's in the box.



22"
DISPLAY



TN
PANEL



1920 x 1080
RESOLUTION



*Power Cable varies by region

Product Description

ViewSonic's VX2252mh is a 22" (21.5" viewable) Full HD, glossy-finish display that offers the ultimate visual experience for gaming and multimedia entertainment. The VX2252mh features ClearMotiv II technology that delivers 2ms ultra-fast response time for blur-free images during extreme gaming, and an ultra-high 50M:1 MEGA Dynamic Contrast Ratio for sharp, crisp color performance for enjoying movies. Integrated D-sub, DVI and HDMI inputs provide flexible connectivity for high-definition multimedia devices and gaming consoles, and dual built-in 2W stereo speakers complete the package for multimedia enjoyment. With a VESA-mountable design, the VX2252mh offers flexible mounting options for any of your gaming and video entertainment needs. A 3-year limited warranty and the industry's best pixel performance policy make the VX2252mh a great long-term investment.


Specifications

UPC	766907734218
Screen Size	22"
Viewable Area (in.)	21.5
Panel Type	TN
Display Resolution	1920 x 1080
Static Contrast Ratio	1,000:1
Dynamic Contrast Ratio	20M:1
Light Source	LED
Brightness	250 cd/m2
Response Time (Typical GTG)	2ms
Viewing Angles	170° horizontal, 160° vertical
Backlight Life (Hours)	30,000
Panel Surface	3H Anti-glare, hard-coating
PC Resolution (max)	1920 x 1080
Mac® Resolution (max)	1920 x 1080
3.5mm Audio In	1
3.5mm Audio Out	1
HDMI In	1
VGA	1
DVI-D	1
Internal Speakers	2-watt (x2)
Eco Mode (Conserve)	16W
Eco Mode (optimized)	19W
Consumption (typical)	22W
Voltage	AC 100-240V (universal), 50-60Hz
Cable Organization	No
Kensington Lock Slot	1
Physical Controls	1, 2, Down, Up, Power
On Screen Display	Auto Image Adjust, Contrast/Brightness, Input Select, ColorAdjust, Audio Adjust, Information, Manual Image Adjust, Setup Menu, Memory Recall (See user guide for complete OSD functionality)
Humidity (non-condensing)	20-90%
VESA Compatible	100 x 100 mm
Frequency Horizontal	24~82kHz
Frequency Vertical	50~75Hz
Analog Sync	Separate Sync
Tilt (Forward/Back)	0° / 20°

Regulations	cULus, FCC-B, ICES003, Energy Star, Mexico Energy,UL-MX-CoC, CE EMC, CB, RoHS Green BOM List & RoHS DoC, ErP, REACH SVHC List& DoC, WEEE, UkrSEPRO+DoC, EAC
Net (lbs)	7.3
Net Without Stand (lbs)	6.4
Gross (lbs)	10.6
Net (kg)	3.3
Net Without Stand (kg)	2.9
Gross (kg)	4.8
Packaging (in.)	22.1 x 17.8 x 5.0
Physical (in.)	20.1 x 15.8 x 8.8
Physical Without Stand (in.)	20.1 x 12.9 x 2.1
Packaging (mm)	560.0 x 452.0 x 128.0
Physical (mm)	511.1 x 402 x 222.5
Physical Without Stand (mm)	511.1 x 327.2 x 53.0
Package Contents	VX2252mh display, power cable, VGA cable, DVI cable, audio cable, Quick Start Guide,ViewSonic Wizard CD
Recycle/Disposal	Please dispose of in accordance with local, state or federal laws.

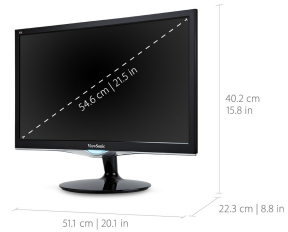
UPC: 766907734218

GREAT VISUALS
FOR HOME ENTERTAINMENT AND GAMING



2ms Response Time

Full HD (1920 x 1080) Resolution




51.1 cm | 20.1 in

40.2 cm | 15.8 in

22.3 cm | 8.8 in

54.6 cm | 21.5 in

Flexible, future-proof connectivity options



x1 HDMI
x1 VGA
x1 DVI-D

Ergonomics
20 degree tilt

Contact Sales
ViewSonic.com
 888.881.8781
 email:
salesinfo@viewsonic.com