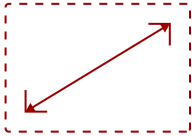
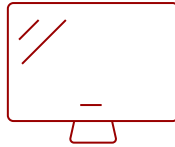


VA1912M-LED-S

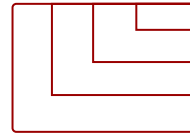
Key Features



19
DISPLAY



TFT
PANEL



RESOLUTION

Product Description

With its mercury-free backlight and low energy consumption, the ENERGY STAR certified VA1912m-LED is not only environmentally friendly but also friendly on your electricity bill. The savings of LED can add up to thousands of dollars saved for large install bases, such as big corporate buildings or schools. The savings can be as dramatic as \$20,000* in five years! One of the great features of VA1912m-LED is its ability to dim the backlight completely for pure darkness during dark scenes such as a night shot in a movie. Contrast ratios refer to the ratio of the brightest color to the darkest color. With traditional CCFL backlit displays, contrast ratios are limited to the fluorescent lamp's ability to dim in order to reproduce darkness. However, with the LED backlight, each LED has the ability to completely shut off allowing for a near infinite ratio of black to white contrast. The end result is true blacks that result in greater overall image quality.

Specifications

More Information	
UPC	766907639940
Screen Size	19
Panel Type	TFT
Display Resolution	1366 x 768
Static Contrast Ratio	1,000:1
Dynamic Contrast Ratio	10M:1
Light Source	LED
Brightness	250 cd/m2
Response Time (Typical GTG)	5ms
Viewing Angles	170° horizontal, 160° vertical
Backlight Life (Hours)	30,000
Panel Surface	Anti-glare, hard-coating (3H)
3.5mm Audio In	1

VGA	1
DVI-D	1
Eco Mode (Conserve)	9.5W
Eco Mode (optimized)	10.4W
Consumption (typical)	18W
Consumption (max)	20W
Voltage	AC 100-240V (universal), 50-60Hz
Cable Organization	No
Kensington Lock Slot	1
Physical Controls	Power, 1, up, down, 2
On Screen Display	Auto Image Adjust, Contrast/Brightness, Input Select (D-SUB, DVI), Audio Adjust (Volume, Mute), Color Adjust (sRGB, Bluish, Cool, Native, Warm, User Color [R,G,B]), Information, Manual Image Adjust (H/V Position, Horizontal Size, Fine Tune, Sharpness,
Temperature	32-104° F (0 - 40° C)
Humidity (non-condensing)	10-90%
VESA Compatible	100 x 100 mm
Frequency Horizontal	24~82kHz
Frequency Vertical	50~75Hz
Analog Sync	Separate Sync
Regulations	CE,CB, UL, cUL, FCC-B / ICES-003B, WEEE, RoHS, ENERGY STAR®,REACH SVHC List
Net (lbs)	6.3
Net Without Stand (lbs)	5.9
Gross (lbs)	7.8
Net (kg)	2.8
Net Without Stand (kg)	2.7
Gross (kg)	3.6
Packaging (in.)	19.5 x 15.9 x 5.0
Physical (in.)	17.5 x 14.1 x 7.1
Physical Without Stand (in.)	17.5 x 10.8 x 2.1
Packaging (mm)	495 x 405 x 128
Physical (mm)	444.3 x 358.7 x 180
Physical Without Stand (mm)	444.3 x 276.5 x 53.6
Package Contents	VA1912m-LED display, power cable, VGA cable, audio cable, Quick Start Guide, ViewSonic Wizard CD (available in some countries only), Base instruction guide
Power Management	ENERGY STAR® standards
Recycle/Disposal	Please dispose of in accordance with local, state or federal laws.
Warranty	*Refurbished. 30-day DOA policy for full refund, with a 90-day repair warranty on parts and labor.

Classification

Discontinued

UPC: 766907639940



Contact Sales

ViewSonic.com

888.881.8781

email: salesinfo@viewsonic.com