

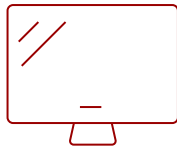
VA2232WM-LED - 22" DISPLAY, TN PANEL, 1680 X 1050 RESOLUTION

Key Features

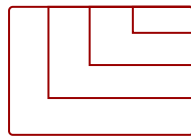
- Widescreen LED
- 10M:1 Dynamic Contrast Ratio
- DVI and VGA inputs



22
DISPLAY



TN
PANEL



1680 x 1050
RESOLUTION



Product Description

ViewSonic's VA2232wm-LED display is a true 22" wide LED monitor; with a native 1680x1050 resolution and sRGB color calibration function. This model presents exquisite picture quality and an immersive viewing experience. Along with an impressive 10,000,000:1 MEGA dynamic contrast ratio, the VA2232wm-LED automatically detects and adjusts dark and bright levels to greatly enhance grayscale and color contrast performance. Save energy and money with ViewSonic's Eco-mode solution which reduces power consumption and extends backlight life. The VA2232wm-LED provides great value concerning viewing performance and is an excellent choice for home and business.

Specifications

More Information

UPC

766907603910

Screen Size	22
Panel Type	TN
Display Resolution	1680 x 1050
Static Contrast Ratio	1,000:1
Dynamic Contrast Ratio	10,000,000:1
Light Source	LED
Brightness	250 cd/m2
Response Time (Typical GTG)	5ms
Viewing Angles	170° horizontal, 160° vertical
Backlight Life (Hours)	40,000
Panel Surface	3H Anti-glare, hard-coating
PC Resolution (max)	1680 x 1050
Mac® Resolution (max)	1680 x 1050
3.5mm Audio In	1
VGA	1
DVI-D	1
Internal Speakers	2-watt (x2)
Eco Mode (Conserve)	14W
Eco Mode (optimized)	18W
Consumption (typical)	26W
Voltage	AC 100-240V (universal), 50-60Hz
Cable Organization	No
Kensington Lock Slot	1
Physical Controls	1, 2, Down, Up, Power
On Screen Display	Auto Image Adjust, Contrast/Brightness, Input Select (D-SUB,DVI), Audio adjust (Volume mute), Color Adjust (sRGB,9300K, 7500K, 6500K, 5000K, User Color [R, G, B]),Information, Manual Image Adjust (H/V Position, HorizontalSize, Fine Tune, Sharpness, Dy
Humidity (non-condensing)	20-90%
VESA Compatible	100 x 100 mm
Frequency Horizontal	24~82kHz
Frequency Vertical	50~75Hz
Analog Sync	Separate Sync
Net (lbs)	8.6
Net Without Stand (lbs)	7.8
Gross (lbs)	12.3
Net (kg)	3.9
Net Without Stand (kg)	3.5

Gross (kg)	5.6
Packaging (in.)	22.4 x 19.6 x 5.7
Physical (in.)	20.1 x 16.4 x 7.7
Physical Without Stand (in.)	20.1 x 13.2 x 2.4
Packaging (mm)	570 x 498 x 145
Physical Without Stand (mm)	510.7 x 335.1 x 61.2
Regulations	UL / cUL, FCC-B (including ICES003), CE, Energy Star 7.0, EPEAT Silver, REACH, WEEE, EAC
Package Contents	VA2232wm-LED Display, power cable, VGA video cable, audio cable, ViewSonic Wizard CD, Quick Start Guide
Recycle/Disposal	Please dispose of in accordance with local, state or federal laws.
Classification	Discontinued

UPC: 766907603910



Contact Sales

ViewSonic.com

888.881.8781 ☎

email:

salesinfo@viewsonic.com