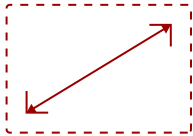


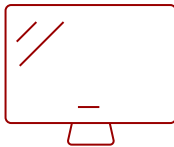
5,500 ANSI LUMENS 1080P LAMP-FREE LASER INSTALLATION PROJECTOR | LSD500HD

Key Features

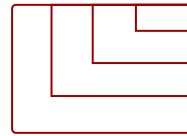
- **RUNS FOR YEARS WITH MINIMAL MAINTENANCE:** Runs up to 30,000 hours with zero lamp replacements, keeping maintenance low and uptime high.
- **STAYS BRIGHT IN ANY LIGHTING:** At 5,500 ANSI lumens, images remain clear in fully lit commercial spaces without washing out color or detail.
- **MANAGE EVERY UNIT REMOTELY WITH LAN CONTROL:** Certified for Crestron and Q-SYS, and compatible with AMX, PJ Link and Extron for seamless AV integration.
- **SHARP, HIGH-CONTRAST IMAGING:** A precise 0.65" DMD chip delivers deep blacks, crisp text and vivid color at any screen size.
- **LOWER RUNNING COSTS:** Uses up to 62% less power than traditional lamp projectors, cutting energy costs significantly over the life of the unit.
- **NO WARM-UP, NO WAIT:** Powers on to full brightness instantly with no warm-up and no cooldown required.



30 - 300 in. / 0.76 - 7.62 m
DISPLAY



PANEL



4K UHD(3840 x 2160)
RESOLUTION



Product Description

The LSD500HD is a 5,500-lumen standard-throw projector designed to deliver clarity in fully lit boardrooms, lecture halls or large commercial venues. The latest-generation laser phosphor technology keeps it running up to 30,000 hours with zero lamp replacements, so facilities teams spend less time on service calls and more time on everything else. A precise 0.65" DMD chip and Full HD 1080p resolution produce deep contrast and crisp detail at any screen size, from a compact conference room to a 300" auditorium screen. HDMI 2.0 with HDR10 and HLG support accepts 4K UHD source content at 60Hz, so high-quality media plays back without signal compromise. Certified for Crestron and Q-SYS and compatible with AMX, PJ Link and Extron, the LSD500HD drops into existing control infrastructure and lets AV teams monitor and manage multiple units from a single location. With 360° projection, 1.3x optical zoom and full keystone correction, installers have the range to handle any room layout cleanly.

Specifications

	More Information
UPC	766907038187
Light Source	Laser Phosphor System
Display Resolution	Full HD (1920x1080)
Display Resolution	1920 x 1080
Brightness (Lumens)	5,500 ANSI
Screen Size	30 - 300 in. / 0.76 - 7.62 m
Throw Distance	0.75-9.76m (100"@2.50m)

Throw Ratio	1.13~1.47
Offset	132%+/-10%
Keystone	Vertical ($\pm 30^\circ$) / Horizontal ($\pm 30^\circ$)
Lens	1.3x optical zoom
Light Source Life, Normal (hours)	20000
Light Source Life, Dynamic Eco-Mode (hours)	30000
Color Depth	1.07 Billion Colors
Dynamic Contrast Ratio	3,000,000:1
Aspect Ratio	16:9
Input Lag	16.8ms
Lens Shift	N/A (Digital Zoom: 0.8x-2.0x)
Frequency Horizontal	15K-102KHz
Frequency Vertical	24-120Hz
PC Resolution (max)	4K UHD(3840 x 2160)
PC Resolution (min)	VGA(640 x 480)
Mac® Resolution (max)	4K UHD(3840 x 2160)
Mac® Resolution (min)	VGA(640 x 480)
USB 2.0 Type A	1
Ethernet LAN (RJ45)	1
3.5mm Audio Out	1
Control (RS232)	1
HDMI 2.0 In	2
Internal Speakers	15W (x1)
Voltage	100-240V+/- 10%, 50/60Hz AC
Consumption (typical)	165W
Stand-by	<0.5W
Physical Controls	Keypad, Power key
On Screen Display	Display, Image, Power Management, Basic, Advanced, System, Information (See user guide for full OSD functionality)
Temperature	32-104° F (0 - 40° C)
Normal	32dB
Eco-Mode	27dB
Kensington Lock Slot	1
Net (lbs)	6.4lbs
Gross (lbs)	10.14lbs
Net (kg)	2.90 kg

Packaging (in.)	15.75 x 11.02 x 6.10
Packaging (mm)	400 x 280 x 155
Physical (mm)	286 x 216 x 129
Regulations	cTUVus, CE, FCC, RoHS, REACH, EEE
Package Contents	Projector, power cable, remote control, Quick Start Guide,
Warranty	Three-year limited warranty on parts and labor, 1st year free Express Exchange® service. (One year Express Exchange Service requires product registration).
Recycle/Disposal	Please dispose of in accordance with local, state or federal laws.

UPC: 766907038187



Contact Sales

ViewSonic.com

888.881.8781

email: salesinfo@viewsonic.com