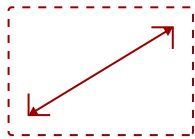


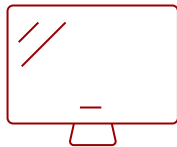
VIEWSONIC 14" WUXGA DUAL SCREEN PORTABLE MONITOR WITH USB-C AND PROTECTIVE CASE | VG1457

Key Features

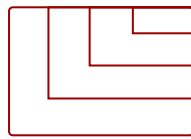
- **TRIPLE YOUR SCREEN REAL ESTATE ANYWHERE:** Two foldable 14" WUXGA displays deliver full dual-screen productivity in a setup that weighs 2.6 lbs.
- **ADAPTS TO ANY SCENARIO:** Mirror, Extend, Full-Screen Mode, Share Mode, and Dual Source Mode.
- **CONNECT A SECOND DEVICE:** Dual USB-C inputs keep two devices running on independent screens at the same time.
- **STAY POWERED WHEREVER YOU WORK:** 65W two-way USB-C Power Delivery keeps a connected laptop charged while both screens run, or the laptop powers the monitor when no outlet is available.
- **PLUG AND PLAY CONNECTIVITY:** Connect via USB-C and both screens are live in seconds, with no drivers or software installation required.



14" (x2)
DISPLAY



IPS
PANEL



1920x1200
RESOLUTION



Product Description

When you need to triple your screen real estate without dragging around an entire setup, the VG1457 delivers. ViewSonic's first portable dual-screen monitor packs two 14" WUXGA displays into a foldable unit that weighs 2.6 lbs and fits in any laptop bag. Five viewing modes handle every scenario. Full-Screen mode opens both panels to an expansive 19" viewing space for focused solo work, while Share mode opens both screens outward so two people can view from opposite sides. Mirror and Extend modes with Portrait and Landscape orientations cover the rest. Dual USB-C inputs keep two devices running on independent screens at the same time. With 65W two-way Power Delivery, one cable keeps both monitors running and a laptop charged.

Specifications

UPC	766907038675
Screen Size	14" (x2)
Viewable Area (in.)	14" (x2)
Panel Type	IPS
Display Resolution	1920 x 1200
Display Resolution	WUXGA (1920x1200)
Static Contrast Ratio	800:1
Dynamic Contrast Ratio	50,000,000:1
Light Source	LED
Brightness	250 cd/m2
Color Space Support	8 bit (6 bit + FRC)
Aspect Ratio	16:10
Viewing Angles	170° horizontal, 170° vertical
Backlight Life (Hours)	15,000
Panel Surface	Anti-glare, hard-coating (3H)
Refresh Rate	60Hz
PC Resolution (max)	1920x1200
Mac® Resolution (max)	1920x1080
USB Type C	65W x 3
Internal Speakers	2W (x2)
Consumption (typical)	13W
Consumption (max)	18.5W
Voltage	AC 100-240V (universal), 50-60Hz
Stand-by	0.5W
Power Supply	External
Cable Organization	No
Physical Controls	Up, Down, Enter, Power
On Screen Display	Input Select, Display Settings, Volume, Color Adjust, Information, All Recall
Temperature	32-104° F (0 - 40° C)
Humidity (non-condensing)	20-90%
Frequency Horizontal	15 ~ 82 KHz
Frequency Vertical	50 ~ 170 Hz
Swivel	340°
Pivot (Right/Left)	Landscape Mode: 0~180 degrees, Portrait Mode: 0~180 degrees, Stand Hinge: up to 90 degrees
Tilt (Forward/Back)	15° / 45°
Regulations	cTUVus, FCC-B, ICES003, Energy Star 8.0, EPEAT Silver, CEC

Net (lbs)	2.6
Net Without Stand (lbs)	2.6
Gross (lbs)	4.4
Net (kg)	1.2
Net Without Stand (kg)	1.2
Gross (kg)	2.0
Packaging (in.)	15.4" x 11.3" x 3"
Physical (in.)	16.77" x 12.35" x 0.59"
Physical Without Stand (in.)	12.21" x 8.37" x 0.98"
Packaging (mm)	391mm x 287mm x 77mm
Physical (mm)	425.9mm x 313.8mm x 15mm
Physical Without Stand (mm)	312.8mm x 212.65mm x 22.5mm
Package Contents	LCD Display, AC/DC Adapter, 2x USB Type C Cable, Protective Case, Quick Start Guide
Recycle/Disposal	Please dispose of in accordance with local, state or federal laws.
Warranty	Three-year limited warranty on parts, labor and backlight

UPC: 766907038675



Contact Sales
ViewSonic.com

888.881.8781
 email:
salesinfo@viewsonic.com