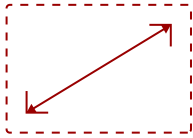


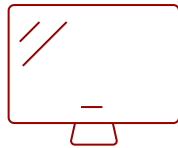
136" ALL-IN-ONE DIRECT VIEW LED DISPLAY | LDM136-151C

Key Features

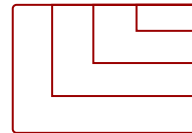
- SEAMLESS AND IMMERSIVE SCREEN: Bezel-less design, vibrant colors, and sharp visuals in any lighting environment.
- DURABLE COB TECHNOLOGY: IP54 dust/moisture resistance and IK08 impact protection.
- ALL-IN-ONE INTEGRATION: Built-in power, control, and image systems for quick, simple installation.
- FLEXIBLE CONTROL BAR PLACEMENT: Detachable bar mounts up to 30 feet away for a clean setup.
- EASY FRONT SERVICEABILITY: Front access LED modules allow fast maintenance with included vacuum tool.



136"
DISPLAY



PANEL



3840x2160
RESOLUTION



Product Description

The ViewSonic® LDM136-151C is an innovative All-in-One Direct View LED display. With a huge 136" screen size and advanced Chip-on-Board (COB) technology, the LDM136-151C is built to impress as a centerpiece in any higher education auditorium or lecture hall, as well as in corporate conference rooms, boardrooms and lobbies. This display boasts immersive and stunning visuals thanks to Chip-on-Board (COB) technology with Full HD resolution that pairs perfectly with an impressive 600-nit high brightness and 10,000:1 contrast ratio. This ensures content and messages are always easy to see, even in brightly lit environments. As a true all-in-one solution, the LDM136-151C includes the display, controller, and all components in a single part number, making specification, purchasing, and setup incredibly simple. With a high brightness of 600 nits, an incredible 10,000:1 contrast ratio, and powerful dual 30W speakers, this display provides vibrant, high-impact visuals and immersive sound for an exceptional viewing experience.

Specifications

More Information

UPC	766907041323
OS	Android 9.0
GPU	ARM Mali-T860MP4
CPU	RK3399
Memory	4GB DDR4
Storage	Total 32GB (26GB available storage)
Operating System	Android 9.0
CPU	RK3399

GPU	ARM Mali-T860MP4
Memory	4GB
Storage	Total 32GB (26GB available storage)
Internal Speakers	30W x 2
PC Resolution (max)	3840x2160
Mac® Resolution (max)	3840x2160
HDMI 2.0 (with HDCP 2.2)	4
HDMI 2.0 Out	1
3.5mm Audio Out	2
SPDIF	1
USB Type A	3
RS232	1
Ethernet LAN (RJ45)	2
IR in	1
Voltage	100-120V/20A ~ 50/60Hz
Consumption (max)	1095W
Consumption (typical)	400W
Stand-by	<0.5W
On Screen Display	Yes
Remote Control	Yes
Temperature	32-104° F (0 - 40° C)
Humidity (non-condensing)	20-80%
Net (lbs)	373
Gross (lbs)	600
Net (kg)	169
Gross (kg)	272
Packaging (in.)	77.95x40.16x48.03
Physical (in.)	118.58x72.22x1.61
Physical with Wall Mount (in.)	118.58x72.22x2.35
Packaging (mm)	1980x1020x1220
Physical (mm)	3012x1834.5x41
Physical with Wall Mount (mm)	3012x1834.5x59.8
Warranty	5-year limited warranty on parts and labor, on-site service
Recycle/Disposal	Please dispose of in accordance with local, state or federal laws.
Package Contents	Power Cord, LAN Cable, IR Extender Cable, Remote Control, Installation Guide, Wall Mount, LD-MK-004, LD-MK-006

Regulations	cTUVus, FCC, RoHS
Display Type	Direct View LED
Screen Size	136"
Viewable Area (in.)	118 (H) x 66.4 (V)
LED Pitch Size (mm)	1.56
LED Grayscale	13 bits
Display Resolution	1920 x 1080
Refresh Rate	3,840Hz
Aspect Ratio	16:9
Static Contrast Ratio	10,000:1
Backlight Life (Hours)	100,000
Brightness	600 nits (100 levels adjustable)
Viewing Angles	170° horizontal, 170° vertical
Impact Protection Rating	IK08 (Front)

UPC: 766907041323



Contact Sales

ViewSonic.com

888.881.8781

email: salesinfo@viewsonic.com