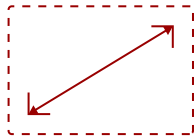


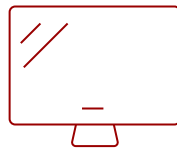
75" 4K 16:9 ANDROID EDLA VIEWBOARD INTERACTIVE DISPLAY WITH INTEGRATED MICROPHONE AND USB-C | IFP7541

Key Features

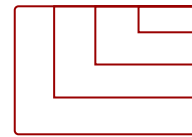
- Smooth Multitasking Without Lag or Delays
- Immersive Audio for Maximum Engagement
- One-cable USB-C Simplicity
- Responsive Writing Experience
- Engaging Lessons with ViewSonic® Education Software
- Robust Security and Centralized Management
- Native Access to the Google Education Ecosystem
- Eco-Friendly & Energy Efficient



75"
DISPLAY



PANEL



RESOLUTION



Product Description

The ViewSonic® ViewBoard® IFP7541 interactive display delivers the right balance of features, performance, and value for today's classrooms and meeting spaces. This 75-inch touchscreen is designed to feel premium and intuitive, making it easy for educators and teams to get up and running with minimal setup. Powered by the latest Android™ platform with EDLA certification, it provides secure, built-in access to Google Workspace, Microsoft 365, and familiar apps. Everything works right away, so users can focus on sharing ideas instead of troubleshooting technology.

One-cable USB-C simplifies connectivity, while powerful built-in audio ensures everyone can hear and be heard. Energy-efficient features help reduce power consumption over time, making the IFP7541 a smart, future-ready choice that's easy to deploy, easy to use, and easy on budgets.

Specifications

[More Information](#)

UPC

766907038941

OS	ViewBoard OS EDLA
CPU	Rockchip RK3576
Memory	8GB LPDDR
Storage	128GB eMMC
Microphone	Beamforming array x 8, full duplex echo cancellation
Internal Speakers	25W*2 + 20W = 70W
HDMI 2.1 In	3
HDMI Out	1
VGA	1
DisplayPort	1
SPDIF	1
USB Type A	5
USB Type B	3
USB Type C	100W x 1, 15W x 1
RS232	1
Ethernet LAN (RJ45)	2
Intel® OPS Slot In (80-pin)	1
Line In	1
Voltage	100-240 VAC
Stand-by	<0.5W
Physical Controls	7 (Power, Home, Input source, Touch, Freeze, Volume+, Volume-)
Temperature	32-104° F (0 - 40° C)
Non-Operating Temperature	-4°F to 140°F (-20C to 60C)
Humidity (non-condensing)	20-80%
Touch Technology	IR Recognition
Touch Points	64 points
Tip Detection	Dual tips: 3mm and 10mm / Finger: 12-15mm / Palm: 30mm
Other	Palm Rejection
Latency	≤5ms
Net (lbs)	101.2
Gross (lbs)	128.09
Net (kg)	45.9
Gross (kg)	58.1
Packaging (in.)	72.95x45.35x6.93
Physical (in.)	67.21x40.58x3.44
Packaging (mm)	1853x1152x176

Physical (mm)	1709.1x1030.8x87.4
VESA Compatible	800 x 400 mm
Warranty	3-year limited warranty on parts, labor and backlight, onsite warranty
Recycle/Disposal	Please dispose of in accordance with local, state or federal laws.
Package Contents	IFP7541, Power Cord (3m), USB-C Cable (1.8m) Remote control with AAA battery, USB Touch Cable (3m), Stylus x 2 (a set), Quick Start Guide + Compliance statement, RS232 adapter, Clamp x 5, Camera Plate, Screw x 4, HDMI cable 3m, VB-WIFI-004 WiFi Adapter
Regulations	CTUVus, FCC, Energy 8.0, EPEAT, CEC
Ethernet LAN	2 (10/100/1000 Mbps BaseT for Android and OPS)
Wifi	VB-WIFI-004 adapter, 802.11AX + Bluetooth 5.0
Bluetooth	Bluetooth 5.0
Screen Size	75"
Light Source	DLED
Display Resolution	3840 x 2160
Refresh Rate	60Hz
Aspect Ratio	16:9
Static Contrast Ratio	5,000:1
Dynamic Contrast Ratio	5,000:1
Backlight Life (Hours)	65,000
Brightness	400 cd/m2
Response Time (Typical GTG)	8ms
Viewing Angles	178° horizontal, 178° vertical
Panel Surface	Anti-glare, 9H Pencil hardness / 3.2mm thickness

UPC: 766907038941



Contact Sales

[ViewSonic.com](https://www.viewsonic.com)

888.881.8781

email: salesinfo@viewsonic.com