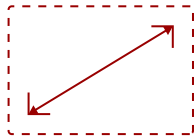


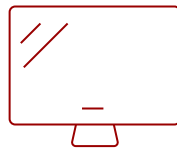
IFP8635 - 86" 4K 16:9 ANDROID EDLA VIEWBOARD INTERACTIVE DISPLAY WITH INTEGRATED USB-C

Key Features

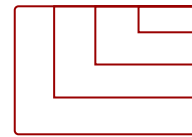
- Smooth Multitasking Without Lag or Delays
- Responsive Writing Experience
- Robust Security and Centralized Management
- Engaging Lessons with ViewSonic® Education Software
- Native Access to the Google Education Ecosystem
- Eco-Friendly & Energy Efficient



86"
DISPLAY



PANEL



RESOLUTION



Product Description

The ViewSonic® ViewBoard® IFP8635 interactive display makes collaboration simple, secure, and affordable. This 86" touchscreen is designed to deliver a premium, easy-to-use experience without stretching your budget. Powered by Android 16 with Android™ EDLA certification, it gives you quick access to Google Workspace, Microsoft 365, and the apps teams and classrooms already rely on. Writing on the screen feels smooth and precise, helping ideas move faster without lag or distraction. One-cable USB-C keeps setups clean and makes it easy to connect, present, and collaborate from a single device. Built-in ambient and motion sensors help reduce energy use when the display isn't in use, supporting long-term efficiency with no extra effort. The result is a future-ready interactive display that performs reliably, feels familiar, and fits comfortably within today's budgets.

Specifications

More Information

UPC	766907038873
OS	ViewBoard OS EDLA

CPU	Rockchip RK3576
Memory	8GB LPDDR
Storage	128GB eMMC
Internal Speakers	Soundbar design: 40W (20W x 2)
HDMI 2.1 In	3
HDMI Out	1
VGA	1
DisplayPort	1
SPDIF	1
USB Type A	5
USB Type B	3
USB Type C	2
RS232	1
Ethernet LAN (RJ45)	2
Intel® OPS Slot In (80-pin)	1
Line In	1
Voltage	100-240 VAC
Stand-by	<0.5W
Temperature	32-104° F (0 - 40° C)
Non-Operating Temperature	-4°F to 140°F (-20C to 60C)
Humidity (non-condensing)	20-80%
Touch Technology	IR Recognition
Touch Points	64 points
Tip Detection	Dual tips: 3mm and 10mm, Finger: 12-15mm, Palm: 30mm
Other	Palm Rejection
Latency	≤5ms
Net (lbs)	85.76
Gross (lbs)	101.2
Net (kg)	38.9
Gross (kg)	45.9
Packaging (in.)	72.95 x 44.88 x 6.93
Physical (in.)	67.28 x 40.15 x 3.87
Packaging (mm)	1853.0 x 1144.0 x 176.0
Physical (mm)	1709.0 x 1020.0 x 98.2
VESA Compatible	800 x 400 mm
Warranty	3-year limited warranty on parts, labor and backlight, onsite warranty

Recycle/Disposal	Please dispose of in accordance with local, state or federal laws.
Package Contents	IFP7535, Power Cord (3m), USB-C Cable (1.8m) Remote control with AAA battery, USB Touch Cable (3m), Stylus x 2 (a set), Quick Start Guide + Compliance statement, RS232 adapter, Clamp x 5, Camera Plate, Screw x 4, HDMI cable 3m, VB-WIFI-004 WiFi Adapter
Regulations	CTUVus, FCC, Energy 8.0, EPEAT, CEC
Ethernet LAN	2 (10/100/1000 Mbps BaseT for Android and OPS)
Wifi	VB-WIFI-004 adapter, 802.11AX + Bluetooth 5.0
Screen Size	86"
Light Source	DLED
Display Resolution	3840 x 2160
Refresh Rate	60Hz
Aspect Ratio	16:9
Static Contrast Ratio	5,000:1
Dynamic Contrast Ratio	5,000:1
Backlight Life (Hours)	65,000
Brightness	400 cd/m2
Response Time (Typical GTG)	8ms
Viewing Angles	178° horizontal, 178° vertical
Panel Surface	Anti-glare, 9H Pencil hardness / 3.2mm thickness

UPC: 766907038873



Contact Sales

ViewSonic.com

888.881.8781

email: salesinfo@viewsonic.com