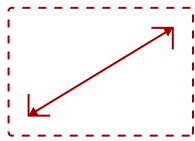


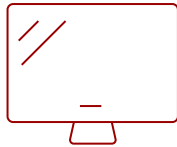
24" 1080P IPS 120 HZ MONITOR WITH HDMI AND VGA VA240A-H MONITOR

Key Features

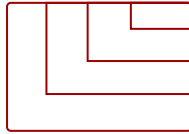
- **ACCURATE FROM ALL ANGLES:** Enjoy accurate colors no matter your viewing angle with SuperClear IPS panel technology.
 - **FULL HD 1080P RESOLUTION:** Full HD resolution at 1920x1080 delivers sharp, clear visuals that make work, play, and entertainment look great.
 - **EDGE-TO-EDGE CLARITY:** A frameless edge-to-edge screen creates an immersive view and makes multi-monitor setups feel seamless.
 - **VERSATILE CONNECTIVITY:** HDMI and VGA inputs let you connect to a wide range of devices with ease.
 - **VARIABLE REFRESH RATE TECHNOLOGY:** Variable refresh rate syncs your GPU and monitor for smoother gameplay and a more immersive experience.
-



24"
DISPLAY



VA
PANEL



1920x1080
RESOLUTION



Product Description

The ViewSonic® VA240A-H monitor gives you flexible connectivity, clear visuals, and wide viewing angles that fit easily into your everyday setup. This 24-inch monitor features a three-sided frameless design that keeps your space looking clean and modern. A SuperClear® IPS panel delivers bright colors and strong contrast for a crisp picture from almost any angle. Plug in your PC, laptop, or gaming console with the included HDMI cable. It also supports variable refresh rate technology for smoother gaming. Enjoy solid performance at a great price with the VA240A-H monitor.

Specifications

More Information

UPC	766907030938
Screen Size	24"
Viewable Area (in.)	23.8
Panel Type	VA
Display Resolution	1920 x 1080
Display Resolution	Full HD (1920x1080)
Static Contrast Ratio	1,500:1

Dynamic Contrast Ratio	50,000,000:1
Light Source	LED
Brightness	250 cd/m ²
Colors	16.7M
Color Space Support	6 bit + FRC
Aspect Ratio	16:9
Response Time (Typical GTG)	4ms
Response Time (MPRT)	1ms
Viewing Angles	178° horizontal, 178° vertical
Backlight Life (Hours)	30,000
Panel Surface	Anti-Glare type, Hard-coating (3H), Haze 25%
Refresh Rate	120Hz
PC Resolution (max)	1920x1080
Mac® Resolution (max)	1920x1080
VGA	1
HDMI 1.4 In	1
Eco Mode (Conserve)	16W
Eco Mode (optimized)	18W
Consumption (typical)	22W
Consumption (max)	23W
Voltage	AC 100-240V (universal), 50-60Hz
Stand-by	0.3W
Power Supply	External
Cable Organization	No
Kensington Lock Slot	1
Physical Controls	Key 1 (favorite), Key 2, Key 3, Key 4, Key 5 (power)
On Screen Display	Input Select, ViewMode, Color Adjust, Manual Image Adjust, Setup Menu
Temperature	32-104° F (0 - 40° C)
Humidity (non-condensing)	20-90%
VESA Compatible	75 x 75 mm
Frequency Horizontal	HDMI: 30 ~ 135 KHz, VGA: 24 ~ 86 KHz
Frequency Vertical	HDMI: 48 ~ 120 Hz, VGA: 48 ~ 75 Hz
Tilt (Forward/Back)	3° / 15°
Regulations	cTUVus, FCC-B, ICES003, CEC, IRAM S-Mark, NOM, Mexico Energy
Net (lbs)	6.4
Net Without Stand (lbs)	5.7

Gross (lbs)	8.8
Net (kg)	2.9
Net Without Stand (kg)	2.6
Gross (kg)	4.0
Packaging (in.)	23.9 x 16.5 x 4.3
Physical (in.)	21.25 x 16.35 x 7.44
Physical Without Stand (in.)	21.25 x 12.77 x 2.01
Packaging (mm)	606.0 x 419.0 x 110.0
Physical (mm)	539.8 x 415.32 x 188.97
Physical Without Stand (mm)	539.8 x 324.3 x 51.01
Package Contents	LCD Display, Power Cable, AC/DC Adapter, HDMI Cable, Quick Start Guide
Recycle/Disposal	Please dispose of in accordance with local, state or federal laws.
Warranty	Three-year limited warranty on parts, labor and backlight

UPC: 766907030938



Contact Sales

ViewSonic.com

888.881.8781 ☎

email:

salesinfo@viewsonic.com