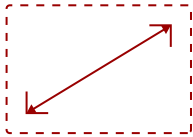
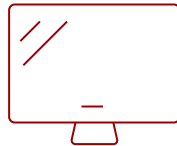


VIEWSONIC 3,700 ANSI LUMENS 1080P HOME THEATER PROJECTOR WITH POWERED USB | PX700HDH-S

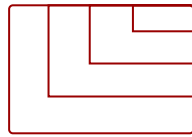
Key Features



30 - 300 in. / 0.76 - 7.62 m
DISPLAY



PANEL



VGA(640 x 480) to WUXGA RB(1920 x 1200)
RESOLUTION



HDMI AND POWERED USB
For optional streaming dongles

Product Description

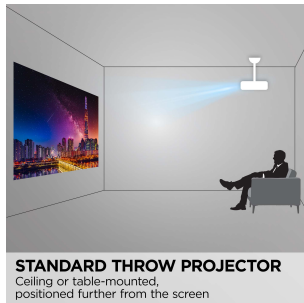
Transform your living room into a home theater with the ViewSonic® PX700HDH projector. Project huge, bright Full HD images up to 300 inches, creating an immersive movie experience. With 3,700 ANSI lumens of brightness, enjoy vivid, clear pictures even in rooms with ambient light. SuperColor™ technology delivers rich, vibrant colors that bring your favorite films and shows to life, while a high 22,000:1 native contrast ratio unveils hidden details for enhanced picture quality. With a long-lasting lifespan of up to 20,000 hours, this projector delivers more movie nights and less maintenance hassle. Easily connect all your devices with dual HDMI inputs and USB power - perfect for Blu-ray players, gaming consoles, and streaming sticks. The ViewSonic PX700HDH is the perfect, affordable way to bring the big screen home.

Specifications

	More Information
UPC	766907035421
Light Source	DLP Lamp
Display Resolution	Full HD (1920x1080)
Display Resolution	1920 x 1080
Brightness (Lumens)	3,700 ANSI
Screen Size	30 - 300 in. / 0.76 - 7.62 m
Throw Distance	1m-10.96m (100"@3.32m)
Throw Ratio	1.49-1.64
Keystone	Vertical (+/- 40°)
Lens	1.1x optical zoom
Light Source (watt)	203
Light Source Life, Normal (hours)	6000
Light Source Life, Dynamic Eco-Mode (hours)	20000
Color Depth	1.07 Billion Colors
Dynamic Contrast Ratio	22,000:1
Aspect Ratio	16:9
Frequency Horizontal	15K-102KHz
Frequency Vertical	24-120Hz ->23-120Hz
PC Resolution (max)	VGA(640 x 480) to WUXGA RB(1920 x 1200)
Mac® Resolution (max)	480i, 480p, 576i, 576p, 720p, 1080i, 1080p
USB 2.0 Type A	1 (5V/1.5A) Power, Service
3.5mm Audio Out	1
Control (RS232)	1
HDMI 1.4 (with HDCP 1.4)	2
Internal Speakers	10W (x1)
Voltage	100-240 VAC, 50-60Hz
Consumption (typical)	300W
Stand-by	<0.5W
Physical Controls	Keypad, Power key
On Screen Display	Display, Image, Power Management, Basic, Advanced, System, Information (See user guide for full OSD functionality)
Temperature	32-104° F (0 - 40° C)
Kensington Lock Slot	1

Net (lbs)	5.3lbs
Gross (lbs)	7.7lbs
Net (kg)	2.4kg
Gross (kg)	3.5kg
Packaging (in.)	14.4x11.8x7.4in
Physical (in.)	11.5x8.7x4.5in
Packaging (mm)	365x300x188mm
Physical (mm)	293x221x115mm
Regulations	cTUVus
Package Contents	Projector, power cable, remote control, Quick Start Guide
Warranty	*Refurbished. 30-day DOA policy for full refund, with a 90-day repair warranty on parts and labor.
Recycle/Disposal	Please dispose of in accordance with local, state or federal laws.

UPC: 766907035421



Contact Sales
ViewSonic.com

888.881.8781
email:
salesinfo@viewsonic.com