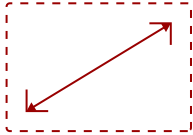
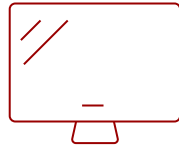


# LS740HD - 5000 LUMENS 1080P LASER PROJECTOR WITH 1.3X OPTICAL ZOOM, H/V KEYSTONE, 4 CORNER ADJUSTMENT, 360 DEGREE ANGLE

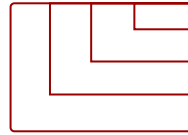
## Key Features



30 - 300 in. / 0.76 - 7.62 m  
**DISPLAY**



**PANEL**



VGA(640 x 480) to WUXGA RB(1920 x 1200)  
**RESOLUTION**



## Product Description

With the ViewSonic® LS740HD laser projector, you can light up every room with brilliant presentations and razor-sharp resolution. Featuring the latest laser phosphor technology, the LS740HD projector delivers 5,000 ANSI lumens of brightness to ensure crisp images even in rooms with ambient lighting. Enjoy a maintenance-free projection experience without having to deal with complicated lamp replacements. This eco-friendly projection solution features a compact design for easier transportation. Experience screen sizes up to 300" in 1080p Full HD resolution for show-stopping images designed to fill up boardrooms, lecture halls, auditoriums and other public spaces. The LS740HD laser projector comes loaded with features like 1.3x optical zoom, H/V keystone, 4 corner adjustment, 360° projection and portrait mode for easy setup and versatile applications.

## Specifications

	More Information
<b>UPC</b>	766907039801
<b>Light Source</b>	Laser
<b>Display Resolution</b>	Full HD (1920x1080)
<b>Display Resolution</b>	1920 x 1080
<b>Brightness (Lumens)</b>	5,000 ANSI
<b>Screen Size</b>	30 - 300 in. / 0.76 - 7.62 m
<b>Throw Distance</b>	1-8m (100"@2.50m)
<b>Throw Ratio</b>	1.13~1.47
<b>Keystone</b>	Vertical (+/- 19°) / Horizontal (+/- 19°)
<b>Lens</b>	1.3x optical zoom
<b>Light Source Life, Normal (hours)</b>	20000
<b>Light Source Life, Dynamic Eco-Mode (hours)</b>	30000


<b>Color Depth</b>	1.07 Billion Colors
<b>Dynamic Contrast Ratio</b>	3,000,000:1
<b>Aspect Ratio</b>	16:9
<b>Input Lag</b>	37ms
<b>Frequency Horizontal</b>	15K-102KHz
<b>Frequency Vertical</b>	24-120Hz
<b>PC Resolution (max)</b>	VGA(640 x 480) to WUXGA RB(1920 x 1200)
<b>Mac® Resolution (max)</b>	480i, 480p, 576i, 576p, 720p, 1080i, 1080p
<b>USB 2.0 Type A</b>	1
<b>3.5mm Audio Out</b>	1
<b>Control (RS232)</b>	1
<b>HDMI 1.4 (with HDCP 1.4)</b>	2
<b>Internal Speakers</b>	15W (x1)
<b>Voltage</b>	100-240V+/- 10%, 50/60Hz AC
<b>Consumption (typical)</b>	210W
<b>Stand-by</b>	Standby: <0.5W
<b>Physical Controls</b>	Keypad, Power key
<b>On Screen Display</b>	Display, Image, Power Management, Basic, Advanced, System, Information (See user guide for full OSD functionality)
<b>Temperature</b>	32-104° F (0 - 40° C)
<b>Kensington Lock Slot</b>	1
<b>Net (lbs)</b>	6.6lbs
<b>Gross (lbs)</b>	10.4lbs
<b>Net (kg)</b>	3.00kg
<b>Gross (kg)</b>	4.70kg
<b>Packaging (in.)</b>	15.7x11x6.1in
<b>Physical (in.)</b>	11.3x8.5x5in
<b>Packaging (mm)</b>	400x280x155mm
<b>Physical (mm)</b>	286x216x129mm
<b>Regulations</b>	cTUVus
<b>Package Contents</b>	Projector, power cable, remote control, Quick Start Guide
<b>Warranty</b>	*Refurbished. 30-day DOA policy for full refund, with a 90-day repair warranty on parts and labor.
<b>Recycle/Disposal</b>	Please dispose of in accordance with local, state or federal laws.

UPC: 766907039801



## Contact Sales

[ViewSonic.com](http://ViewSonic.com)

888.881.8781 

email: [salesinfo@viewsonic.com](mailto:salesinfo@viewsonic.com) 